

Latitude 38 ° 40 '

Longitude 81 ° 15 '

C. W. & C. C. CARPER

A. W. CARPER

W. H. CARPER
200 AC

JOHN CARPER, HRS.

4605
0128W

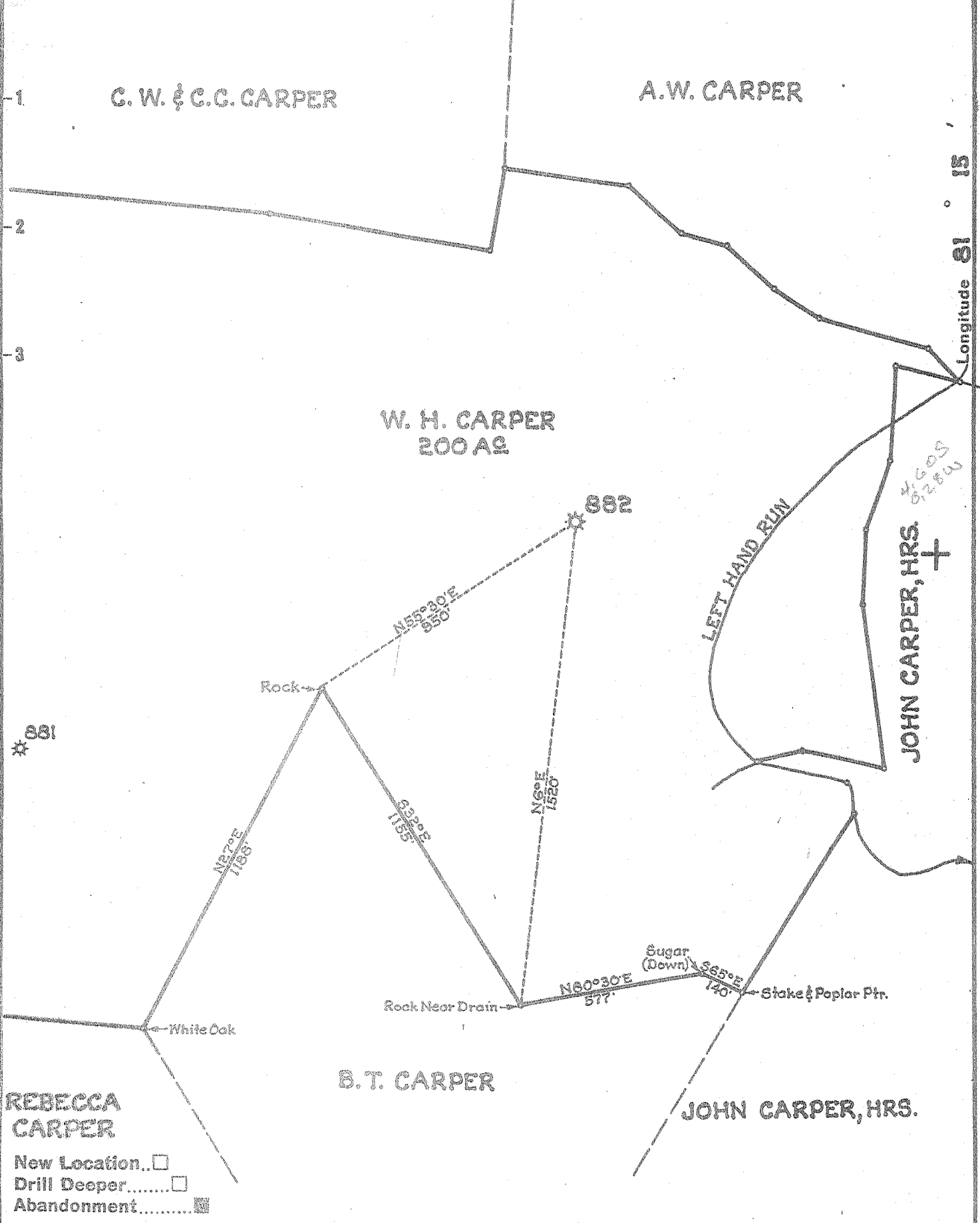
LEFT HAND RUN

JOHN CARPER, HRS.

B. T. CARPER

REBECCA
CARPER

- New Location
- Drill Deeper
- Abandonment



Company	UNITED FUEL GAS CO.
Address	CHARLESTON, W.VA.
Farm	W. H. CARPER
Tract	Acres 200 Lease No. 12024
Well (Farm) No.	Serial No. 882
Elevation (Spirit Level)	849.0'
Quadrangle	WALTON <i>oio</i>
County	ROANE District GEARY
Engineer	<i>Stephen Russell</i>
Engineer's Registration No.	2529
File No.	82-75 Drawing No.
Date	8-4-55 Scale 1"=400'

STATE OF WEST VIRGINIA
DEPARTMENT OF MINES
OIL AND GAS DIVISION
CHARLESTON

WELL LOCATION MAP
FILE NO. ROA-968-A

+ Denotes location of well on United States Topographic Maps, scale 1 to 62,500, latitude and longitude lines being represented by border lines as shown.

- Denotes one inch spaces on border line of original tracing.



STATE OF WEST VIRGINIA
DEPARTMENT OF MINES
OIL AND GAS DIVISION

(Handwritten initials)

WELL RECORD

Oil or Gas Well Gas
(KIND)

Quadrangle Walton
Permit No. 9684
Company UNITED FUEL GAS CO.
Address P.O. Box 1273, Charleston 25, W. Va.
Farm W. H. Carper Acres 200
Location (waters) Left Hand Run
Well No. 882 Elev. 849'
District Geary County Roane
The surface of tract is owned in fee by _____
Address _____
Mineral rights are owned by Traders Trust & Banking Co., Cr. W.H. & Charity Address Spencer, W. Va.
Drilling commenced 4-21-17
Drilling completed 6-2-17
Date Shot _____ From _____ To _____
With _____
Open Flow 16 /10ths Water in _____ Inch
3 /10ths Merc. in _____ Inch
Volume 1,928,880 Cu. Ft.
Rock Pressure 330 lbs. 48 hrs.
Oil _____ bbls., 1st 24 hrs.
Fresh water _____ feet
Salt water _____ feet

Casing and Tubing	Used in Drilling	Left in Well	Packers
Size			
18 20		20'	Kind of Packer <u>Parmaco Anchor</u>
13			
10		20'	
8 1/4	485'		Size of <u>3x5-3/16x16</u>
6 5/8		1680'	Depth set <u>1745'</u>
5 3/16			
3		1888'	Perf. top
2			Perf. bottom
Liners Used			Perf. top
			Perf. bottom

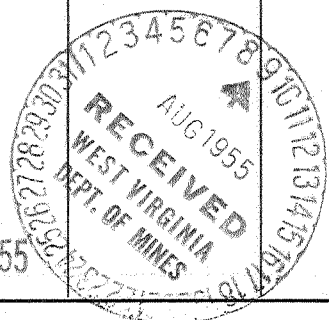
CASING CEMENTED _____ SIZE _____ No. Ft. _____ Date _____

COAL WAS ENCOUNTERED AT 490 FEET 168 INCHES

_____ FEET _____ INCHES FEET _____ INCHES

_____ FEET _____ INCHES FEET _____ INCHES

Formation	Color	Hard or Soft	Top	Bottom	Oil, Gas or Water	Depth Found	Remarks
Slate & Sand			0	470			
Coal			490	500			
Big Dunkard			750	880			
Salt Sand			995	1120			
Salt Sand			1195	1555			
Maxon Sand			1600	1620			
Slate			1620	1635			
Little Lime			1635	1665			
White Lime			1665	1675			
Break			1675	1677			
Big Lime			1677	1773			
Reduced hole			1726				
Gas			1728				
Big Injun Sand			1773	1838			
Gas			1775	1803			
Slate			1838	1875			
Total depth			1875'				



OCT 6 1955

