

Latitude 38° 45'

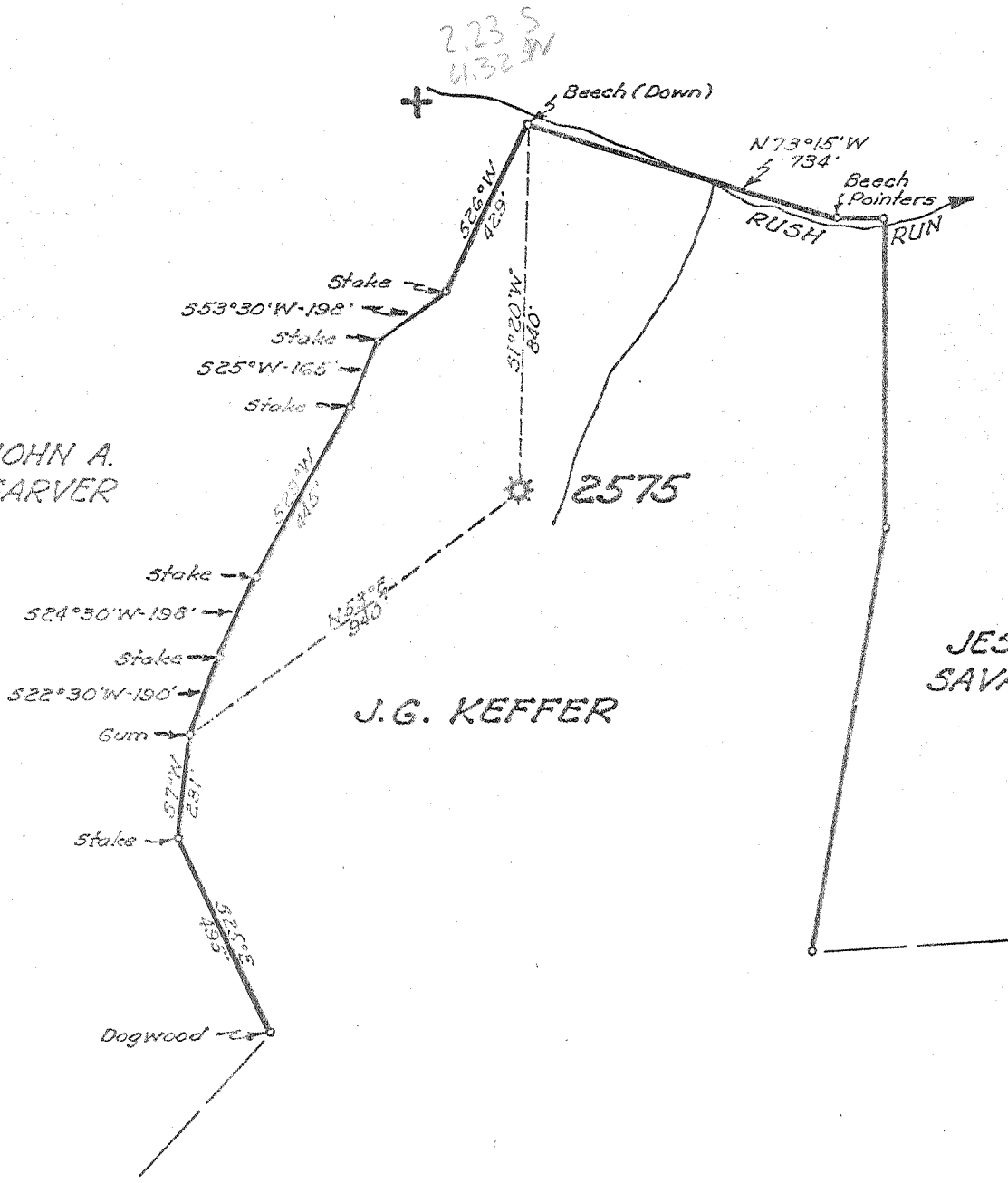
Longitude 81° 10'

J. G. & ALICE KEFFER

JOHN A. SARVER

J. G. KEFFER

JESSE SAVAGE



- New Location
- Drill Deeper
- Abandonment

Company UNITED FUEL GAS CO.  
 Address CHARLESTON, W. VA.  
 Farm J. G. KEFFER  
 Tract \_\_\_\_\_ Acres 182 Lease No. 20062  
 Well (Farm) No. \_\_\_\_\_ Serial No. 2575  
 Elevation (Spirit Level) 780.0'  
 Quadrangle OTTER  
 County ROANE District SMITHFIELD  
 Engineer Richard R. Russell  
 Engineer's Registration No. 2529  
 File No. 82-83 Drawing No. \_\_\_\_\_  
 Date 5-18-55 Scale 1"=400'

STATE OF WEST VIRGINIA  
 DEPARTMENT OF MINES  
 OIL AND GAS DIVISION  
 CHARLESTON

**WELL LOCATION MAP**  
 FILE NO. BOA-947-A

+ Denotes location of well on United States Topographic Maps, scale 1 to 62,500, latitude and longitude lines being represented by border lines as shown.  
 - Denotes one inch spaces on border line of original tracing.



STATE OF WEST VIRGINIA  
DEPARTMENT OF MINES  
OIL AND GAS DIVISION

493

Quadrangle Otter  
Permit No. 947A(3)

WELL RECORD

Oil or Gas Well Gas  
(KIND)

Company UNITED FUEL GAS COMPANY  
Address P.O. Box 1273, Charleston 25, W. Va.  
Farm J. G. Keffer, et al Acres 182  
Location (waters) Rush Run  
Well No. 2575 Elev. 780'  
District Smithfield County Roane  
The surface of tract is owned in fee by \_\_\_\_\_  
Address \_\_\_\_\_  
Mineral rights are owned by L. O. Keffer, et al  
Address Clover, W. Va.  
Drilling commenced 1-26-29  
Drilling completed 3-3-29  
Date Shot 2-28-29 From 1770 To 1777  
With 20 qts.  
Open Flow 7 /10ths Water in 2 Inch  
/10ths Merc. in \_\_\_\_\_ Inch  
Volume 126,240 Cu. Ft.  
Rock Pressure 440 lbs. \_\_\_\_\_ hrs.  
Oil \_\_\_\_\_ bbls., 1st 24 hrs.  
Fresh water \_\_\_\_\_ feet \_\_\_\_\_ feet  
Salt water 1440' feet \_\_\_\_\_ feet

Casing and Tubing	Used in Drilling	Left in Well	Packers
Size			
16			Kind of Packer
13			<u>O.W.S. Anchor</u>
10	<u>118-6</u>		Size of
8 1/4		<u>651-8</u>	<u>5-3/16x3</u>
6 3/4		<u>1672'</u>	Depth set
5 3/16			<u>1611</u>
3		<u>1847-3"</u>	Perf. top
2			Perf. bottom
Liners Used			Perf. top
			Perf. bottom

CASING CEMENTED \_\_\_\_\_ SIZE \_\_\_\_\_ No. Ft. \_\_\_\_\_ Date \_\_\_\_\_

COAL WAS ENCOUNTERED AT \_\_\_\_\_ FEET \_\_\_\_\_ INCHES  
\_\_\_\_\_ FEET \_\_\_\_\_ INCHES \_\_\_\_\_ FEET \_\_\_\_\_ INCHES  
\_\_\_\_\_ FEET \_\_\_\_\_ INCHES \_\_\_\_\_ FEET \_\_\_\_\_ INCHES

Formation	Color	Hard or Soft	Top	Bottom	Oil, Gas or Water	Depth Found	Remarks
Gravel				12			
Sand			12	85			
Blue Slate			85	160			
Sand			160	175			
Red Rock			175	530			
Little Dunkard Sand			530	550			
Red Rock Cave			550	590			
Big Dunkard Sand			590	770			
Slate			770	820			
Sand			820	850			
Slate			850	870			
Sand (Gas)			870	910			
Slate			910	1270			
Salt Sand			1270	1480			
Slate			1480	1535			
Maxon Sand			1535	1595			
Slate			1595	1605			
Little Lime			1605	1643			
Pencil Cave			1643	1655			
Big Lime			1655	1766			
Gas			1756				
Big Injun Sand			1766	1799			
Gas			1771	1777			
Slate & Shells			1799	1845			
Total depth			1845				
Reduced hole			1718'				

RECEIVED  
WEST VIRGINIA  
DEPT. OF MINES  
JUN 17 1955

