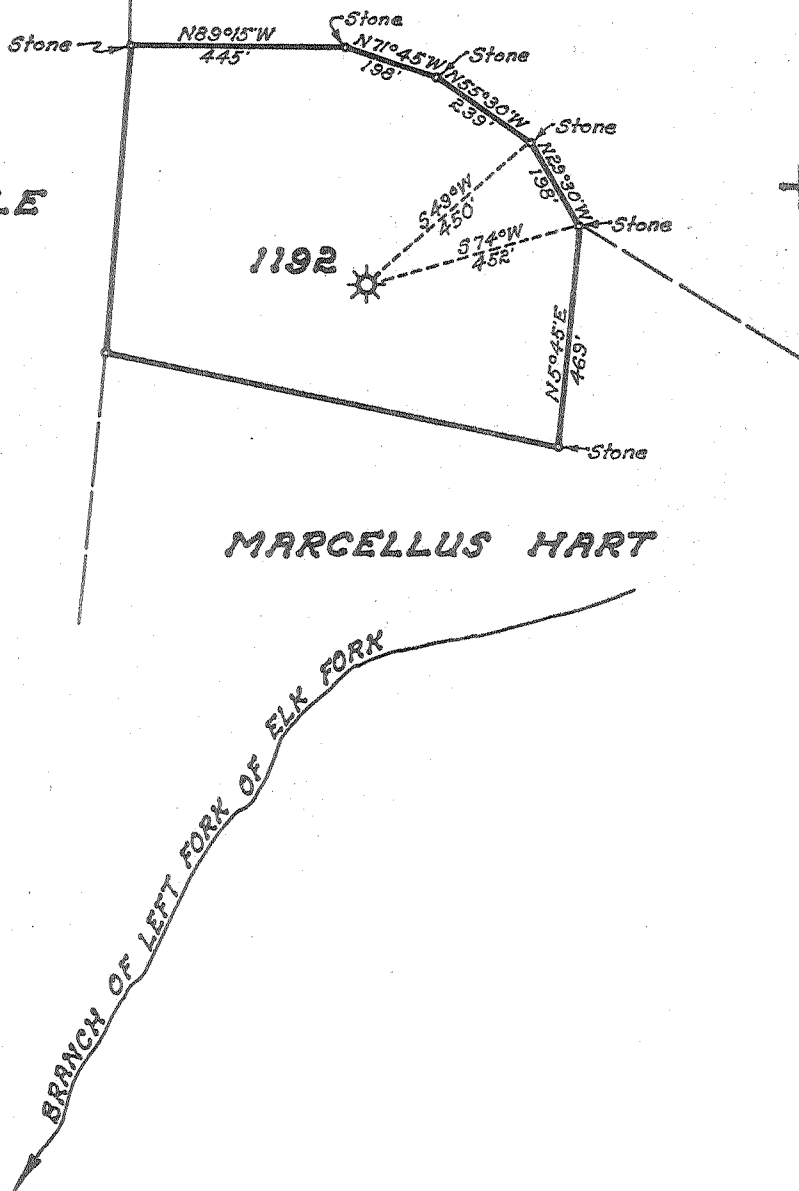


E. G. TUTTLE

F. MATHENY

3.62 5  
1.36 1/2



MARCELLUS HART

- New Location...
- Drill Deeper.....
- Abandonment.....

Company UNITED FUEL GAS CO.  
 Address CHARLESTON, W. VA.  
 Farm M. HART  
 Tract \_\_\_\_\_ Acres 16 Lease No. 1490  
 Well (Farm) No. \_\_\_\_\_ Serial No. 1192  
 Elevation (Spirit Level) 940.0  
 Quadrangle RIPLEY  
 County ROANE District CURTIS  
 Engineer Seybert K. Tuttle  
 Engineer's Registration No. 2529  
 File No. 66-89 Drawing No. \_\_\_\_\_  
 Date 3-11-55 Scale 1" = 400'

STATE OF WEST VIRGINIA  
 DEPARTMENT OF MINES  
 OIL AND GAS DIVISION  
 CHARLESTON

WELL LOCATION MAP  
 FILE NO. ROA-938-A

- + Denotes location of well on United States Topographic Maps, scale 1 to 62,500, latitude and longitude lines being represented by border lines as shown.
- Denotes one inch spaces on border line of original tracing.

MARCELLUS HART NO. 2? (1192) WELL.

Curtis District, Roane County, W. Va.

By United Fuel Gas Co.

On.....acres.

Keller Map G-23.

Elevation.....

Completed Feb. 14, 1921.

Gas well. 20/10 Merc. in 2".

S. P. - S-45 - W-51; on Left Fork of Elk Fork.

From Hec's notes.

5  
/

|                              | Top. | Bottom. |
|------------------------------|------|---------|
| Big Lime                     | 1971 | 2059    |
| Big Injun Sand               | 2059 | 2104    |
| Berea Sand (gas, 2494-2501') | 2487 | 2501    |



STATE OF WEST VIRGINIA  
DEPARTMENT OF MINES  
OIL AND GAS DIVISION

507

Quadrangle Ripley

WELL RECORD

Permit No. 938A

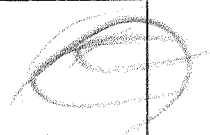
Oil or Gas Well Gas  
(KIND)

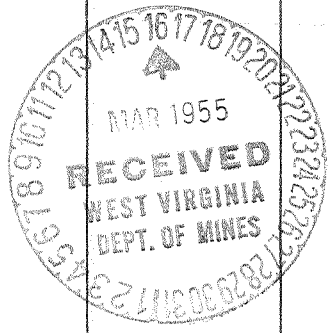
Company UNITED FUEL GAS COMPANY  
Address P.O. Box 1273, Charleston 25, W. Va.  
Farm M. Hart Acres 16  
Location (waters) Elk Fork  
Well No. 1192 Elev. 940'  
District Curtis County Roane  
The surface of tract is owned in fee by \_\_\_\_\_  
Address \_\_\_\_\_  
Mineral rights are owned by Minnie M. Steinbeck  
712 Broadway Ave. Address Parkersburg, W.Va.  
Drilling commenced 12-13-20  
Drilling completed 2-17-21  
Date Shot 2-15-21 From \_\_\_\_\_ To \_\_\_\_\_  
With 20 qts.  
Open Flow \_\_\_\_\_ /10ths Water in \_\_\_\_\_ Inch  
20 /10ths Merc. in 2 Inch  
Volume 786,000 Cu. Ft.  
Rock Pressure 250 lbs. 1 hrs.  
Oil \_\_\_\_\_ bbls., 1st 24 hrs.  
Fresh water \_\_\_\_\_ feet  
Salt water 1812' feet

| Casing and Tubing | Used in Drilling | Left in Well | Packers         |
|-------------------|------------------|--------------|-----------------|
| Size              |                  |              |                 |
| 16                |                  | 16'          | Kind of Packer  |
| 13                |                  |              | <u>Parmaco</u>  |
| 10                | 730'             |              | Size of         |
| 8 3/4             | 1146'            |              | <u>5-3/16x2</u> |
| 6 5/8             |                  | 2116'        | Depth set       |
| 5 3/16            |                  |              | <u>2442'</u>    |
| 3                 |                  |              | Perf. top       |
| 2                 |                  | 2569'        | Perf. bottom    |
| Liners Used       |                  |              | Perf. top       |
|                   |                  |              | Perf. bottom    |

CASING CEMENTED \_\_\_\_\_ SIZE \_\_\_\_\_ No. Ft. \_\_\_\_\_ Date \_\_\_\_\_

COAL WAS ENCOUNTERED AT \_\_\_\_\_ FEET \_\_\_\_\_ INCHES  
\_\_\_\_\_ FEET \_\_\_\_\_ INCHES \_\_\_\_\_ FEET \_\_\_\_\_ INCHES  
\_\_\_\_\_ FEET \_\_\_\_\_ INCHES \_\_\_\_\_ FEET \_\_\_\_\_ INCHES

| Formation           | Color | Hard or Soft | Top   | Bottom | Oil, Gas or Water   | Depth Found | Remarks |
|---------------------|-------|--------------|-------|--------|---|-------------|---------|
| 1st Pittsburgh Sand |       |              | 495   | 555    | <br>Oil at 1740-1800'<br>Water 1812'<br><br>Gas at 2494-2497' |             |         |
| 2nd Pittsburgh Sand |       |              | 660   | 690    |   |             |         |
| Little Dunkard      |       |              | 980   | 1130   |   |             |         |
| Big Dunkard         |       |              | 1140  | 1285   |   |             |         |
| Gas Sand            |       |              | 1285  | 1390   |   |             |         |
| Salt Sand           |       |              | 1685  | 1971   |   |             |         |
| Big Lime            |       |              | 1971  | 2059   |   |             |         |
| Injun               |       |              | 2059  | 2104   |   |             |         |
| Berea               |       |              | 2487  | 2499   |   |             |         |
| Total depth         |       |              | 2544' |        |   |             |         |



AUG 12 1955

