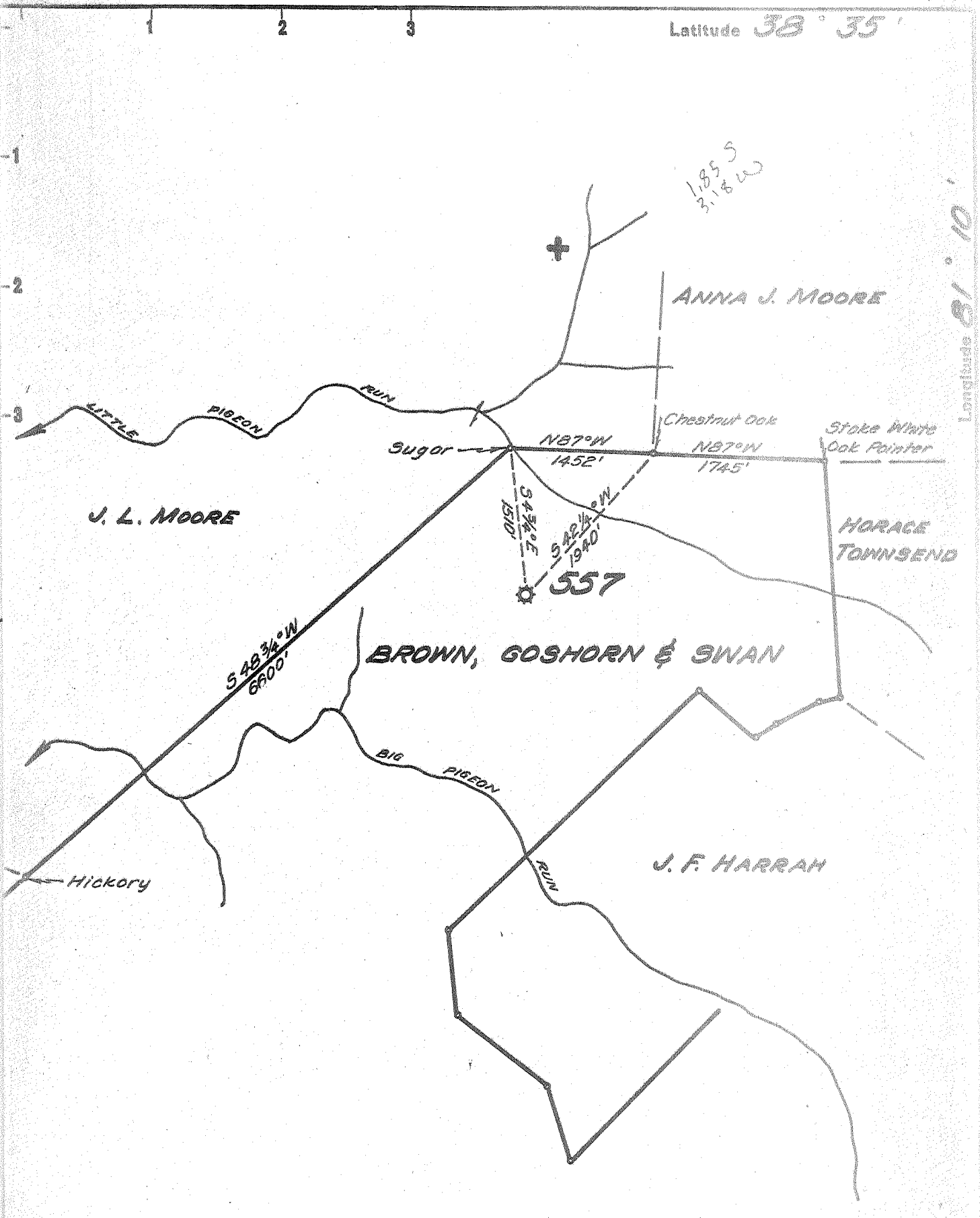


Latitude 38° 35'

Longitude 81° 10'



New Location..
 Drill Deeper.....
 Abandonment.....

Company UNITED FUEL GAS CO.
 Address CHARLESTON, W. VA.
 Farm BROWN, GOSHORN & SWAN
 Tract _____ Acres 2000 Lease No. 15532
 Well (Farm) No. _____ Serial No. 557
 Elevation (Spirit Level) 1044.57
 Quadrangle OTTER
 County ROANE District GEARY
 Engineer Paul E. J. J. J.
 Engineer's Registration No. 669
 File No. 82-73 Drawing No. _____
 Date 1-3-55 Scale 1" = 1320'

STATE OF WEST VIRGINIA
 DEPARTMENT OF MINES
 OIL AND GAS DIVISION
 CHARLESTON

WELL LOCATION MAP
 FILE NO. ROA-912-A

+ Denotes location of well on United States Topographic Maps, scale 1 to 62,500, latitude and longitude lines being represented by border lines as shown.
 - Denotes one inch spaces on border line of original tracing.



STATE OF WEST VIRGINIA
DEPARTMENT OF MINES
OIL AND GAS DIVISION

486

Quadrangle Otter
Permit No. 912-A

WELL RECORD

Oil or Gas Well Gas
(KIND)

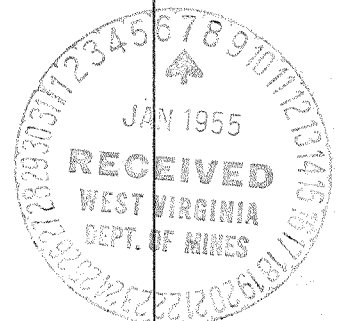
Company UNITED FUEL GAS CO.
Address P.O. Box 1273, Charleston 25, W. Va.
Farm Brown, Goshorn & Swan Acres 2000
Location (waters) Little Pigeon Run
Well No. 557 Elev. 1044.57'
District Geary County Roane
The surface of tract is owned in fee by _____
Address _____
Mineral rights are owned by James F. Brown III Trustee, et al - Box 88
Address Charleston, W. Va.
Drilling commenced 8-25-13
Drilling completed 10-31-13
Date Shot 11-3-13 From 1810 To 1820
With 15 qts.
Open Flow 6 /10ths Water in 2 Inch
/10ths Merc. in _____ Inch
Volume 115,968 Cu. Ft.
Rock Pressure 445 lbs. _____ hrs.
Oil _____ bbls., 1st 24 hrs.
Fresh water _____ feet _____ feet
Salt water _____ feet _____ feet

| Casing and Tubing | Used in Drilling | Left in Well | Packers |
|-------------------|------------------|----------------|-----------------------------------|
| Size | | 16' | Kind of Packer <u>Callanan</u> |
| 16 | | | |
| 13 | | | |
| 10 | | | Size of <u>2x6-5/8x16</u> |
| 8 1/4 | <u>775'</u> | | Depth set <u>2752</u> |
| 6 1/2 | | <u>1700'</u> | |
| 5 3/16 | | | Perf. top |
| 3 | | | Perf. bottom |
| 2 | | <u>1916'6"</u> | Perf. top |
| Liners Used | | | Perf. bottom |

CASING CEMENTED _____ SIZE _____ No. Ft. _____ Date _____

COAL WAS ENCOUNTERED AT _____ FEET _____ INCHES
_____ FEET _____ INCHES _____ FEET _____ INCHES
_____ FEET _____ INCHES _____ FEET _____ INCHES

| Formation | Color | Hard or Soft | Top | Bottom | Oil, Gas or Water | Depth Found | Remarks |
|---------------------|-------|--------------|-------|--------|-------------------|-------------|----------------------------|
| Red Rock | | | 0 | 40 | | | |
| Sand | | | 40 | 65 | | | |
| Red Rock | | | 65 | 140 | | | |
| Sand | | | 140 | 165 | | | |
| Blue Rock | | | 165 | 240 | | | |
| Sand | | | 240 | 400 | | | |
| Slate | | | 400 | 450 | | | |
| Lime | | | 450 | 500 | | | |
| Little Dunkard Sand | | | 500 | 555 | | | |
| Black Slate | | | 555 | 565 | | | |
| Big Dunkard Sand | | | 565 | 655 | | | Gas in Big Line 1767-1772' |
| Black Slate | | | 655 | 685 | | | Gas in Injun 1810-1815' |
| Sand | | | 685 | 745 | | | |
| Slate & Shells | | | 745 | 873 | | | |
| Sand | | | 875 | 1015 | | | |
| Black Slate | | | 1015 | 1025 | | | |
| Slate & Lime Shells | | | 1025 | 1080 | | | |
| Sand | | | 1080 | 1120 | | | |
| Black Slate | | | 1120 | 1125 | | | |
| Lime | | | 1125 | 1135 | | | |
| Gas Sand | | | 1135 | 1170 | | | |
| Black Slate | | | 1170 | 1200 | | | |
| 1st Salt Sand | | | 1200 | 1320 | | | |
| Slate | | | 1320 | 1365 | | | |
| 2nd Salt Sand | | | 1365 | 1590 | | | |
| Maxon Sand | | | 1590 | 1640 | | | |
| Little Lime | | | 1640 | 1668 | | | |
| Pencil Cave | | | 1668 | 1687 | | | |
| Big Lime | | | 1687 | 1777 | | | |
| Keener Sand | | | 1777 | 1810 | | | |
| Injun Sand | | | 1810 | 1845 | | | |
| Slate & Shells | | | 1845 | 2965 | | | |
| Total depth | | | 2965' | | | | |



JUN 17 1955

