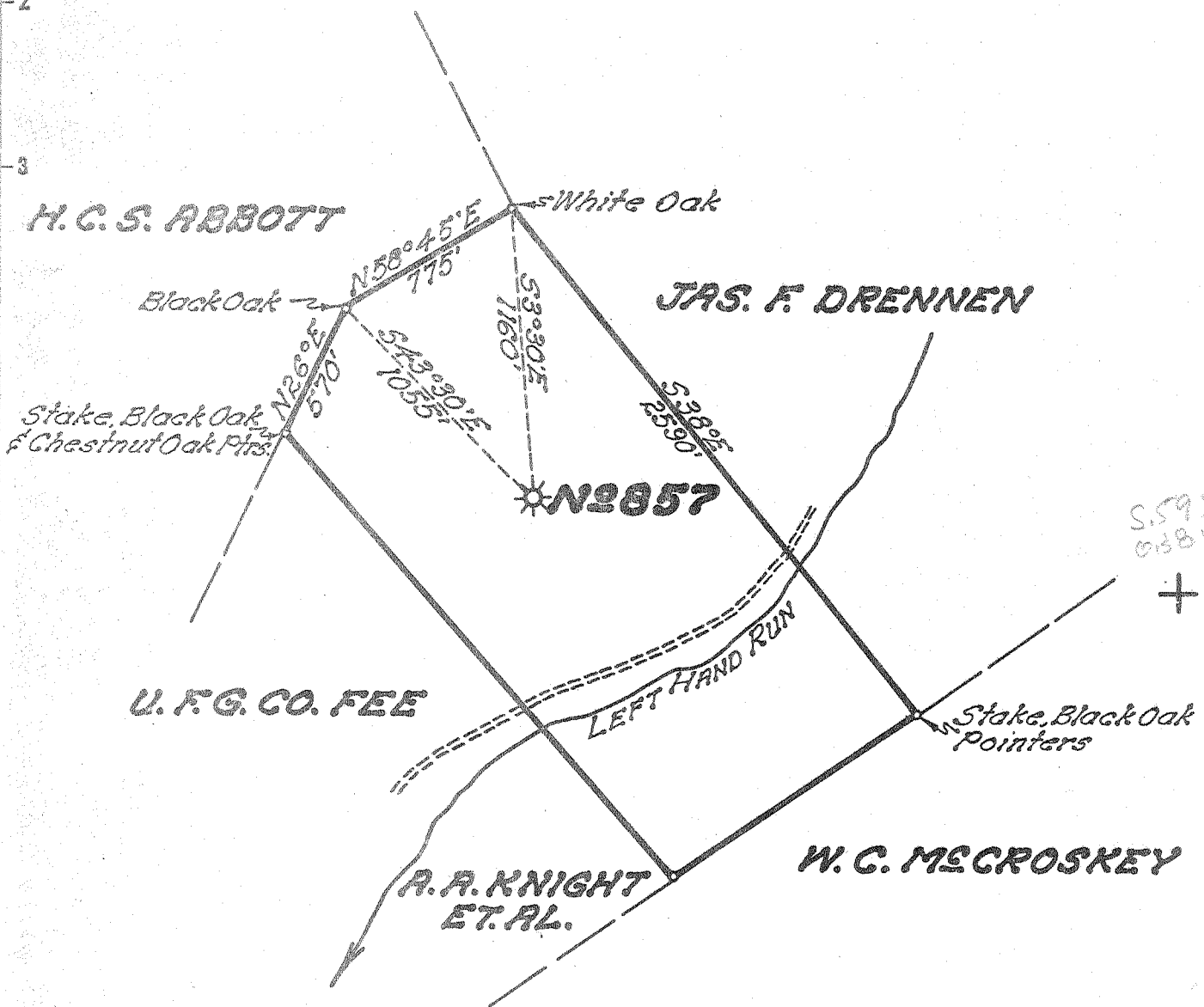


Latitude 38° 40'

Longitude 81° 15'



New Location
 Drill Deeper
 Abandonment

Company UNITED FUEL GAS CO.
 Address CHARLESTON, W. VA.
 Farm U. G. COOK
 Tract _____ Acres 50 Lease No. 8693
 Well (Farm) No. _____ Serial No. 857
 Elevation (Spirit Level) 821.0
 Quadrangle WALTON
 County ROANE District GEARY
 Engineer Seybert R. Jewell
 Engineer's Registration No. 2529
 File No. 82-75 Drawing No. _____
 Date 11-9-54 Scale 1" = 660'

STATE OF WEST VIRGINIA
 DEPARTMENT OF MINES
 OIL AND GAS DIVISION
 CHARLESTON

See microfilm for Well Record
WELL LOCATION MAP
 FILE NO. ROA-898-A

+ Denotes location of well on United States Topographic Maps, scale 1 to 62,500, latitude and longitude lines being represented by border lines as shown.

- Denotes one inch spaces on border line of original tracing.