

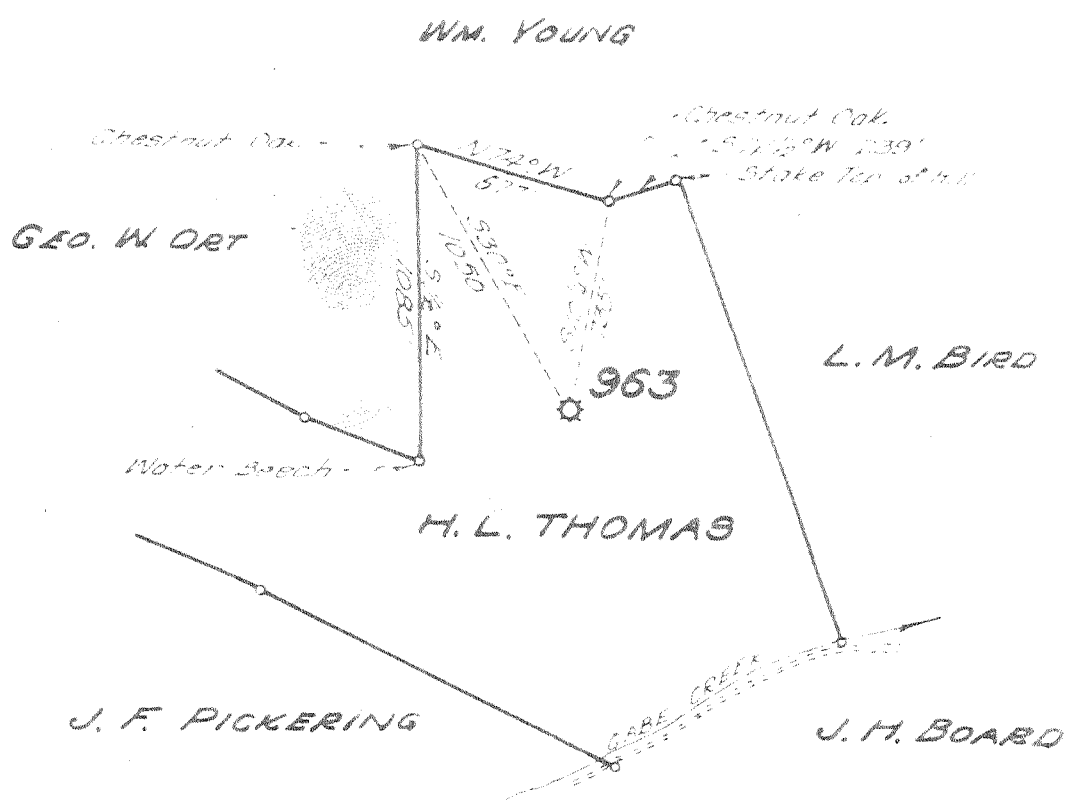
1 2 3

Latitude 38 35'

1
2
3

Longitude 81 20'

2.61 S
+ 1.25 W



New Location
 Drill Deeper
 Abandonment

Company **UNITED FUEL GAS CO.**
 Address **CHARLESTON, W. VA.**
 Farm **H. L. THOMAS**
 Tract _____ Acres **64** Lease No. **6611**
 Well (Farm) No. _____ Serial No. **963**
 Elevation (Spirit Level) **877.90.**
 Quadrangle **WALTON SC**
 County **ROANE** District **WALTON**
 Engineer **Seybert R. Full**
 Engineer's Registration No. **2529**
 File No. **76-71** Drawing No. _____
 Date **10-8-54** Scale **1"=660'**

STATE OF WEST VIRGINIA
 DEPARTMENT OF MINES
 OIL AND GAS DIVISION
 CHARLESTON
 See microfilm for well record
WELL LOCATION MAP
 FILE NO. **ROA-885-A**

+ Denotes location of well on United States Topographic Maps, scale 1 to 62,500, latitude and longitude lines being represented by border lines as shown.
 - Denotes one inch spaces on border line of original tracing.