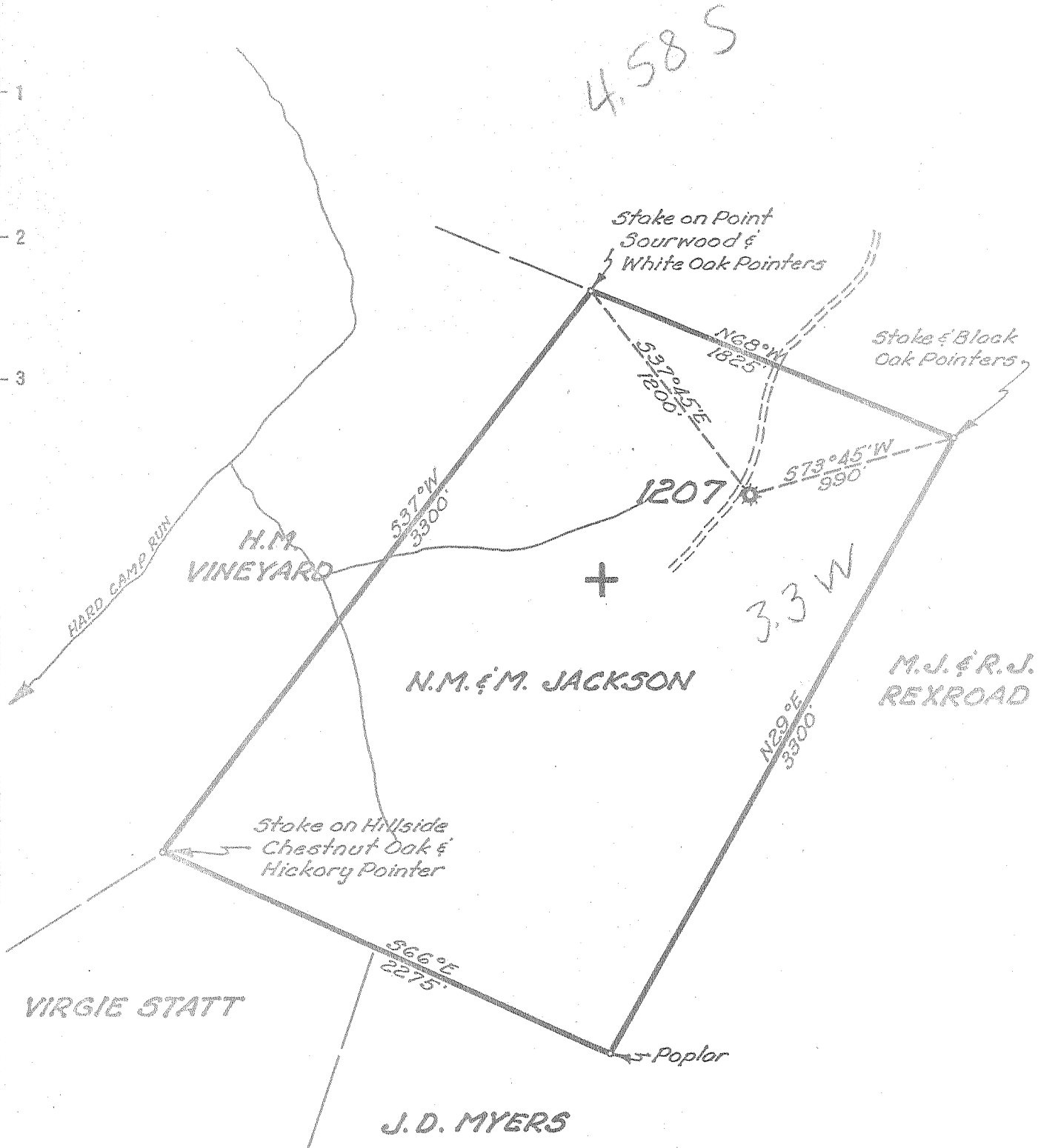


Latitude 38° 40'

Longitude 81° 15'



- New Location
- Drill Deeper
- Abandonment

Company UNITED FUEL GAS CO.
 Address CHARLESTON, W.VA.
 Farm N.M. & M. JACKSON
 Tract _____ Acres 150 Lease No. 12146
 Well (Farm) No. _____ Serial No. 1207
 Elevation (Spirit Level) 1189.0'
 Quadrangle WALTON EC *clia*
 County ROANE District WALTON
 Engineer Paul E. ...
 Engineer's Registration No. 669
 File No. 78-75 Drawing No. _____
 Date 9-24-54 Scale 1"=660'

STATE OF WEST VIRGINIA
 DEPARTMENT OF MINES
 OIL AND GAS DIVISION
 CHARLESTON

See microfilm for well record
WELL LOCATION MAP
 FILE NO. ROA-880-A

+ Denotes location of well on United States Topographic Maps, scale 1 to 62,500, latitude and longitude lines being represented by border lines as shown.

- Denotes one inch space on border line of original tracing.