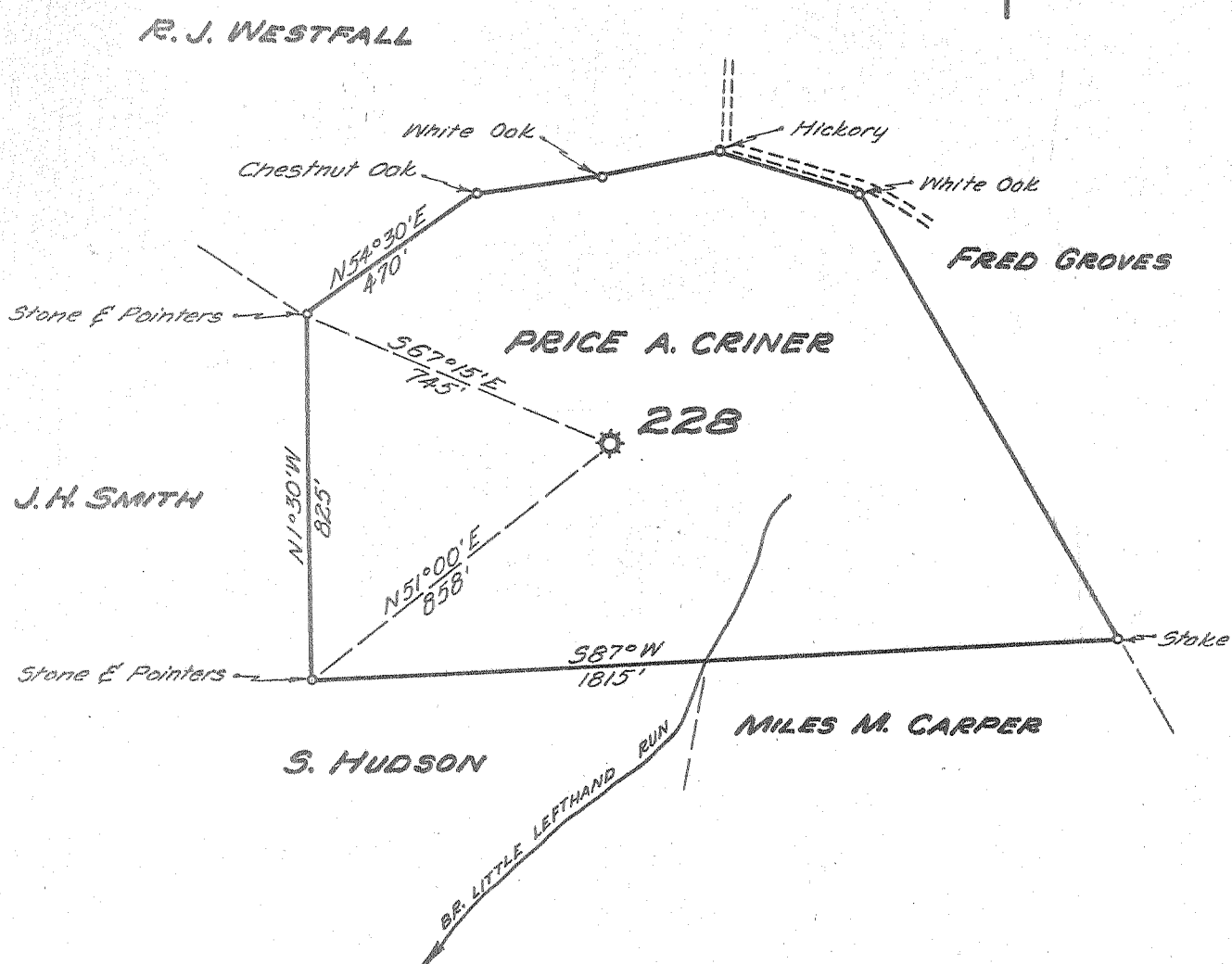


Latitude $38^{\circ} 40'$

Longitude $81^{\circ} 15'$



- New Location
- Drill Deeper
- Abandonment

Company UNITED FUEL GAS CO.
 Address CHARLESTON, W. VA.
 Farm PRICE A. CRINER
 Tract _____ Acres 40 Lease No. 5485
 Well (Farm) No. 1 Serial No. 228
 Elevation (Spirit Level) 1096.0'
 Quadrangle WALTON
 County ROANE District GEARY
 Engineer Seybert R. Farrell
 Engineer's Registration No. 2529
 File No. 80-77 Drawing No. _____
 Date 8-19-54 Scale 1"=400'

STATE OF WEST VIRGINIA
 DEPARTMENT OF MINES
 OIL AND GAS DIVISION
 CHARLESTON
See microfilm for Well Record
WELL LOCATION MAP
 FILE NO. ROA-872-A

+ Denotes location of well on United States Topographic Maps, scale 1 to 62,500, latitude and longitude lines being represented by border lines as shown.

- Denotes one inch spaces on border line of original tracing.

Geary District, Roane County, W. Va.

South Penn Oil Co.

On head of Little Lefthand Run of Sandy Creek, 3/4 mi. N. E.
of Rester.

Elevation, 1100' B.

	Top.	Bottom.
Sand (Sewickley)	37	50
Red rock	500	550
Lime	550	650
Sand (Gas Sand?) (Big Dunkard)	650	680
Slate	680	715
Sand (Second Cow Run?) (Gas or Bg. Spgs.)	715	770
Slate	770	855
Sand	855	895
Slate	895	1025
Salt Sand	1025	1110
Slate	1110	1175
Sand	1175	1225
Slate	1225	1415
Salt Sand (oil. 1495-1510')	1415	1725
Slate and red rock	1725	1765
Warton Sand	1765	1780
Little Lime	1780	1825
Pencil Cove	1825	1840
Big Lime (gas. 1936')	1840	1954
Big Injun Sand (gas. 1960')	1954	1983
Slate and shells, to bottom	1983	2501