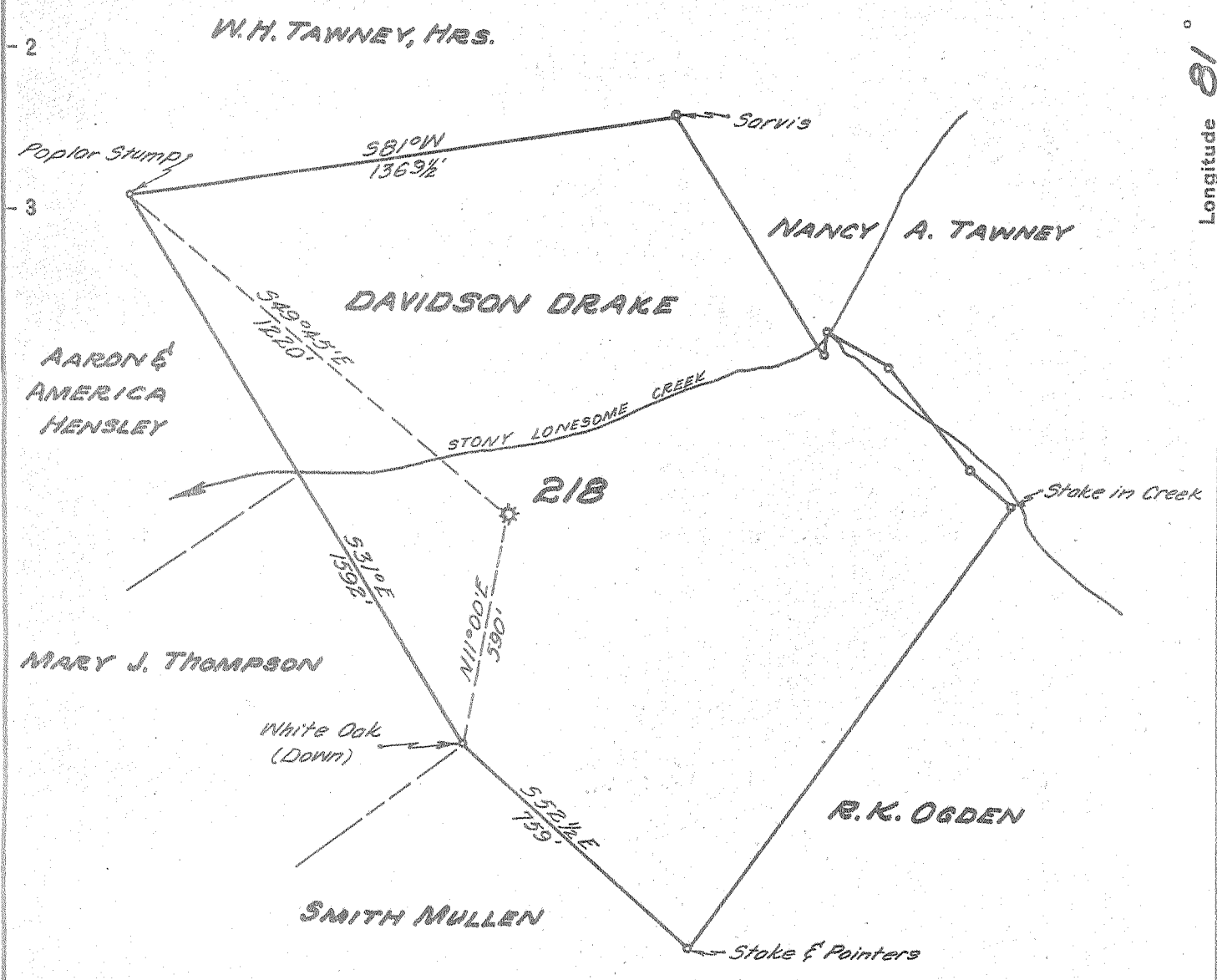


Latitude $38^{\circ} 35'$

+ 0.68 S
1.90 W

Longitude $81^{\circ} 10'$



New Location
 Drill Deeper
 Abandonment

Company UNITED FUEL GAS CO.
 Address CHARLESTON, W.VA
 Farm DAVIDSON DRAKE
 Tract _____ Acres 51 Lease No. 5483
 Well (Farm) No. 1 Serial No. 218
 Elevation (Spirit Level) 728.0'
 Quadrangle OTTER
 County ROANE District GEARY
 Engineer Seibert Shull
 Engineer's Registration No. 2529
 File No. 84-75 Drawing No. _____
 Date 8-18-54 Scale 1"=400'

STATE OF WEST VIRGINIA
 DEPARTMENT OF MINES
 OIL AND GAS DIVISION
 CHARLESTON

WELL LOCATION MAP

FILE NO. ROA-871-A

see microfilm for well Record

+ Denotes location of well on United States Topographic Maps, scale 1 to 62,500, latitude and longitude lines being represented by border lines as shown.

- Denotes one inch spaces on border line of original tracing.