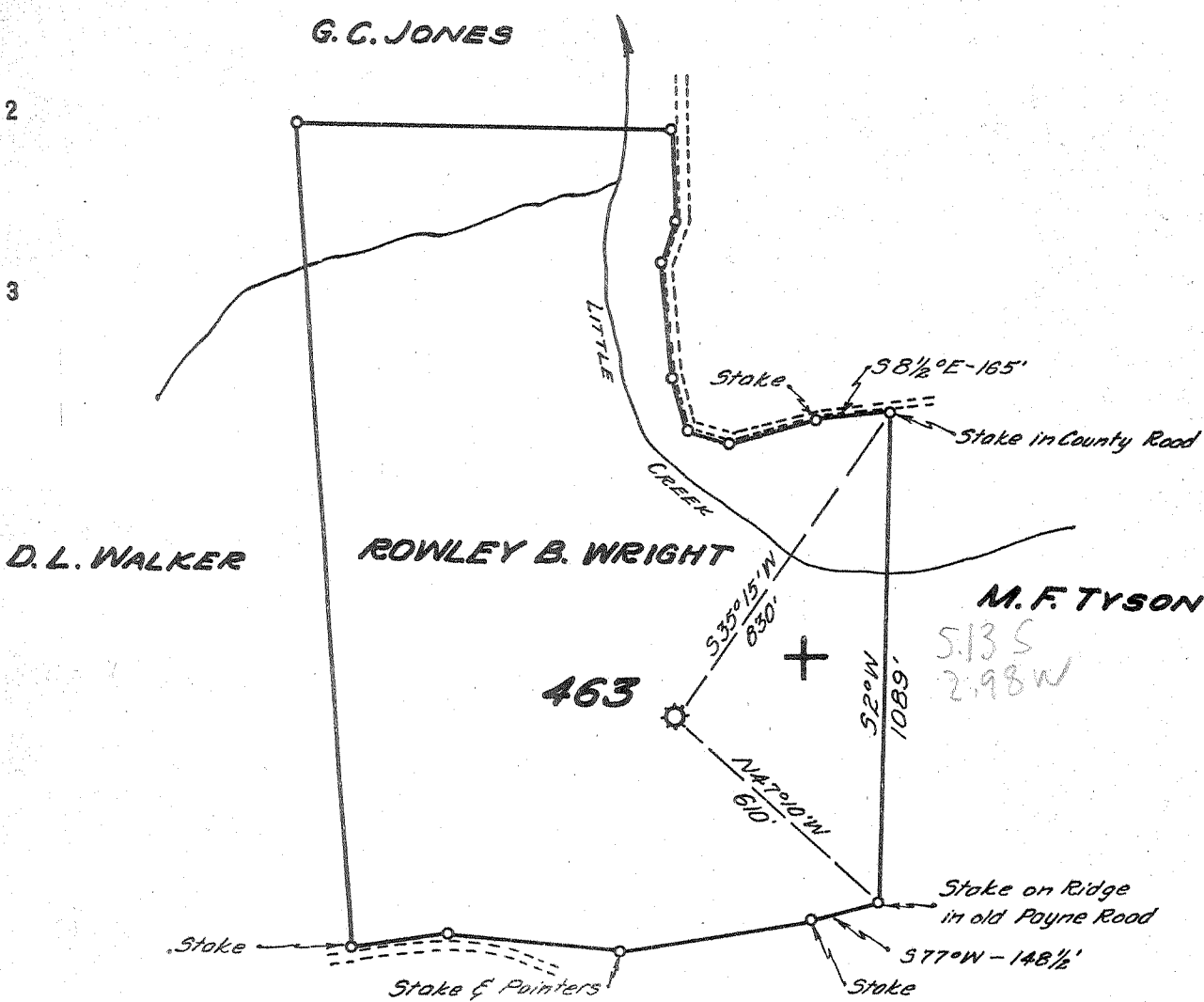


Latitude  $38^{\circ} 55'$

Longitude  $81^{\circ} 15'$



New Location   
 Drill Deeper   
 Abandonment

Company UNITED FUEL GAS CO.  
 Address CHARLESTON, W.VA.  
 Farm ROWLEY B. WRIGHT  
 Tract \_\_\_\_\_ Acres 110 Lease No. 10452  
 Well (Farm) No. 1 Serial No. 463  
 Elevation (Spirit Level) 889.0'  
 Quadrangle SPENCER  
 County ROANE District SPENCER  
 Engineer Stephen R. Howell  
 Engineer's Registration No. 2529  
 File No. 78-93 Drawing No. \_\_\_\_\_  
 Date 8-18-54 Scale 1"=400'

STATE OF WEST VIRGINIA  
 DEPARTMENT OF MINES  
 OIL AND GAS DIVISION  
 CHARLESTON  
*see microfilm for well record*  
**WELL LOCATION MAP**  
 FILE NO. ROA-870-A

+ Denotes location of well on United States Topographic Maps, scale 1 to 62,500, latitude and longitude lines being represented by border lines as shown.  
 - Denotes one inch spaces on border line of original tracing.

R. B. WRIGHT NO. 1 (463) WELL.

Spencer District, Roane County, W. Va.  
By South Penn Oil Co.  
On 94-9/16 acres.  
Keller Map I-22.  
Elevation.....  
Completed.....  
Gas well. Berea dry.

NOS. 2 and 3, Big Injun oil wells. Check for Berea test.