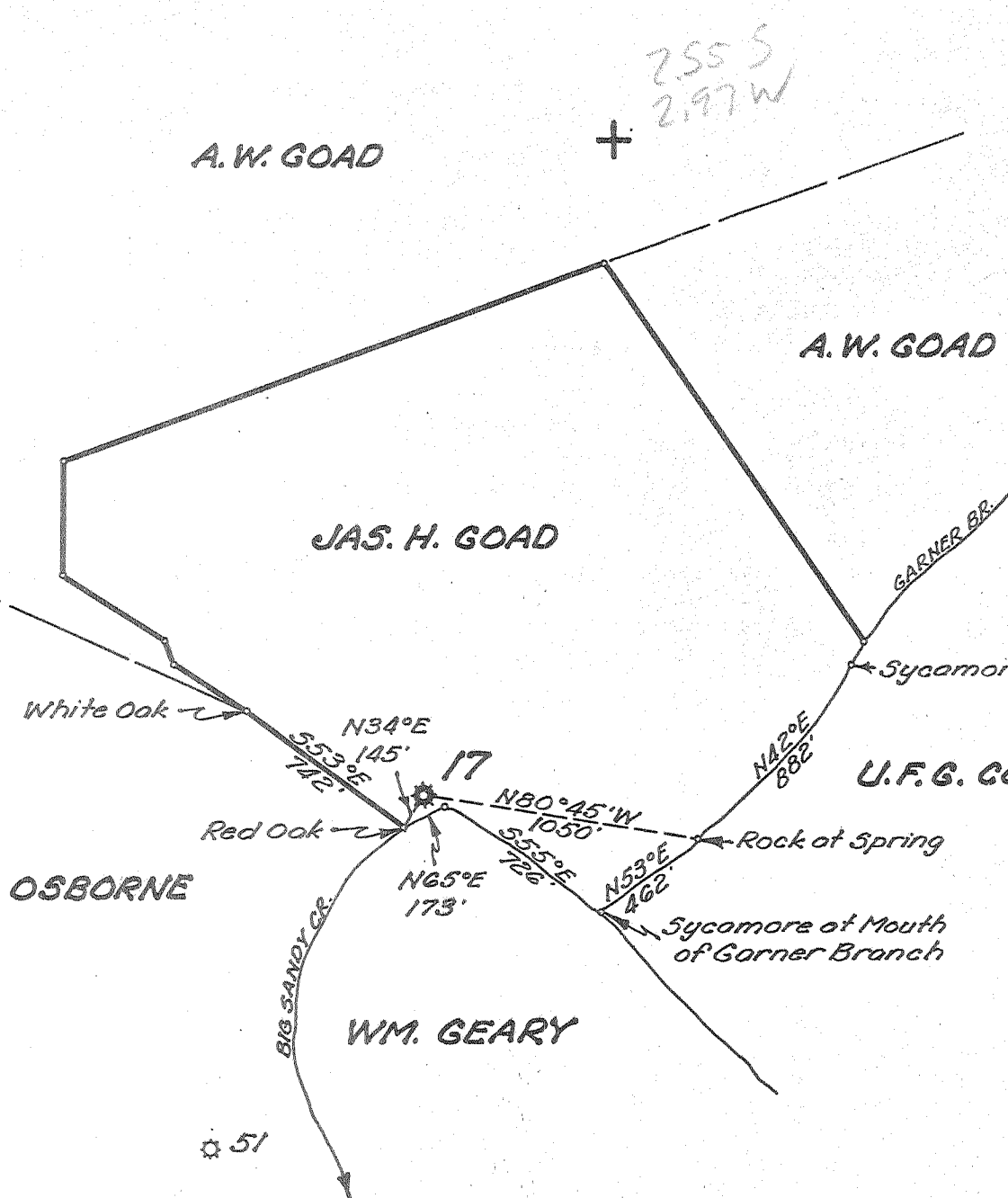


Latitude 38° 35'

Longitude 81° 15'

1
2
3



- New Location
- Drill Deeper
- Abandonment

Company UNITED FUEL GAS CO.
 Address CHARLESTON, W. VA.
 Farm JAS. H. GOAD
 Tract _____ Acres 100 Lease No. 2233
 Well (Farm) No. _____ Serial No. 17
 Elevation (Spirit Level) 638.38'
 Quadrangle WALTON
 County ROANE District GEARY
 Engineer Hubert R. Howell
 Engineer's Registration No. 2529
 File No. 78-71 Drawing No. _____
 Date 7-29-54 Scale 1"=660'

STATE OF WEST VIRGINIA
 DEPARTMENT OF MINES
 OIL AND GAS DIVISION
 CHARLESTON

See microfiche for well record

WELL LOCATION MAP

FILE NO. ROA-868-A

+ Denotes location of well on United States Topographic Maps, scale 1 to 62,500, latitude and longitude lines being represented by border lines as shown.

- Denotes one inch spaces on border line of original tracing.