

1 2 3

Latitude $38^{\circ} 40'$

Longitude $81^{\circ} 10'$

MARTIN SMITH

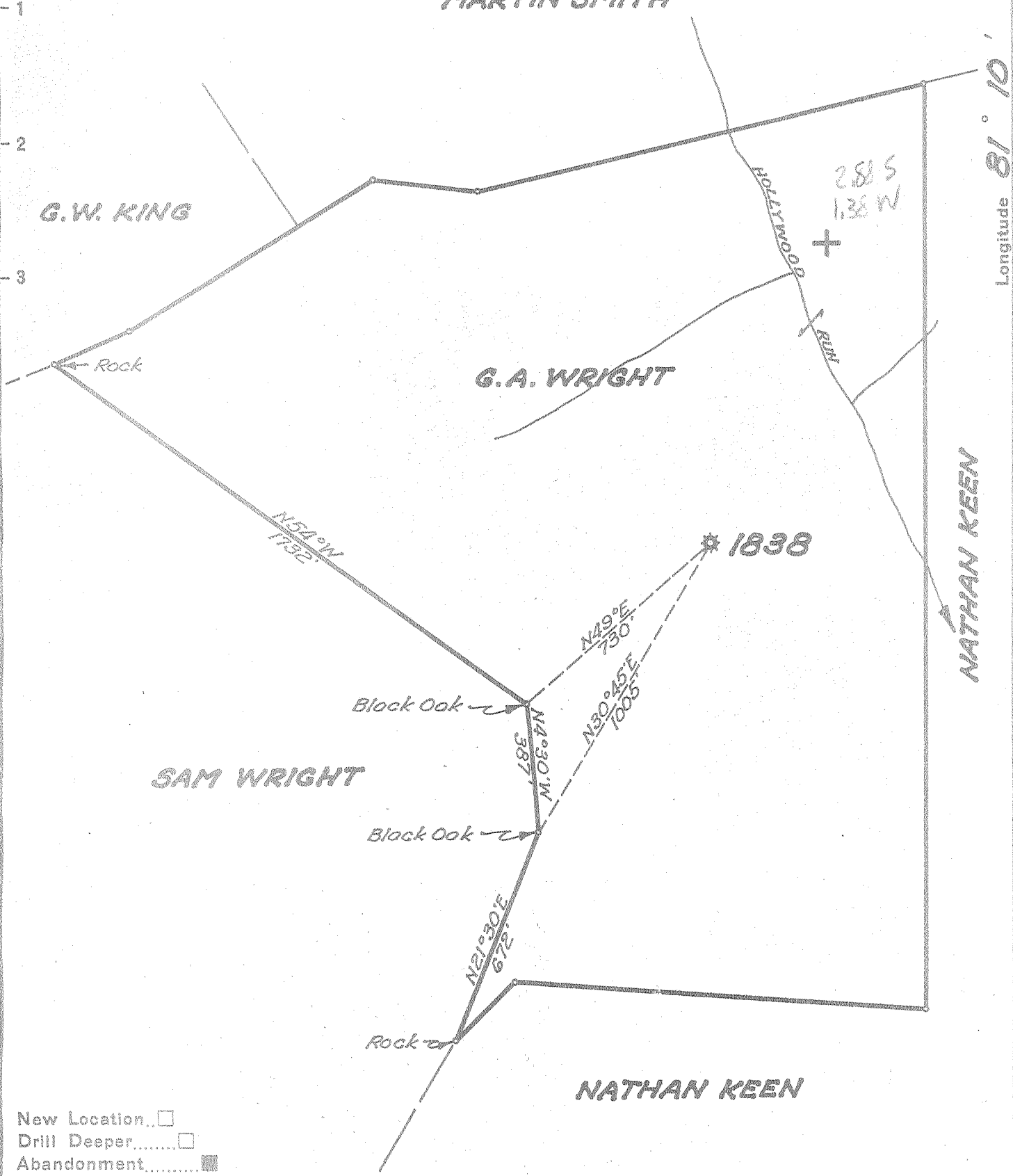
G.W. KING

G.A. WRIGHT

SAM WRIGHT

NATHAN KEEN

NATHAN KEEN



- New Location
- Drill Deeper
- Abandonment

Company UNITED FUEL GAS CO.
 Address CHARLESTON, W. VA.
 Farm G.A. WRIGHT
 Tract _____ Acres 111 Lease No. 19578
 Well (Farm) No. _____ Serial No. 1838
 Elevation (Spirit Level) 875.0'
 Quadrangle OTTER
 County ROANE District GEARY
 Engineer Seibert R. Howell
 Engineer's Registration No. 2529
 File No. 84-77 Drawing No. _____
 Date 7-26-54 Scale 1"=400'

STATE OF WEST VIRGINIA
 DEPARTMENT OF MINES
 OIL AND GAS DIVISION
 CHARLESTON

See microfilm for well Record

WELL LOCATION MAP

FILE NO. ROA-863-A

- + Denotes location of well on United States Topographic Maps, scale 1 to 62,500, latitude and longitude lines being represented by border lines as shown.
- Denotes one inch spaces on border line of original tracing.