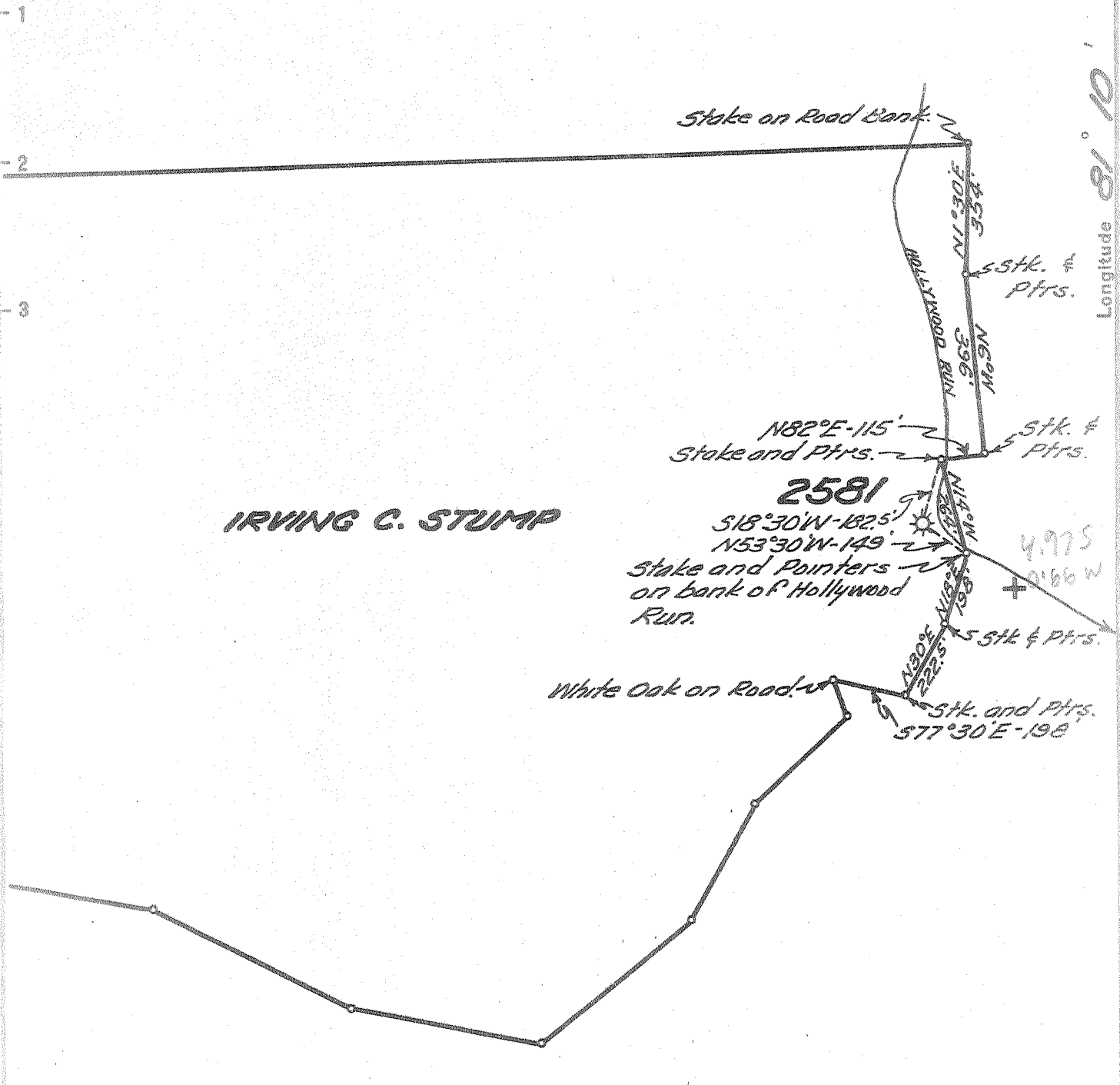


Latitude 38° 40'

IRVING C. STUMP

Longitude 81° 10'



IRVING C. STUMP

W. A. NOE

New Location
 Drill Deeper
 Abandonment

Company UNITED FUEL GAS CO.
 Address CHARLESTON, W. VA.
 Farm IRVING C. STUMP
 Tract _____ Acres 150 Lease No. 19737
 Well (Farm) No. _____ Serial No. 2581
 Elevation (Spirit Level) 720.00'
 Quadrangle OTTER
 County ROANE District GEARY
 Engineer Seybert R. Herrell
 Engineer's Registration No. 2529
 File No. 86-75 Drawing No. _____
 Date 7-2-54 Scale 1" = 400'

STATE OF WEST VIRGINIA
 DEPARTMENT OF MINES
 OIL AND GAS DIVISION
 CHARLESTON

see microfilm for well Record
WELL LOCATION MAP
 FILE NO. ROA-853-A

+ Denotes location of well on United States Topographic Maps, scale 1 to 62,500, latitude and longitude lines being represented by border lines as shown.

- Denotes one inch spaces on border line of original tracing.