

Latitude 38° 55'

Longitude 81° 15'

FIELDON WALKER

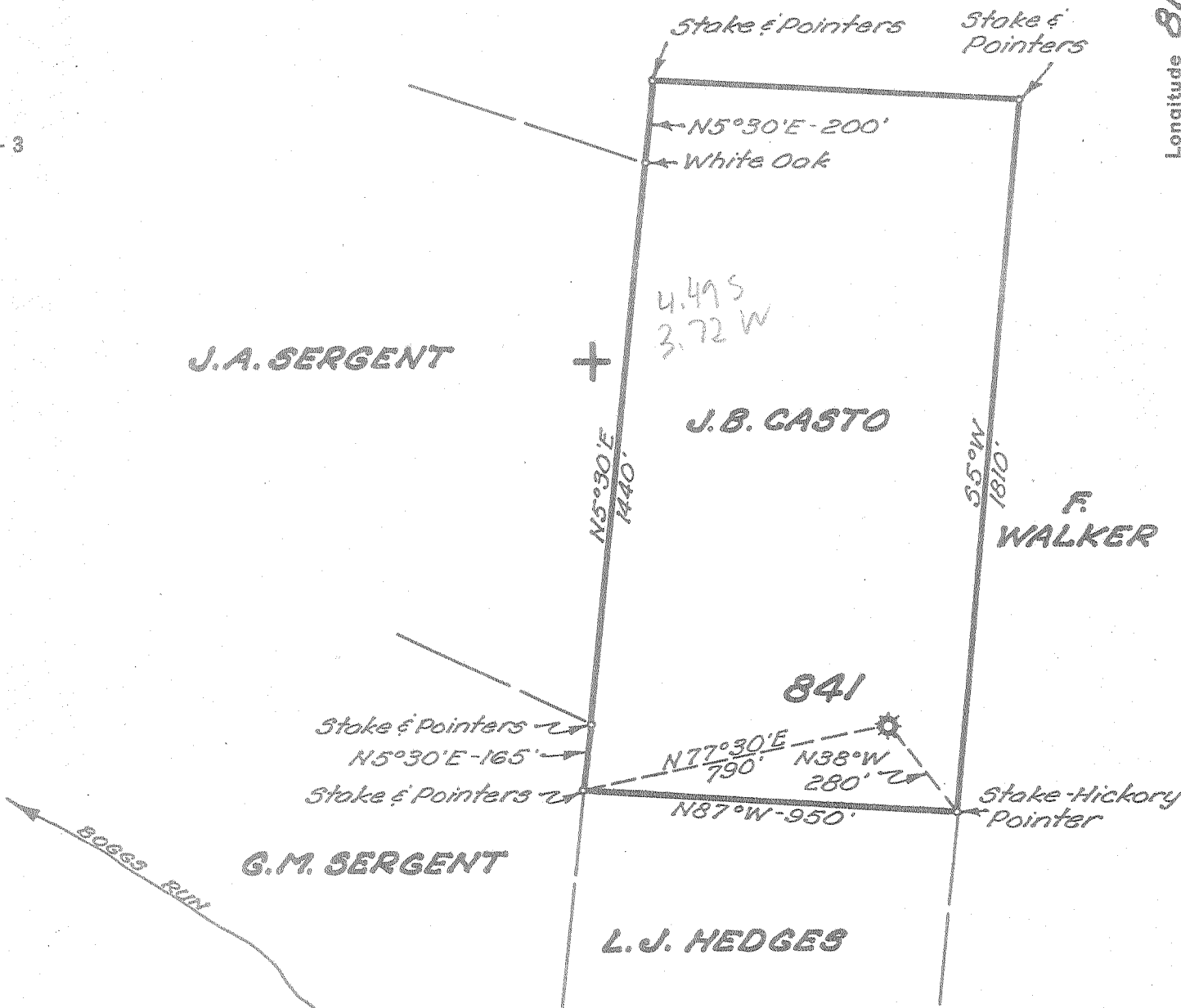
J.A. SERGENT

J.B. CASTO

F. WALKER

G.M. SERGENT

L.J. HEDGES



New Location

Drill Deeper

Abandonment

Company UNITED FUEL GAS CO.

Address CHARLESTON, W. VA.

Farm J. B. CASTO

Tract \_\_\_\_\_ Acres 54 Lease No. 13678

Well (Farm) No. \_\_\_\_\_ Serial No. 841

Elevation (Spirit Level) 978.0'

Quadrangle SPENCER

County ROANE District SPENCER

Engineer Joseph R. Ferrell

Engineer's Registration No. 2529

File No. 78-93 Drawing No. \_\_\_\_\_

Date 6-25-54 Scale 1"=400'

STATE OF WEST VIRGINIA  
DEPARTMENT OF MINES  
OIL AND GAS DIVISION  
CHARLESTON

see microfilm for well Record  
**WELL LOCATION MAP**  
FILE NO. ROA-842-A

+ Denotes location of well on United States Topographic Maps, scale 1 to 62,500, latitude and longitude lines being represented by border lines as shown.

- Denotes one inch spaces on border line of original tracing.

J. B. CASTO NO. 1 WELL.

Spencer District, Boone County, W. Va.  
By United Fuel Gas Co.,  
on 37 acres.  
Keller Map I-22.  
Elevation.....  
Completed Nov. 14, 1916.  
Gas well. 3,700,000 cu. ft.  
From Heck's notes.

70061

now 30842

Boone Sand  
Total depth

Top. Bottom.  
2522 - 2550  
2554