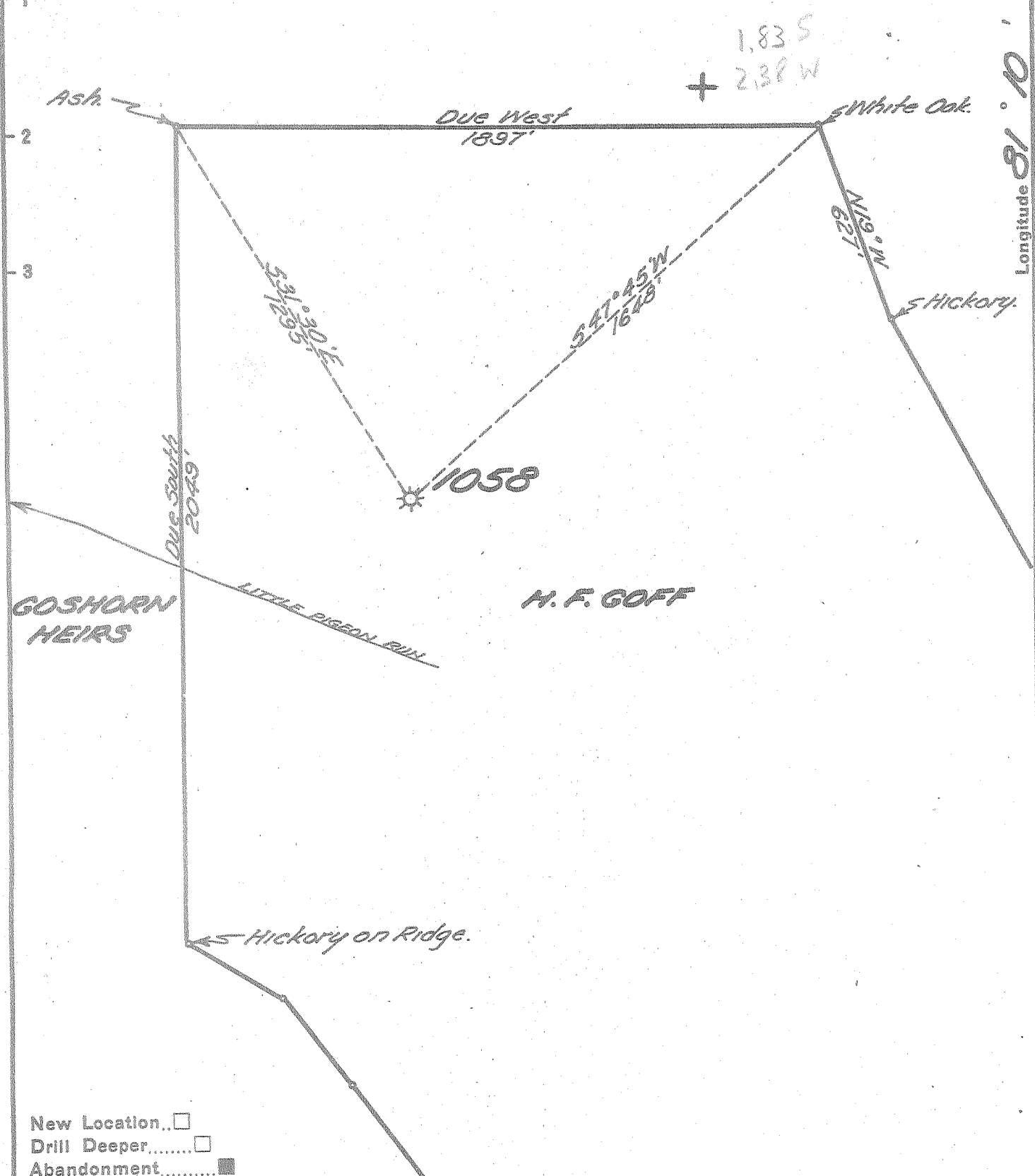


Latitude 38° 35'

A. SMITH ET. AL.



New Location..   
 Drill Deeper.....   
 Abandonment.....

Company UNITED FUEL GAS CO.  
 Address CHARLESTON W.VA.  
 Farm H. F. GOFF  
 Tract \_\_\_\_\_ Acres 97 Lease No. 12519  
 Well (Farm) No. 1 Serial No. 1058  
 Elevation (Spirit Level) 723.54'  
 Quadrangle OTTER  
 County ROANE District GEARY  
 Engineer Seybert Rhewell  
 Engineer's Registration No. 2529  
 File No. 84-73 Drawing No. \_\_\_\_\_  
 Date 4-30-54 Scale 1" = 400'

STATE OF WEST VIRGINIA  
 DEPARTMENT OF MINES  
 OIL AND GAS DIVISION  
 CHARLESTON

see microfih for Well Record  
**WELL LOCATION MAP**  
 FILE NO. ROA-834-A

+ Denotes location of well on United States Topographic Maps, scale 1 to 62,500, latitude and longitude lines being represented by border lines as shown.

- Denotes one inch spaces on border line of original tracing.