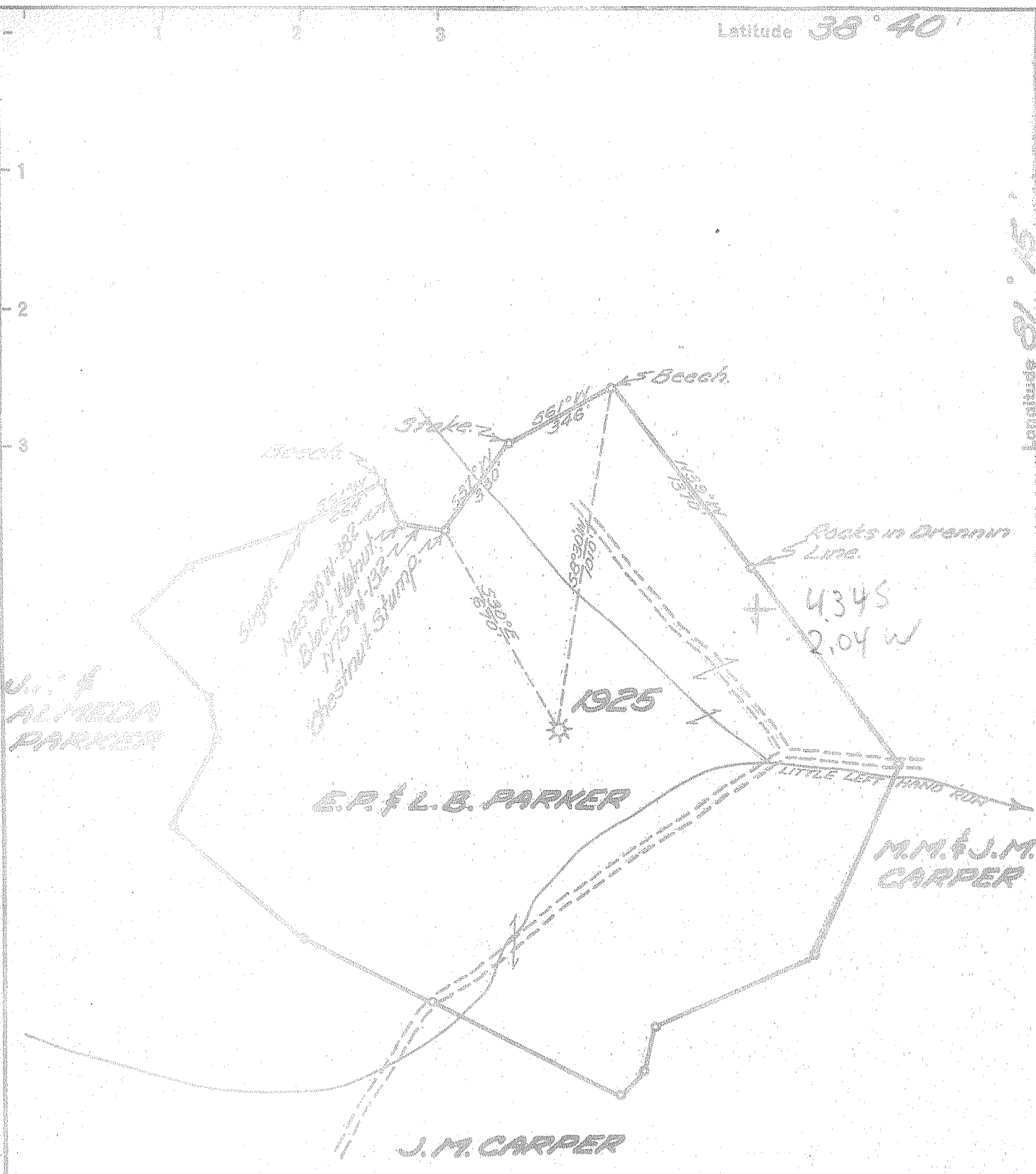


Latitude 38° 40'

Longitude 81° 15'



- New Location
- Drill Deeper
- Abandonment

Company	UNITED FUEL GAS CO.		
Address	CHARLESTON, W. VA.		
Farm	E.P. & L.B. PARKER		
Tract	Acres 100	Lease No.	11130
Well (Farm) No.	1	Serial No.	1925
Elevation (Spirit Level)	918.0'		
Quadrangle	WALTON		
County	ROANE	District	GEARY
Engineer	Robert Russell		
Engineer's Registration No.	2529		
File No.	80-75	Drawing No.	
Date	4-27-54	Scale	1" = 400'

STATE OF WEST VIRGINIA
 DEPARTMENT OF MINES
 OIL AND GAS DIVISION
 CHARLESTON
 See microfiche for Well Record
WELL LOCATION MAP
 FILE NO. RAA-838-A

* Denotes location of well on United States Topographic Maps, scale 1 to 62,500, latitude and longitude lines being represented by border lines as shown.
 = Denotes one inch spaces on border line of original tracing.