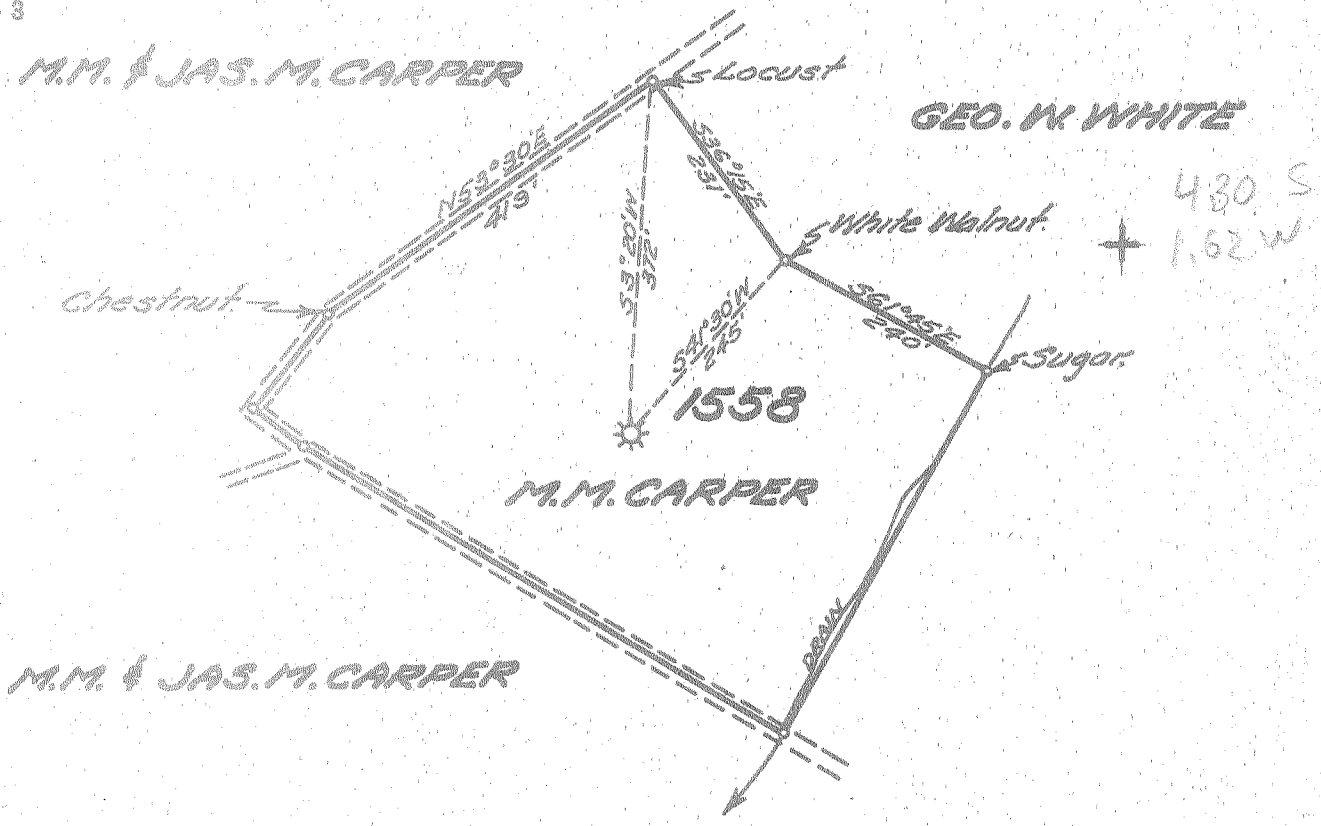


Latitude 38° 40'

Longitude 81° 15'



New Location
 Drill Deeper
 Abandonment

Company UNITED FUEL GAS CO.
 Address CHARLESTON, W. VA.
 Farm M. M. CARPER
 Tract _____ Acres 6 Lease No. 45
 Well (Farm) No. 1 Serial No. 1558
 Elevation (Spirit Level) 855.00'
 Quadrangle WALTON
 County ROANE District GEARY
 Engineer Seibert R. Jewell
 Engineer's Registration No. 2529
 File No. 80-75 Drawing No. _____
 Date 4-26-54 Scale 1" = 200'

STATE OF WEST VIRGINIA
 DEPARTMENT OF MINES
 OIL AND GAS DIVISION
 CHARLESTON
 { 9537
 14529
 21521 } see microfilm for Well Record
WELL LOCATION MAP
 FILE NO. BOA-826-A

+ Denotes location of well on United States Topographic Maps, scale 1 to 62,500, latitude and longitude lines being represented by border lines as shown.
 - Denotes one inch spaces on border line of original tracing.