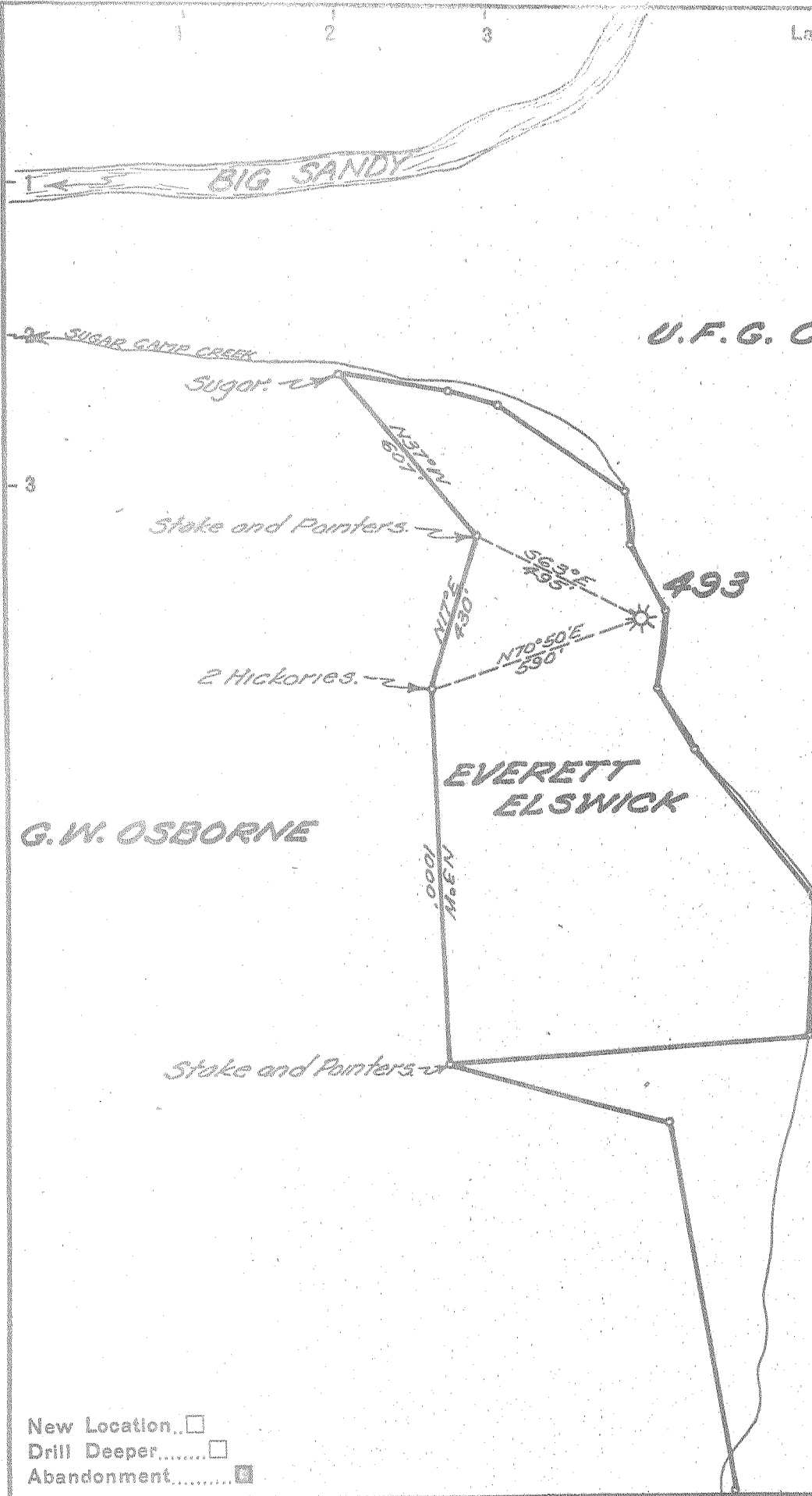


Latitude 38° 35'

Longitude 81° 15'



New Location...
 Drill Deeper.....
 Abandonment.....

Company UNITED FUEL GAS CO.
 Address CHARLESTON, W. VA.
 Farm EVERETT ELSWICK
 Tract _____ Acres 25 Lease No. 14090
 Well (Farm) No. _____ Serial No. 493
 Elevation (Spirit Level) 767.00'
 Quadrangle WALTON
 County ROANE District GEARY
 Engineer Seybert R. Jewell
 Engineer's Registration No. 2529
 File No. 80-71 Drawing No. _____
 Date 4-23-54 Scale 1" = 400'

STATE OF WEST VIRGINIA
 DEPARTMENT OF MINES
 OIL AND GAS DIVISION
 CHARLESTON.

see Microfilm for well record
WELL LOCATION MAP
 FILE NO. BOA-825-A

+ Denotes location of well on United States Topographic Maps, scale 1 to 62,500, latitude and longitude lines being represented by border lines as shown.

— Denotes one inch spaces on border line of original tracing.