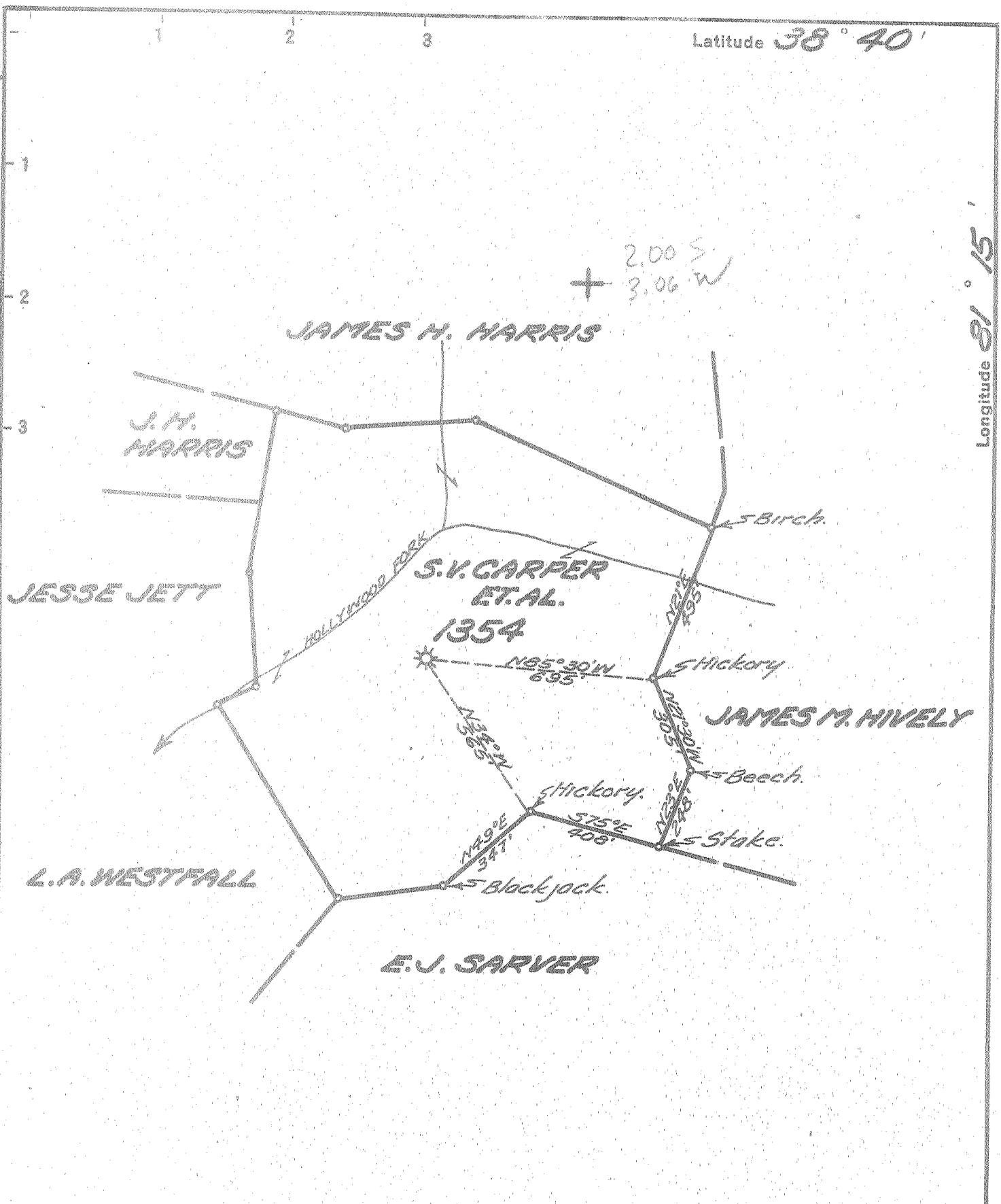


Latitude 38° 40'

Longitude 81° 15'



New Location...
 Drill Deeper.....
 Abandonment.....

Company UNITED FUEL GAS CO.
 Address CHARLESTON, W. VA.
 Farm S. V. CARPER, ET AL.
 Tract _____ Acres 33 Lease No. _____
 Well (Farm) No. 1 Serial No. 1354
 Elevation (Spirit Level) 930
 Quadrangle WALTON EC
 County ROANE District SMITHFIELD
 Engineer Paul E. Joachim
 Engineer's Registration No. 669
 File No. 78-79 Drawing No. _____
 Date 4-22-54 Scale 1" = 400'

STATE OF WEST VIRGINIA
 DEPARTMENT OF MINES
 OIL AND GAS DIVISION
 CHARLESTON

{ 12196
 12499
 17449 } see nearby for well Record

WELL LOCATION MAP
 FILE NO. ROA-823A

+ Denotes location of well on United States Topographic Maps, scale 1 to 62,500, latitude and longitude lines being represented by border lines as shown.

- Denotes one inch spaces on border line of original tracing.