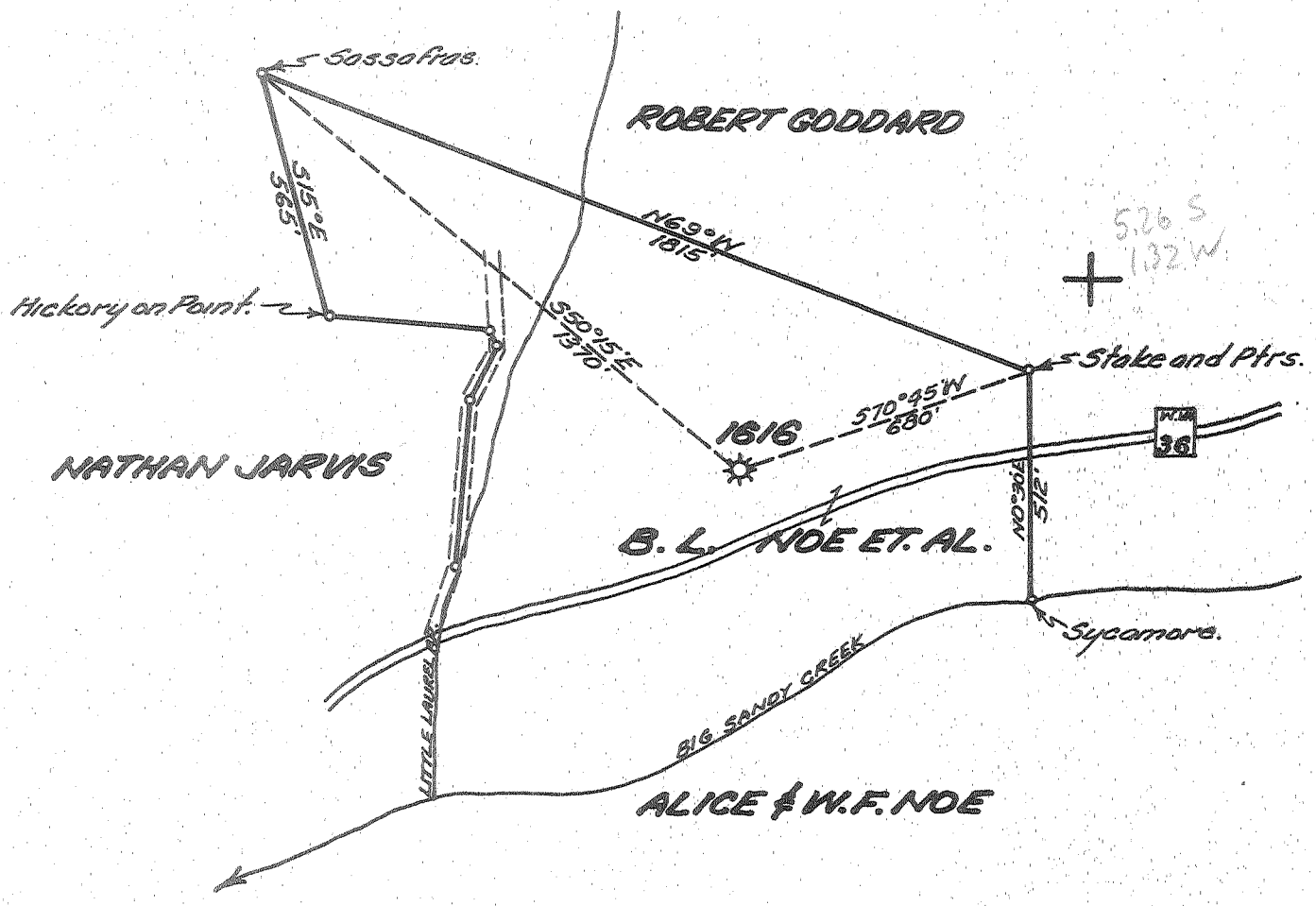


Latitude $38^{\circ} 40'$
 Longitude $81^{\circ} 10'$



New Location..
 Drill Deeper.....
 Abandonment.....

Company UNITED FUEL GAS CO.
 Address CHARLESTON, W. VA
 Farm B.L. NOE ET. AL.
 Tract _____ Acres 25 Lease No. 16070
 Well (Farm) No. _____ Serial No. 1616
 Elevation (Spirit Level) 865'
 Quadrangle OTTER
 County ROANE District GEARY
 Engineer Seybert R Ferrell
 Engineer's Registration No. 2529
 File No. 89-75 Drawing No. _____
 Date 3-4-54 Scale 1"=400'

STATE OF WEST VIRGINIA
 DEPARTMENT OF MINES
 OIL AND GAS DIVISION
 CHARLESTON
see microfilm for Well Record
WELL LOCATION MAP
 FILE NO. ROA-815-A

+ Denotes location of well on United States Topographic Maps, scale 1 to 62,500, latitude and longitude lines being represented by border lines as shown.

- Denotes one inch spaces on border line of original tracing.