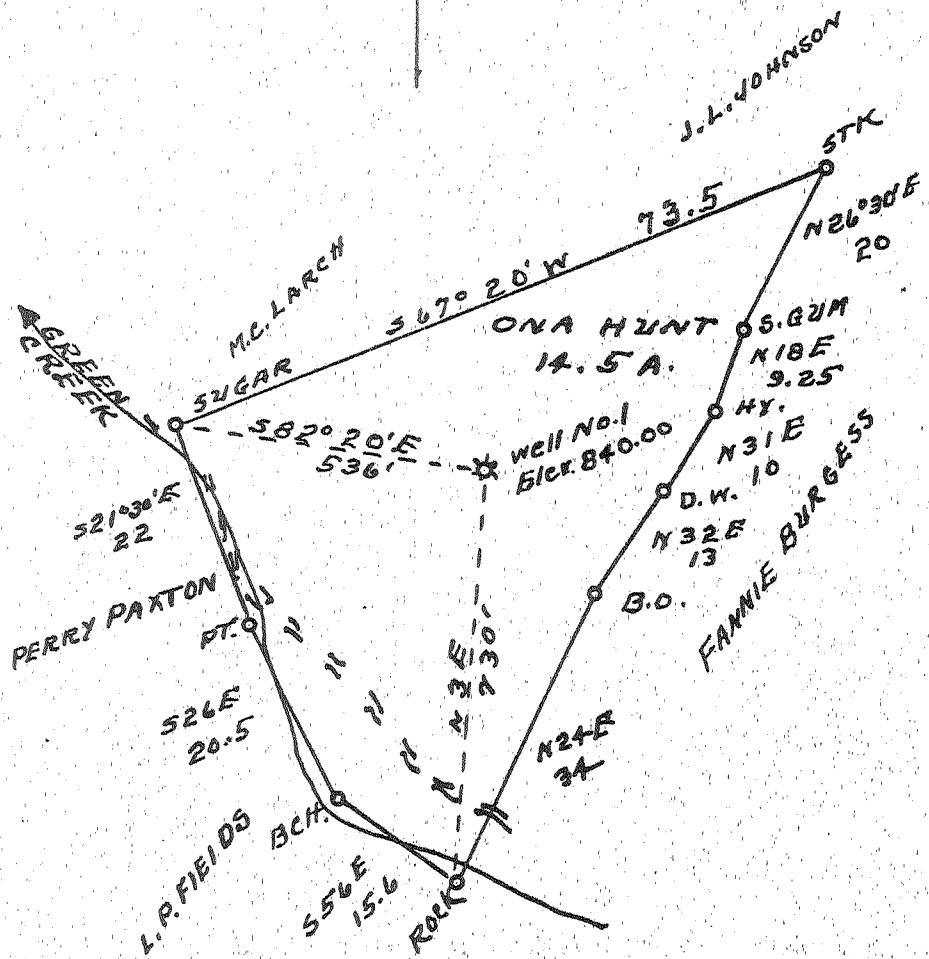


Latitude 38° 35'

Longitude 81° 25'



- New Location...
- Drill Deeper.....
- Abandonment.....

Company QUAKER STATE OIL REF. CORP.  
 1222 MARKET ST.  
 Address PARKERSBURG, W.VA.  
 Farm ONA HUNT  
 Tract \_\_\_\_\_ Acres 14.5 Lease No. \_\_\_\_\_  
 Well (Farm) No. 1 Serial No. \_\_\_\_\_  
 Elevation (Spirit Level) 840.00  
 Quadrangle WALTON SW  
 County ROANE District HARPER  
 Engineer L.F. Dye  
 Engineer's Registration No. 804  
 File No. \_\_\_\_\_ Drawing No. \_\_\_\_\_  
 Date 9-17-53 Scale 1" = 20 POLES

STATE OF WEST VIRGINIA  
 DEPARTMENT OF MINES  
 OIL AND GAS DIVISION  
 CHARLESTON

WELL LOCATION MAP  
 FILE NO. ROA-810-A

+ Denotes location of well on United States Topographic Maps, scale 1 to 62,500, latitude and longitude lines being represented by border lines as shown.

- Denotes one inch spaces on border line of original tracing.

ONA HUNT NO. 1 WELL.

810A

Harper District, Roane County, W. Va.  
By Ryan Oil Co., 218 Court Bldg., Evansville, Ind.  
Abandoned under permit Roa-.....-A(?); .....Quadrangle.  
On.....acres.  
Elevation, .....' L.  
Surface owned by Ruby Dixon, 811 Seventh St., Charleston, W. Va.  
Drilling commenced May 1, 1926.  
No record of shot.  
8 1/2" casing, 652' (pulled); 6 5/8" . 1702'.  
Coal was encountered at 770-778'.  
Gas well. Record to Dept. of Mines stamped May 1, 1956.  
Record to RCT from Mrs. Griffith June 21, 1956. Old File No. 560.

	Top.	Bottom.
Coal	770	- 778
Salt Sand	1275	- 1508
Maxton Sand	1550	- 1650
Little Lime	1650	- 1678
Big Lime	1689	- 1784
Big Injun Sand	1825	- 1868
Total depth		1870



150

STATE OF WEST VIRGINIA  
DEPARTMENT OF MINES  
OIL AND GAS DIVISION

Quadrangle \_\_\_\_\_  
Permit No. 810-A (Reamed)

WELL RECORD

Oil or Gas Well Gas  
(KIND)

Company RYAN OIL COMPANY  
Address 218 Court Bldg., Evansville, Ind.  
Farm Ona Hunt Acres \_\_\_\_\_  
Location (waters) Green Creek  
Well No. 1 (One) Elev. 740  
District Harper County Roane  
The surface of tract is owned in fee by Ruby Dixon  
811 7th St. Address Charleston, W. Va.  
Mineral rights are owned by \_\_\_\_\_  
Address \_\_\_\_\_  
Drilling commenced May 1, 1926  
Drilling completed \_\_\_\_\_  
Date Shot No record From \_\_\_\_\_ To \_\_\_\_\_  
With \_\_\_\_\_

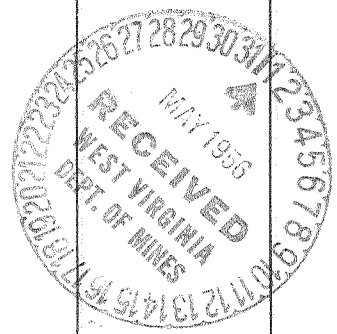
Casing and Tubing	Used in Drilling	Left in Well	Packers
Size			
16			Kind of Packer
13			
10			Size of
8 1/4	652'	None	
6 3/8	1702'	1702'	Depth set
5 3/16			
3			Perf. top
2			Perf. bottom
Liners Used			Perf. top
			Perf. bottom

Open Flow \_\_\_\_\_ /10ths Water in \_\_\_\_\_ Inch  
\_\_\_\_\_ /10ths Merc. in \_\_\_\_\_ Inch  
Volume \_\_\_\_\_ Cu. Ft.  
Rock Pressure \_\_\_\_\_ lbs. \_\_\_\_\_ hrs.  
Oil \_\_\_\_\_ bbls., 1st 24 hrs.  
Fresh water \_\_\_\_\_ feet \_\_\_\_\_ feet  
Salt water \_\_\_\_\_ feet \_\_\_\_\_ feet

CASING CEMENTED \_\_\_\_\_ SIZE \_\_\_\_\_ No. Ft. \_\_\_\_\_ Date \_\_\_\_\_

COAL WAS ENCOUNTERED AT 770 FEET \_\_\_\_\_ INCHES  
\_\_\_\_\_ FEET \_\_\_\_\_ INCHES \_\_\_\_\_ FEET \_\_\_\_\_ INCHES  
\_\_\_\_\_ FEET \_\_\_\_\_ INCHES \_\_\_\_\_ FEET \_\_\_\_\_ INCHES

Formation	Color	Hard or Soft	Top	Bottom	Oil, Gas or Water	Depth Found	Remarks
Coal			770	778			
Salt Sand			1275	1508			
Maxon Sand			1550	1650			
Little Lime			1650	1678			
Big Lime			1689	1784			
Big Injun			1825	1868			
Total Depth				1870			



JUNE 21 1956