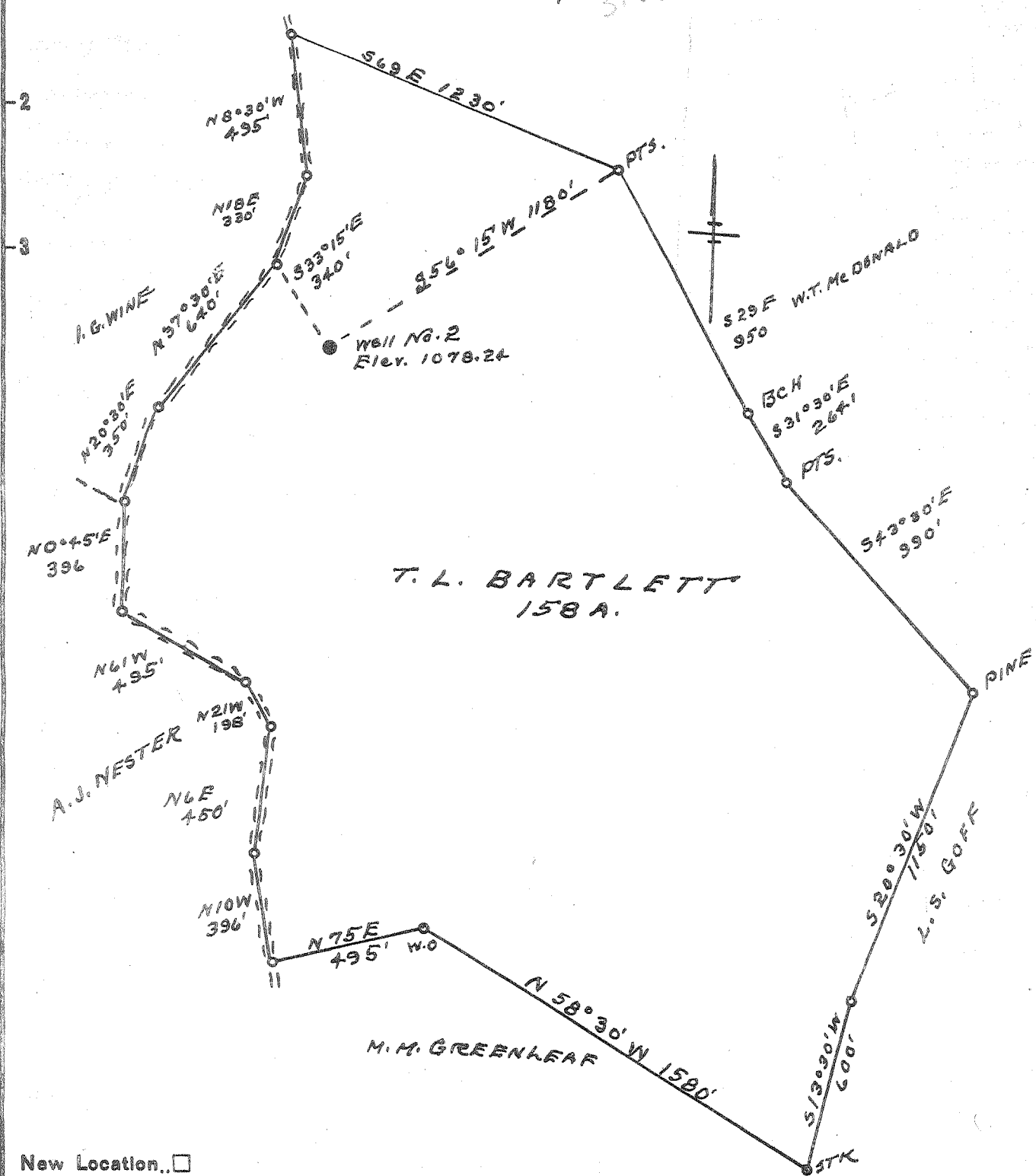


Latitude 38° 50'

Longitude 81° 15'

+ 4.32 S
3.60 W



New Location..
 Drill Deeper.....
 Abandonment.....

Company HARRIS & NIDAY
 Address SPENCER, W.VA.
 Farm T. L. BARTLETT
 Tract _____ Acres 158 Lease No. _____
 Well (Farm) No. 2 Serial No. _____
 Elevation (Spirit Level) 1078.24
 Quadrangle SPENCER
 County ROANE District SPENCER
 Engineer L. F. Rye
 Engineer's Registration No. 804
 File No. _____ Drawing No. _____
 Date 5-15-53 Scale 1" = 500'

STATE OF WEST VIRGINIA
 DEPARTMENT OF MINES
 OIL AND GAS DIVISION
 CHARLESTON
 SEE MICROFILM FOR WELL RECORD
WELL LOCATION MAP
 FILE NO. ROA-809-A

+ Denotes location of well on United States Topographic Maps, scale 1 to 62,500, latitude and longitude lines being represented by border lines as shown.
 - Denotes one inch spaces on border line of original tracing.