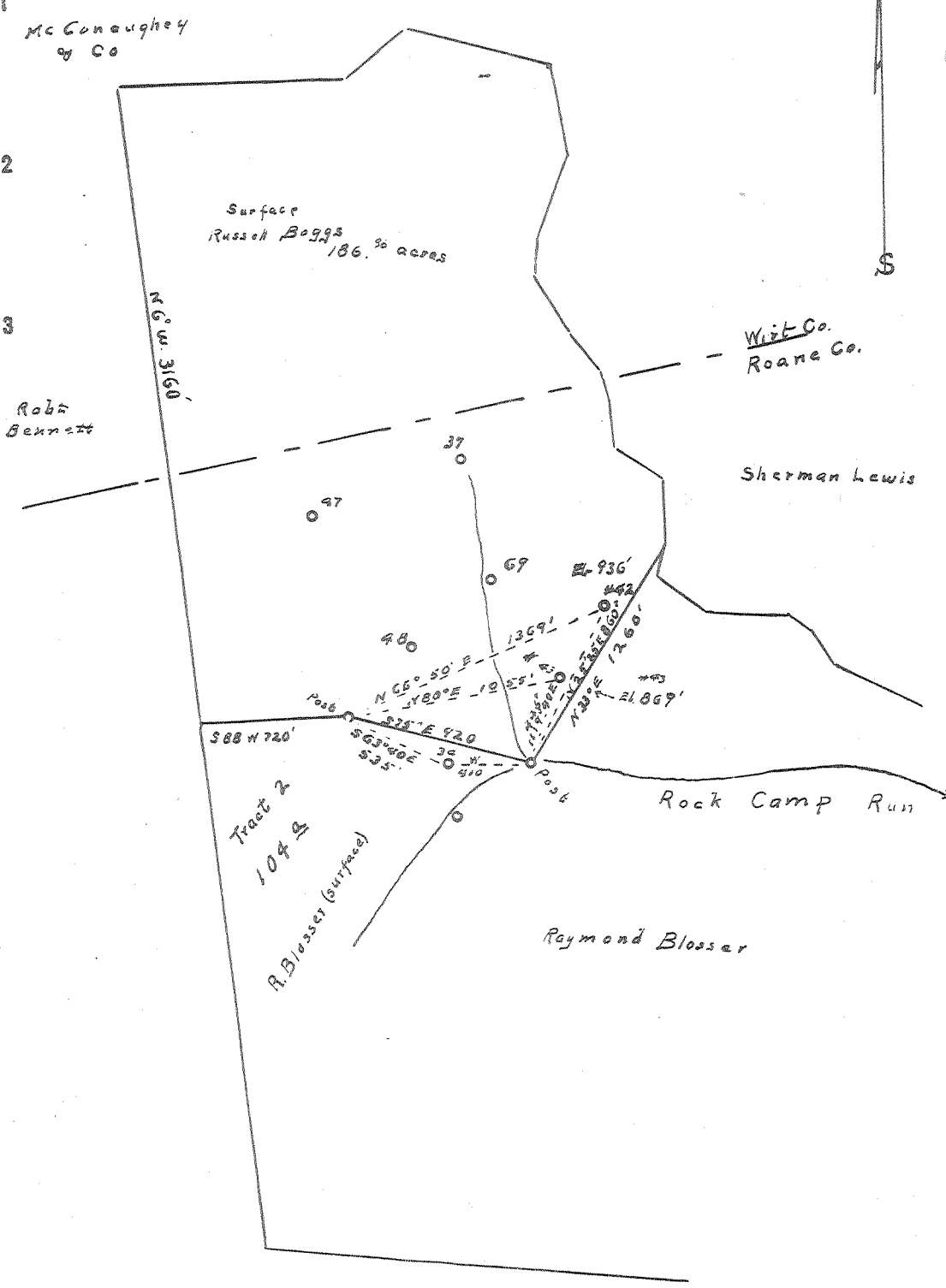


Latitude 38° 55'

42  
43

42 0.41 S  
2.04 W  
43 6.45 S  
2.10 W

Longitude 81° 15'



New Location   
 Drill Deeper   
 Abandonment

Company WEVA Oil Co.  
 Address 413 Peoples Bank Bldg. Marietta, Ohio  
 Farm Russell Boggs (surface)  
 Tract \_\_\_\_\_ Acres 186.86 Lease No. \_\_\_\_\_  
 Well (Farm) No. 42 9 43 Serial No. \_\_\_\_\_  
 Elevation (Spirit Level) 442-936'  
 Quadrangle Spencer  
 County Wirt & Roane District Spring Creek Spencer  
 Engineer Robert R. Anderson  
by O. Meredith  
 Engineer's Registration No. 296  
 File No. \_\_\_\_\_ Drawing No. \_\_\_\_\_  
 Date 3/2 53 Scale 1 in = 800 feet

STATE OF WEST VIRGINIA  
 DEPARTMENT OF MINES  
 OIL AND GAS DIVISION  
 CHARLESTON

see microfilm for well records  
**WELL LOCATION MAP**  
 FILE NO. ROA-805-A-#42  
ROA-806-A-#43

+ Denotes location of well on United States Topographic Maps, scale 1 to 62,500; latitude and longitude lines being represented by border lines as shown.  
 - Denotes one inch spaces on border line of original tracing.