

LATITUDE 38° 55'

4.15W  
3.695

LONGITUDE 101° 08'

7.5 OGIS topo location

7.5' loc \_\_\_\_\_ 15' loc \_\_\_\_\_  
 \_\_\_\_\_ (calc.) \_\_\_\_\_

Company \_\_\_\_\_

Farm \_\_\_\_\_

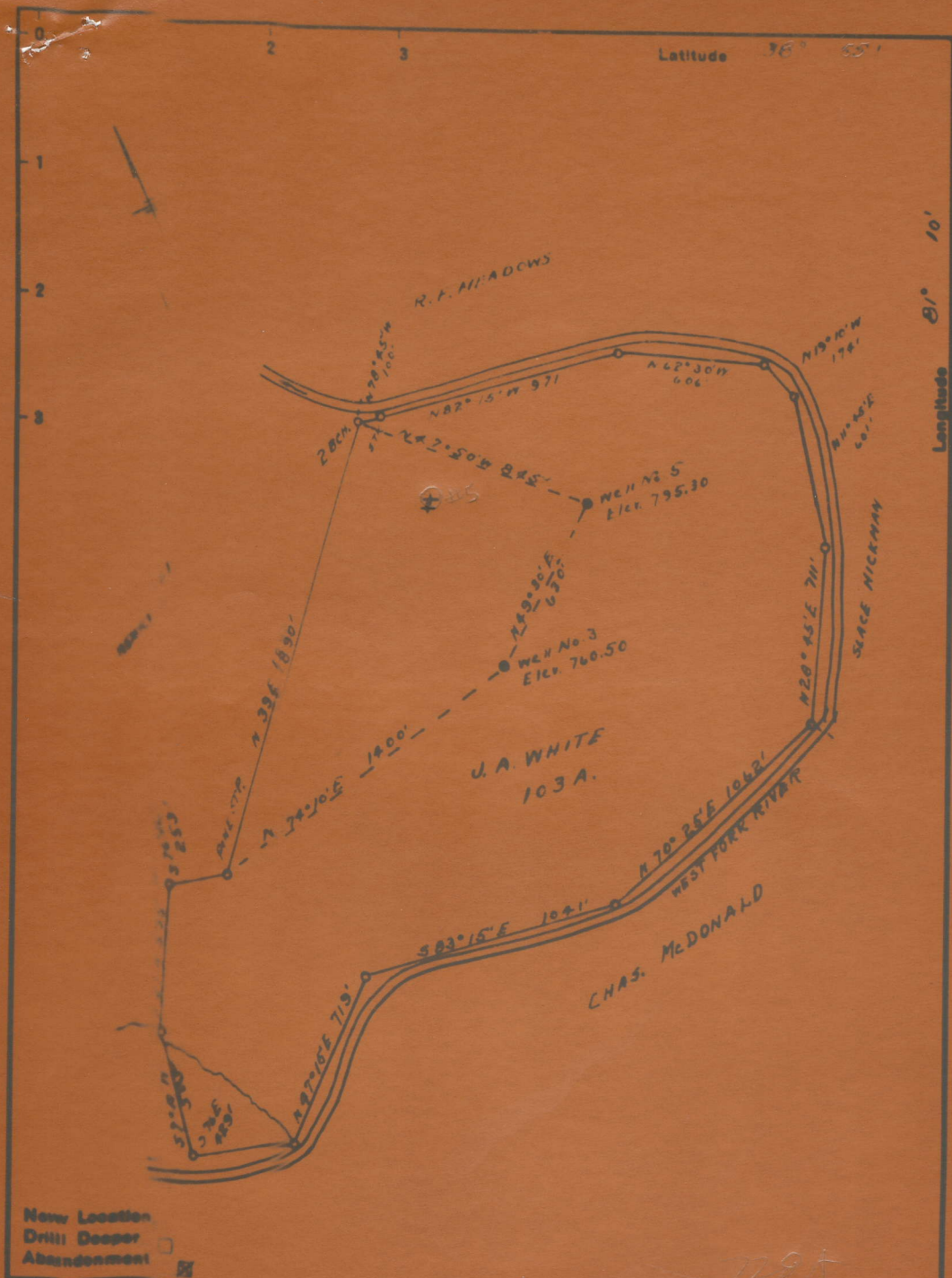
Quad Arnoldsburg (WC)

County Roane

District Spencer

WELL LOCATION MAP

File No. 087-7284



New Location  
 Drill Deeper   
 Abandonment

Company OKILGEE SUPPLY CORP.  
 Address OKILGEE, OKLA.  
 Farm U.A. WHITE

STATE OF WEST VIRGINIA  
 DEPARTMENT OF MINES  
 OIL AND GAS DIVISION

103A

JOHN A. WHITE NO. 5 WELL.

Spencer District, Roane County, W. Va.  
By Carter Oil Co.  
On 103 acres.  
Keller Map I-22.  
Elevation.....  
Completed Nov. 20, 1906.  
Oil well. Est. 25 bbls. (R)?  
S. P. - S-40 - W-36.  
On West Fork.  
From Heck's notes.

728A

(see microfilm for  
well record)

|                              | Top. | Bottom. |
|------------------------------|------|---------|
| Big Lime                     | 1795 | - 1908  |
| Big Injun Sand               | 1908 | - 1955  |
| Berea Sand (oil, 2320-2328') | 2306 | - 2332  |
| Total depth                  |      | 2335    |

JOHN A. WHITE NOS. 1, 2, 3, 4, 6, 7, and 8 given as R? oil wells.