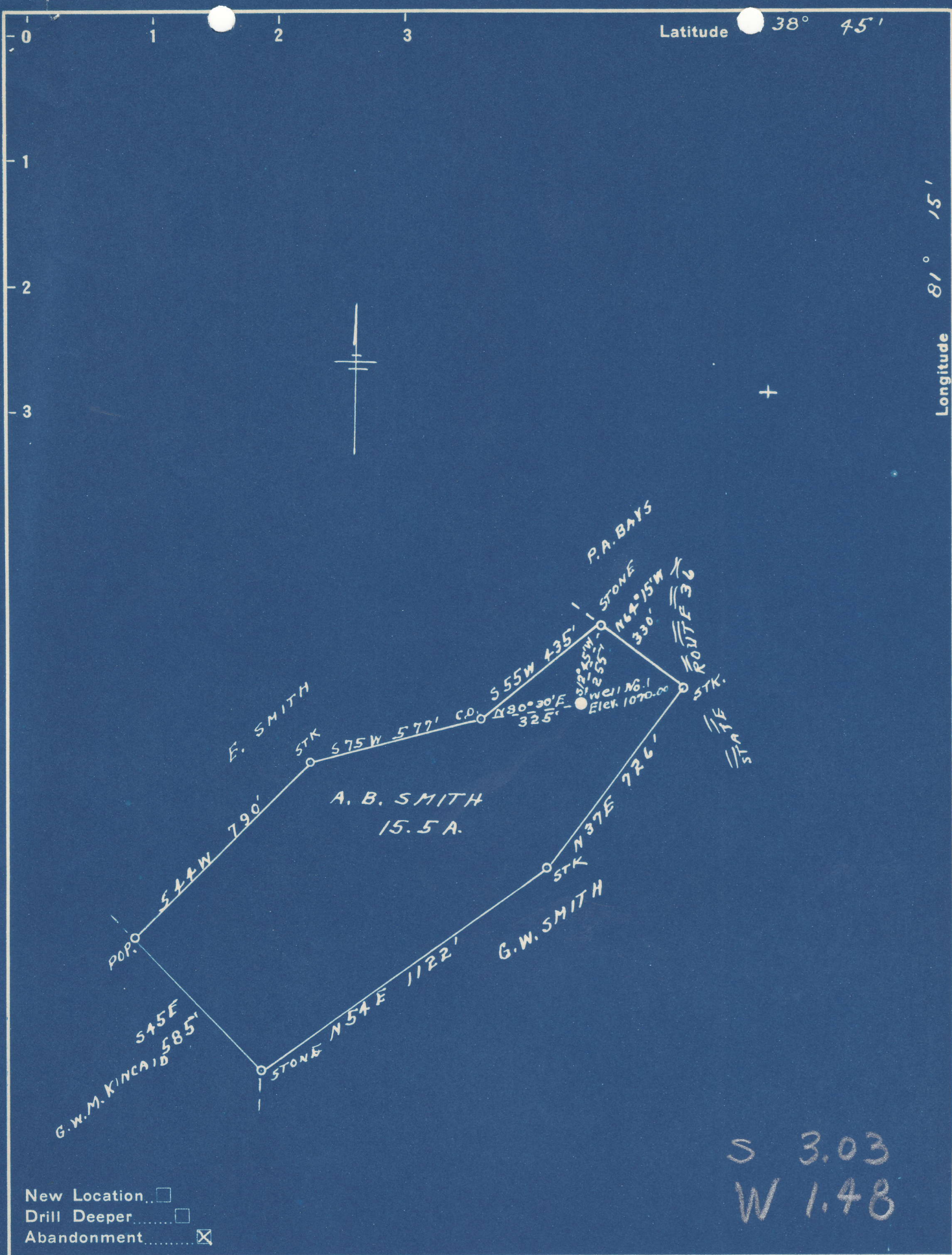


Latitude 38° 45'

Longitude 81° 15'



S 3.03
W 1.48

New Location...
 Drill Deeper...
 Abandonment...

Company HARRIS & NIDAY
 Address SPENCER, W. VA.
 Farm A. B. SMITH
 Tract _____ Acres 15.5 Lease No. _____
 Well (Farm) No. 1 Serial No. _____
 Elevation (Spirit Level) 1070.00 **NE**
 Quadrangle WALTON
 County ROANE District SMITHFIELD
 Engineer L. F. Dye
 Engineer's Registration No. 804
 File No. _____ Drawing No. _____
 Date 12-26-50 Scale 1" = 400'

STATE OF WEST VIRGINIA
 DEPARTMENT OF MINES
 OIL AND GAS DIVISION
 CHARLESTON

WELL LOCATION MAP

FILE NO. ROA-721-A

+ Denotes location of well on United States Topographic Maps, scale 1 to 62,500, latitude and longitude lines being represented by border lines as shown.

- Denotes one inch spaces on border line of original tracing.

Walton District, Roane County, W. Va.
 By The Ohio Fuel Oil Co.
 Well completed Jan. 23, 1911.
 Contractor, Pratt Drilling Co., Charleston, W. Va.
 Drillers, Clark Irvin and Joe Triplet.
 Conductor, 16'.
 Well shot Jan. 23, 1911, with 30 qts.
 1st day's production, 25 bbls.
 6-5/8" threads, 16' 7". Examined and approved by E.H.Lange, Foreman.
 Copied from Record Books of The Ohio F.O.Co. by C.E.Krebs, Nov. 10, 1911.

70283
 clw. 1070. 721A

See microfilm for well record

	Top.	Bottom.	Thickness.
Conducot	0	- 16	16
Bluff sand	25	- 50	25
Sand, lime	50	- 130	80
Pittsburgh Sand	130	- 300	170
Red rock	300	- 375	75
Sand and lime	375	- 485	110
Red rock	485	- 640	155
Lime and sand	640	- 700	60
Red rock	700	- 785	85
Little Dunkard Sand	785	- 820	35
Red rock	820	- 985	165
Big Dunkard Sand	985	- 1110	125
Sand	1110	- 1200	90
Break and slate	1200	- 1240	40
Sand	1240	- 1430	190
Break	1430	- 1460	30
Sand, lime	1460	- 1580	120
Break and slate	1580	- 1655	75
Salt Sand (water, 1740')	1655		
Sand and lime	1740	- 1985	245
Little Lime	1985	- 2015	30
Pencil Cave	2015	- 2020	5
Big Lime	2020	- 2135	115
Sand, Big Injun (oil, 2160-2180)	2135	- 2183	48
Total depth		2183	