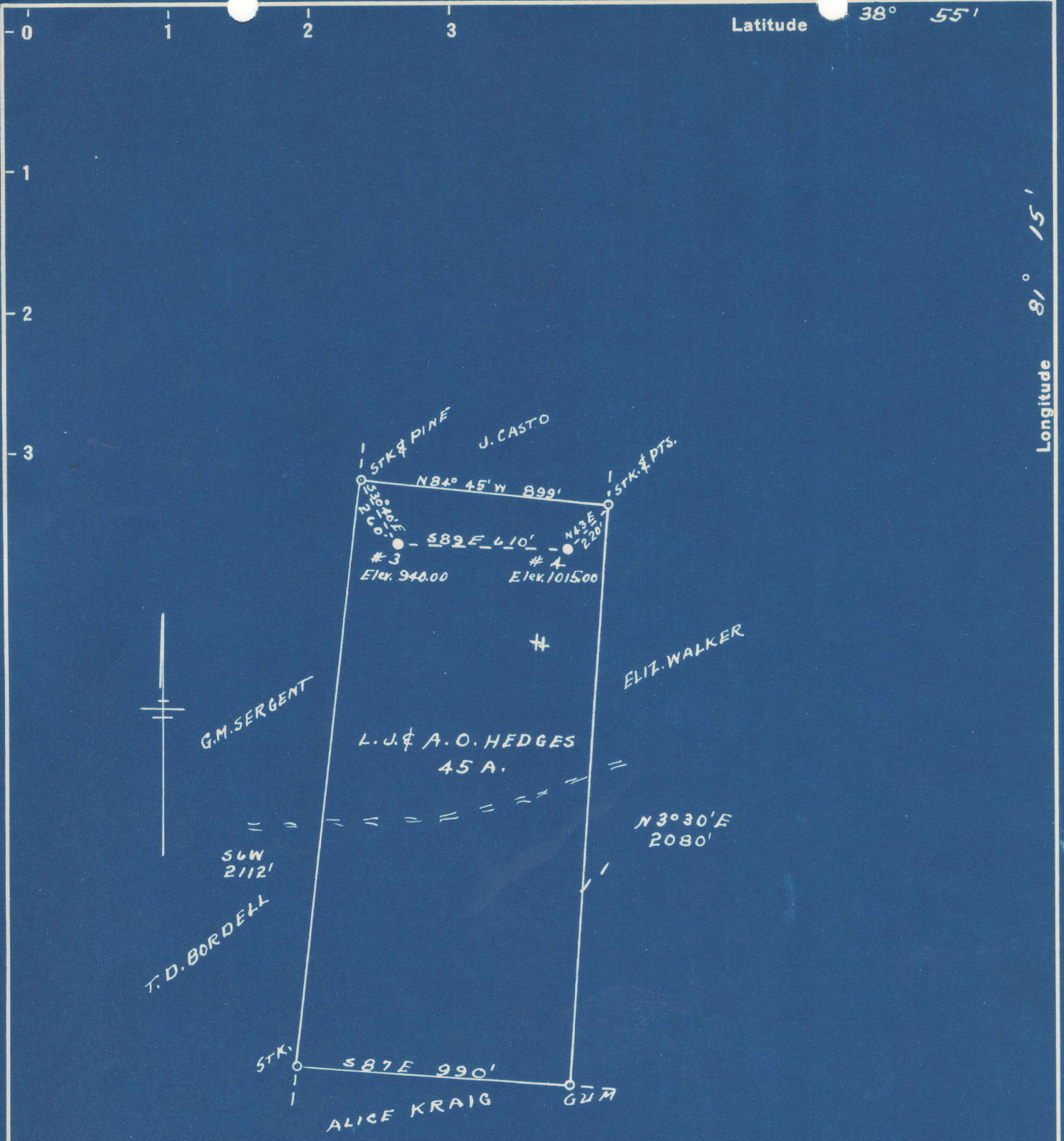


Latitude 38° 55'

Longitude 81° 15'



719-A S 4.57
 #3 | W 3.72

 720-A S 4.59
 #4 | W 3.69

New Location...
 Drill Deeper.....
 Abandonment.....

Company JOE W. GIBONEY
 Address SPENCER, W. VA.
 Farm L. J. & A. O. HEDGES
 Tract _____ Acres 45 Lease No. _____
 Well (Farm) No. 33-A Serial No. _____
 Elevation (Spirit Level) #3-940.00 #4-1015.00
 Quadrangle SPENCER
 County ROANE District SPENCER
 Engineer L. F. Dye
 Engineer's Registration No. 804
 File No. _____ Drawing No. _____
 Date 11-1-50 Scale 1" = 500'

STATE OF WEST VIRGINIA
 DEPARTMENT OF MINES
 OIL AND GAS DIVISION
 CHARLESTON
see microfilm for Well Record
WELL LOCATION MAP
 FILE NO. ROA-719-A-#3
ROA-720-A-#4
 + Denotes location of well on United States Topographic Maps, scale 1 to 62,500, latitude and longitude lines being represented by border lines as shown.
 = Denotes one inch spaces on border line of original tracing.

L. J. AND A. O. HEDGES NO. 3 WELL.

719A

70145

Spencer District, Roane County, W. Va.
By Heck Oil Co. (Now owned by South Penn Oil Co.)
On 45 acres.
Elevation.....
Completed Dec. 21, 1916.
Gas well. 7/10 Merc. in 6 $\frac{5}{8}$ ". May be Big Injun oil now.
On Boggs Run.
S. P. - S-40 - W-40.
From Heck's notes.

	Top.	Bottom.
Big Lime	2005	- 2117
Big Injun Sand	2132	-
Berea Sand (pay, 2540-2560')	2532	- 2565
Total depth		2572

L. J. AND A. O. HEDGES NO. 4 WELL.

720A

70146

Spencer District, Roane County, W. Va.
By Heck Oil Co. (Now owned by South Penn Oil Co.)
On....acres.
Elevation.....
Completed Feb. 25, 1917.
Gas well. 5/10 W. in 6 $\frac{5}{8}$ ". May be Big Injun oil now.
On Little Creek.
S. P. - S-40 - W-40. 826 mcf
From Heck's notes.

	Top.	Bottom.
Big Lime	2065	- 2175
Berea Sand (pay, 2617-2630')	2609	- 2632
Total depth		2637