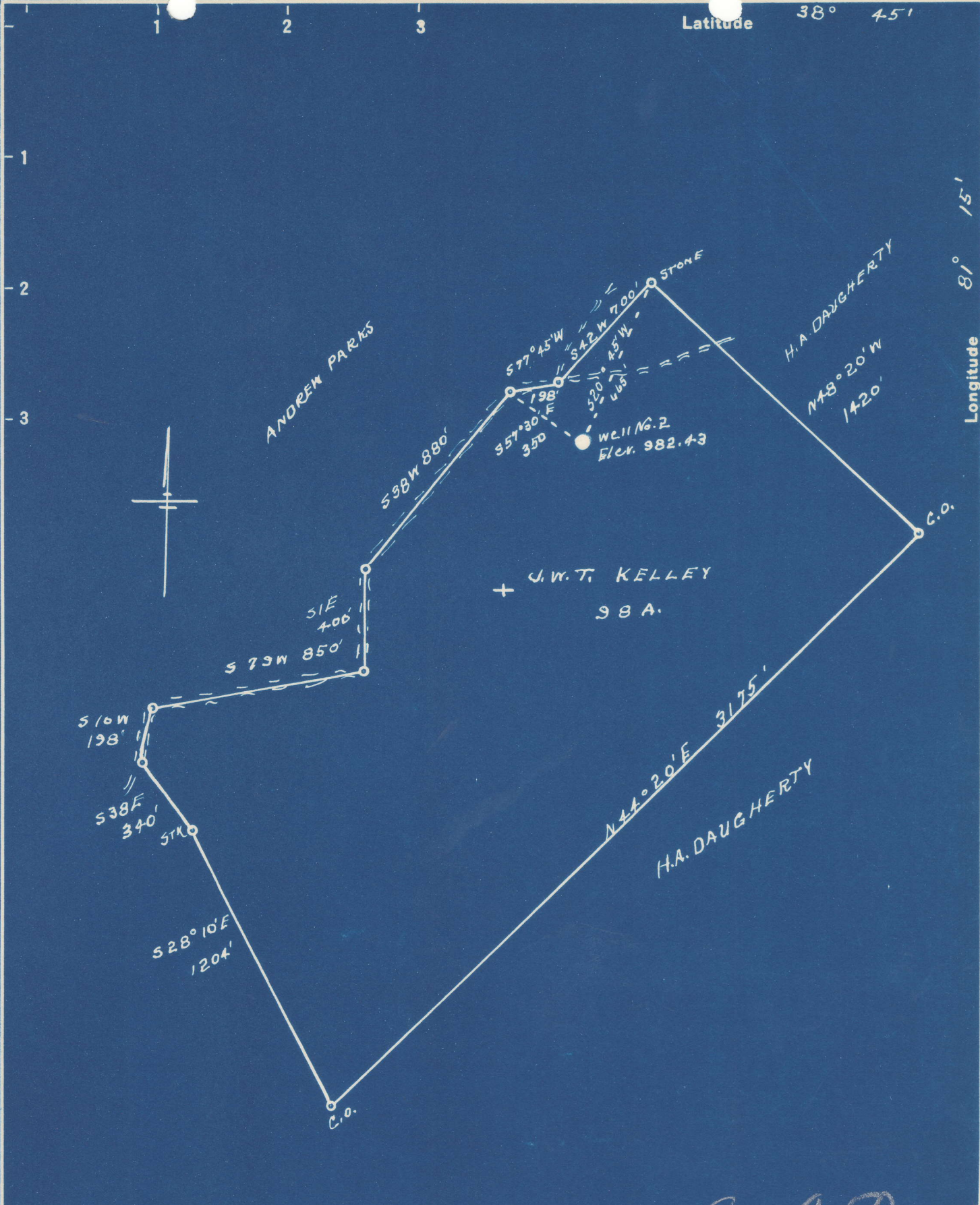


Latitude 38° 45'

Longitude 81° 15'



S 4.50
W 3.69

New Location...
 Drill Deeper.....
 Abandonment.....

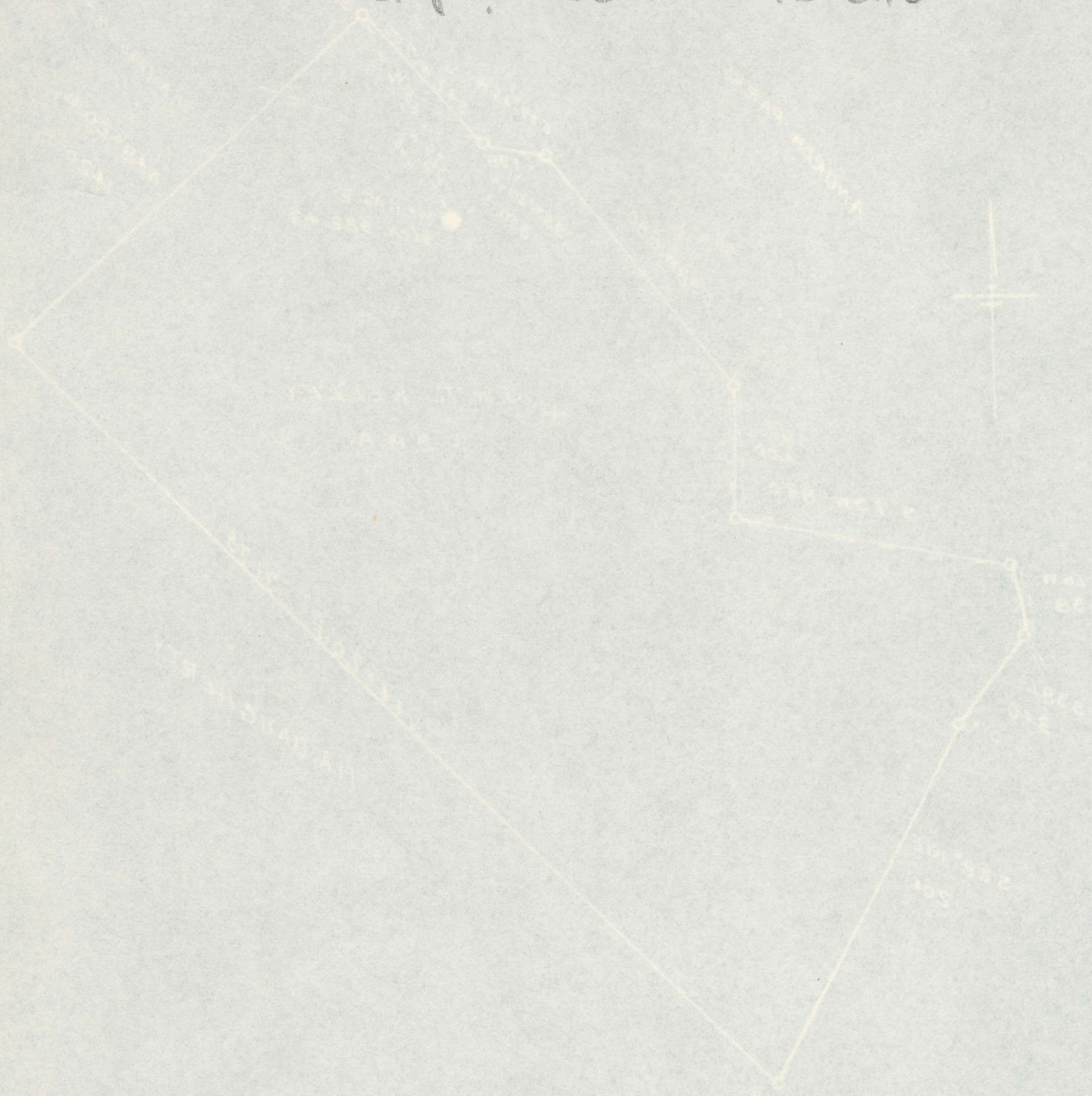
Company WILLIAM CASSADY
 Address SPENCER, W.VA.
 Farm W.W.T. KELLEY
 Tract _____ Acres 98 Lease No. _____
 Well (Farm) No. 2 Serial No. _____
 Elevation (Spirit Level) 982.43
 Quadrangle WALTON
 County ROANE District SMITHFIELD
 Engineer R.F. Rye
 Engineer's Registration No. 804
 File No. _____ Drawing No. _____
 Date 2-13-50 Scale 1" = 500'

STATE OF WEST VIRGINIA
 DEPARTMENT OF MINES
 OIL AND GAS DIVISION
 CHARLESTON
see microfilm for Well Record
WELL LOCATION MAP
 FILE NO. ROA-685-A

+ Denotes location of well on United States Topographic Maps, scale 1 to 62,500, latitude and longitude lines being represented by border lines as shown.
 - Denotes one inch spaces on border line of original tracing.

O+G Div An. Rpt 1950, table 6

Roane G85A comp? oil well 7D 2110



New Location
 Drill Depth
 Assortment

STATE OF WEST VIRGINIA
 DEPARTMENT OF MINES
 OIL AND GAS DIVISION
 CHARLESTON

WELL LOCATION MAP
 FILE NO. ROA 652-A

+ Denotes location of well on United States
 Topographic Map, scale 1 to 62,500. Lat-
 itude and longitude lines being represented
 by border lines as shown.
 - Denotes one inch spaces on border line
 of original tracing.

Company: WILLIAM M. BRADLEY
 Address: SALESBROOK, W. VA.
 Farm: W. VA. TRACT
 Tract: Area 2B, Lease No.
 Well (Farm) No.: 2 Serial No.:
 Elevation (Spot Level): 982.3
 Quadrangle: W. VA. 7
 Contour: ROANE DISTRICT
 Engineer: R. E. [unclear]
 Engineer's Registration No.: 604
 File No.: Drawing No.
 Date: 5-10-50 Scale: 1" = 500'

6-6 (196)