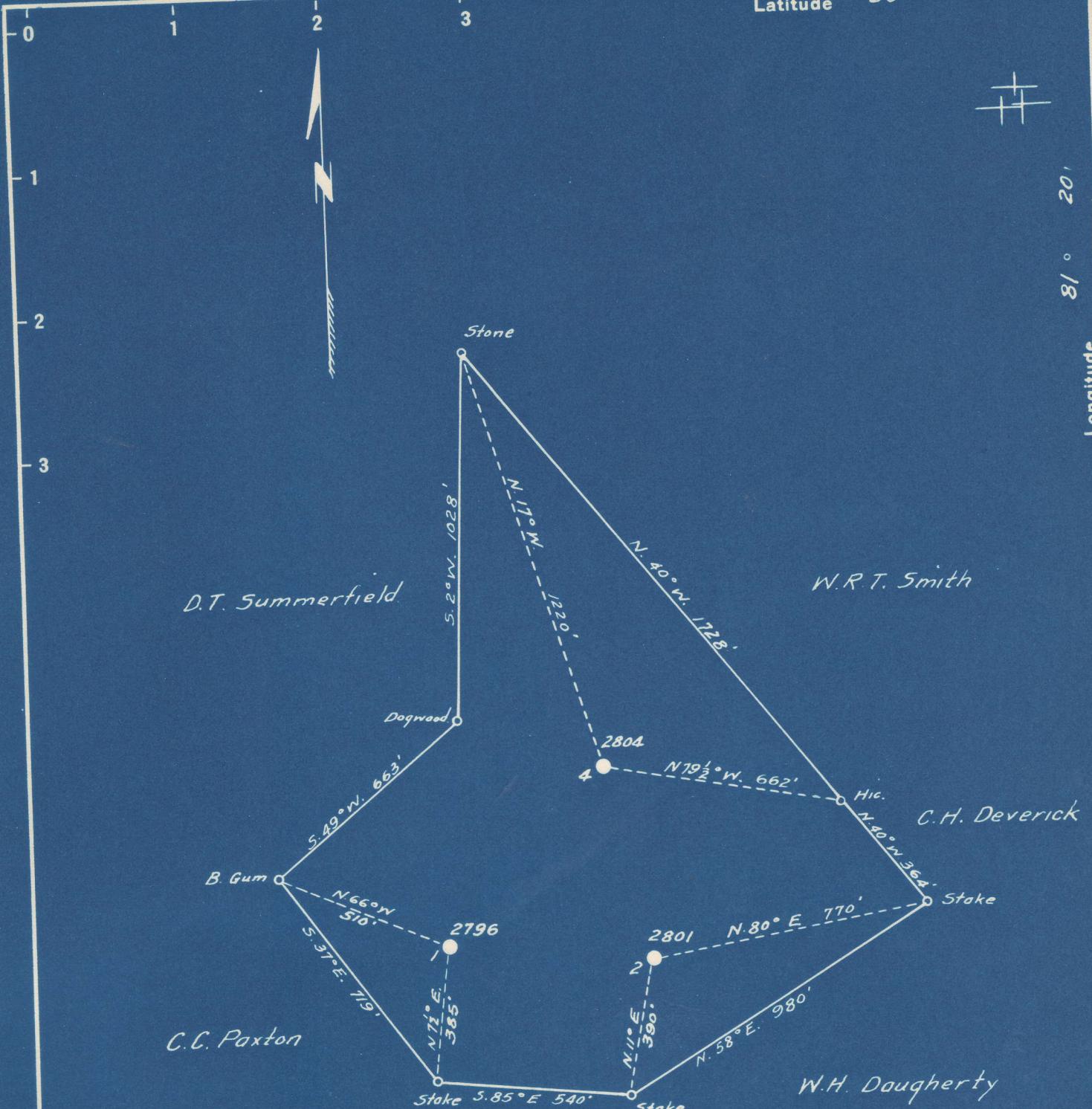


Latitude 38° 40'

Longitude 81° 20'



COAL NOT OPERATED

# 1	0.93 S	0.64 W
# 2	0.91 S	0.50 W
# 4	0.79 S	0.54 W

New Location...
 Drill Deeper.....
 Abandonment.....

Company SAM BEREN
 Address 516- 4th St., MARIETTA, Ohio
 Farm KEEFER HEIRS
 Tract _____ Acres 41.0 Lease No. 1833
 Well (Farm) No. 1-2-4 Serial No. 2796
 Elevation (Spirit Level) 1096.0 2801 2804
 Quadrangle WALTON
 County ROANE District WALTON C
 Engineer B. E. Kelly
 Engineer's Registration No. 9
 File No. _____ Drawing No. _____
 Date 8-8-49 Scale 1" - 400'

STATE OF WEST VIRGINIA
 DEPARTMENT OF MINES
 OIL AND GAS DIVISION
 CHARLESTON

WELL LOCATION MAP

FILE NO. ROA-678-A-#1
ROA-679-A-#2
ROA-680-A-#4 (see microfilm for well record)

+ Denotes location of well on United States Topographic Maps, scale 1 to 62,500, latitude and longitude lines being represented by border lines as shown.
 - Denotes one inch spaces on border line of original tracing.

(196)

679A
70164

Walton District, Roane County, W. Va.

By The Ohio Fuel Oil Co.

Drilling commenced May 2, 1911, and completed July 28, 1911.

Contractor, Pratt Drilling Co., Charleston, W. Va.

Drillers, Bruce Duncan and Charley Wible.

Conductor, 16'.

6-5/8" threads, 16' 9".

Examined and approved by E. H. Lange, Foreman.

Copied from Record Books of The Ohio Fuel Oil Co. by C. E. Krebs
Nov. 9, 1911.

	Top.	Bottom.	Thickness.
Conductor	0	- 16	16
Sand	220	- 260	40
Sand	400	- 425	25
Sand	610	- 644	34
Little Dunkard Sand	690	- 730	40
Big Dunkard Sand	765	- 965	200
Sand	985	- 1060	75
Sand	1120	- 1280	160
Sand	1320	- 1400	80
Salt Sand (big water, 1600')	1550	- 1853	303
Little Lime	1853	- 1889	36
Pencil Cave	1889	- 1896	7
Big Lime	1896	- 1981	85
Keener Sand	1981	- 2030	49
Big Injun Sand	2030	- 2064	34
Total depth		2066	

see microfilm for well record