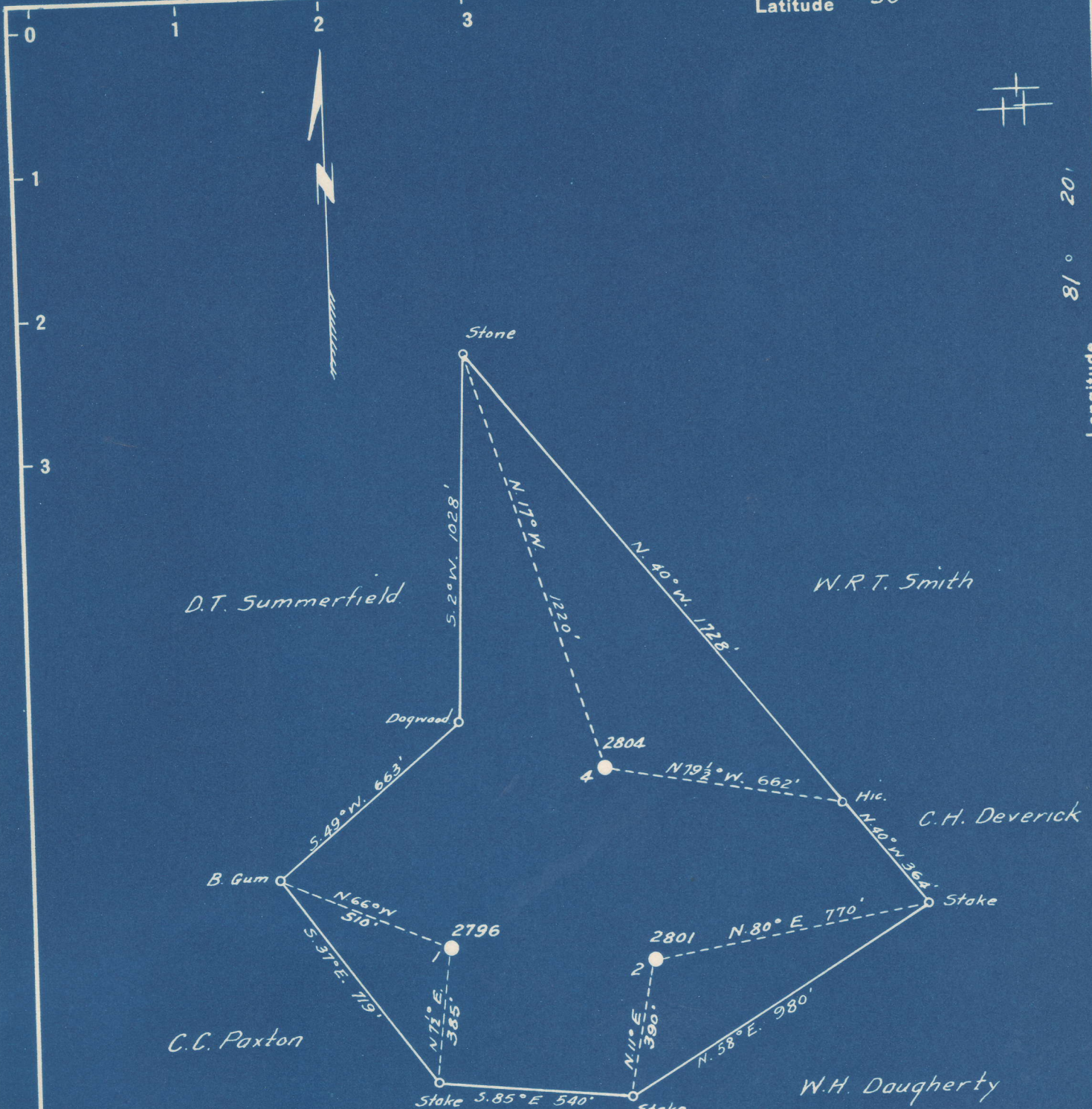


Latitude 38° 40'

Longitude 81° 20'



COAL NOT OPERATED

# 1	0.93 S	0.64 W
# 2	0.91 S	0.50 W
# 4	0.79 S	0.54 W

New Location...
 Drill Deeper.....
 Abandonment.....

Company SAM BEREN
 Address 516 - 4th St., Marietta, Ohio
 Farm KEFFER HEIRS
 Tract _____ Acres 41.0 Lease No. 1833
 Well (Farm) No. 1-2-4 Serial No. 2796
 Elevation (Spirit Level) 1096.0 2801
2804
 Quadrangle WALTON
 County ROANE District WALTON C
 Engineer C. E. Kelsa
 Engineer's Registration No. 9
 File No. _____ Drawing No. _____
 Date 8-8-49 Scale 1" - 400'

STATE OF WEST VIRGINIA
 DEPARTMENT OF MINES
 OIL AND GAS DIVISION
 CHARLESTON

WELL LOCATION MAP

FILE NO. ROA-678-A-#1
ROA-679-A-#2
ROA-680-A-#4 (see misc. for well recs)

+ Denotes location of well on United States Topographic Maps, scale 1 to 62,500, latitude and longitude lines being represented by border lines as shown.

- Denotes one inch spaces on border line of original tracing.

(195)

Walton District, Roane County, W. Va.

By The Ohio Fuel Oil Co.

Drilling commenced June 2, 1911, and completed July 11, 1911.

Contractor, Pratt Drilling Co.

Drillers, Henry Ownes (Owens?) and Cyrus Dawson.

Conductor, 16'.

Well shot July 10, 1911, with 40 qts.

1st day's production, 20 bbls.

6-5/8" threads, 16' 9".

Examined and approved by H. Lange, Foreman.

Copied from Record Books of The Ohio Fuel Oil Co. by C. E. Krebs,
Nov. 9, 1911.

	Top.	Bottom.	Thickness.
Conductor	0	- 16	16
Red rock	16	- 200	184
Sand	200	- 310	110
Slate	310	- 350	40
Slate and shell	350	- 710	360
Sand	710	- 740	30
Slate	740	- 885	145
Big Dunkard Sand	885	- 970	85
Slate and shell	970	- 1200	230
Sand	1200	- 1450	250
Slate	1450	- 1670	220
Salt Sand (first water, 1750'; hole full water, 1810')		1670	
Little Lime		1963	
Big Lime	2009	- 2120	111
Keener Sand	2120	- 2136	14
Big Injun Sand (pay, 2162-2186')	2136	- 2185	50
Total depth		2191	

see microfilm for well record