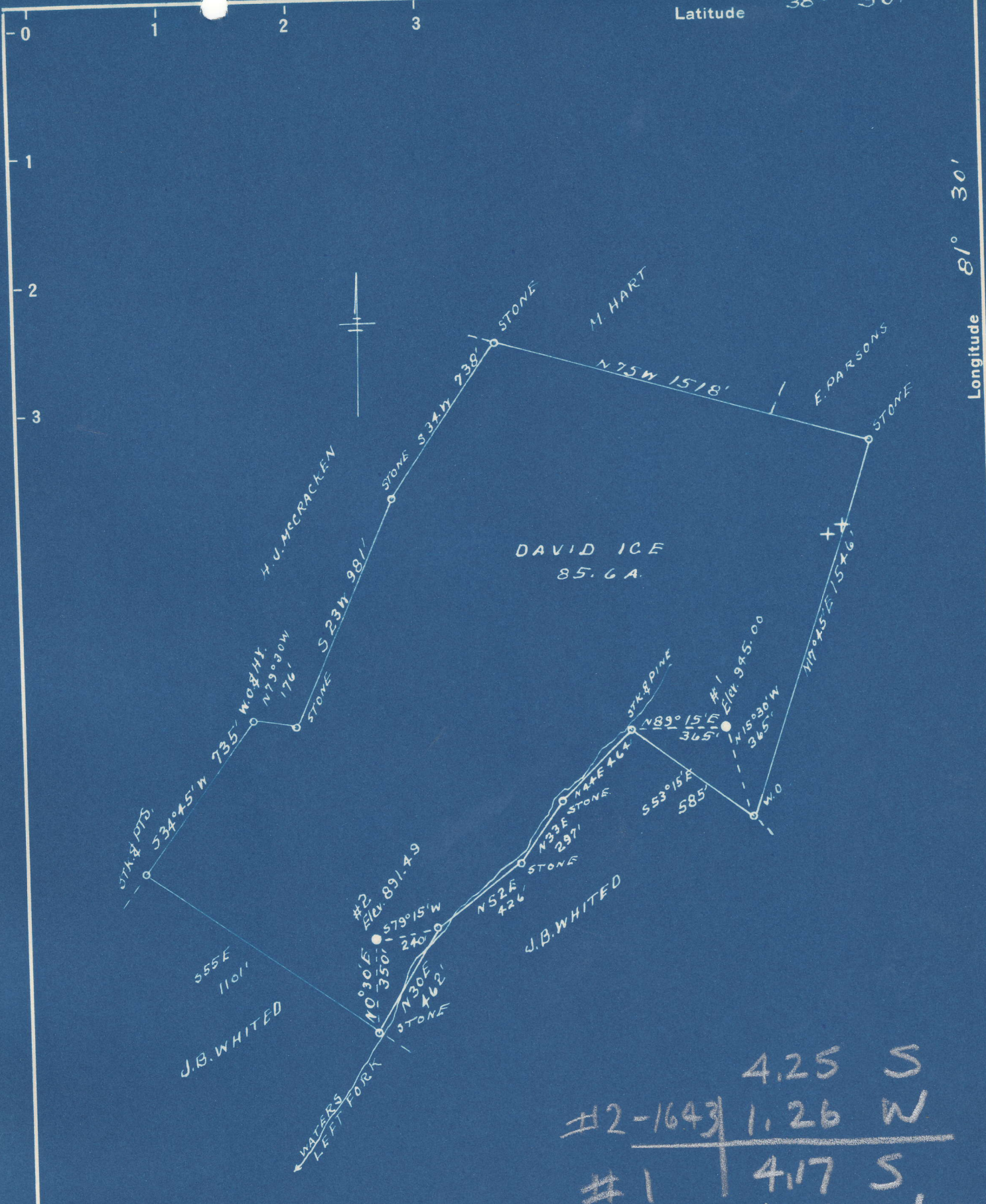


Latitude 38° 50'

Longitude 81° 30'



#2-1643	4.25	S
	1.26	W
#1	4.17	S
	1.14	W

New Location
 Drill Deeper
 Abandonment

Company WALKER-BEREN OIL CO.
 Address BOX 1065 PARKERSBURG, W.VA.
 Farm DAVID ICE
 Tract _____ Acres 85.6 Lease No. _____
 Well (Farm) No.s 1-2 Serial No. _____
 Elevation (Spirit Level) #1-945.00 #2-891.49
 Quadrangle RIPLEY
 County ROANE District CURTIS
 Engineer G. F. Dye
 Engineer's Registration No. 804
 File No. _____ Drawing No. _____
 Date 8-29-49 Scale 1" = 500'

STATE OF WEST VIRGINIA
 DEPARTMENT OF MINES
 OIL AND GAS DIVISION
 CHARLESTON
See microfilm for Well Record
WELL LOCATION MAP
 FILE NO. ROA-655-A-#2-1643

+ Denotes location of well on United States Topographic Maps, scale 1 to 62,500, latitude and longitude lines being represented by border lines as shown.

- Denotes one inch spaces on border line of original tracing.