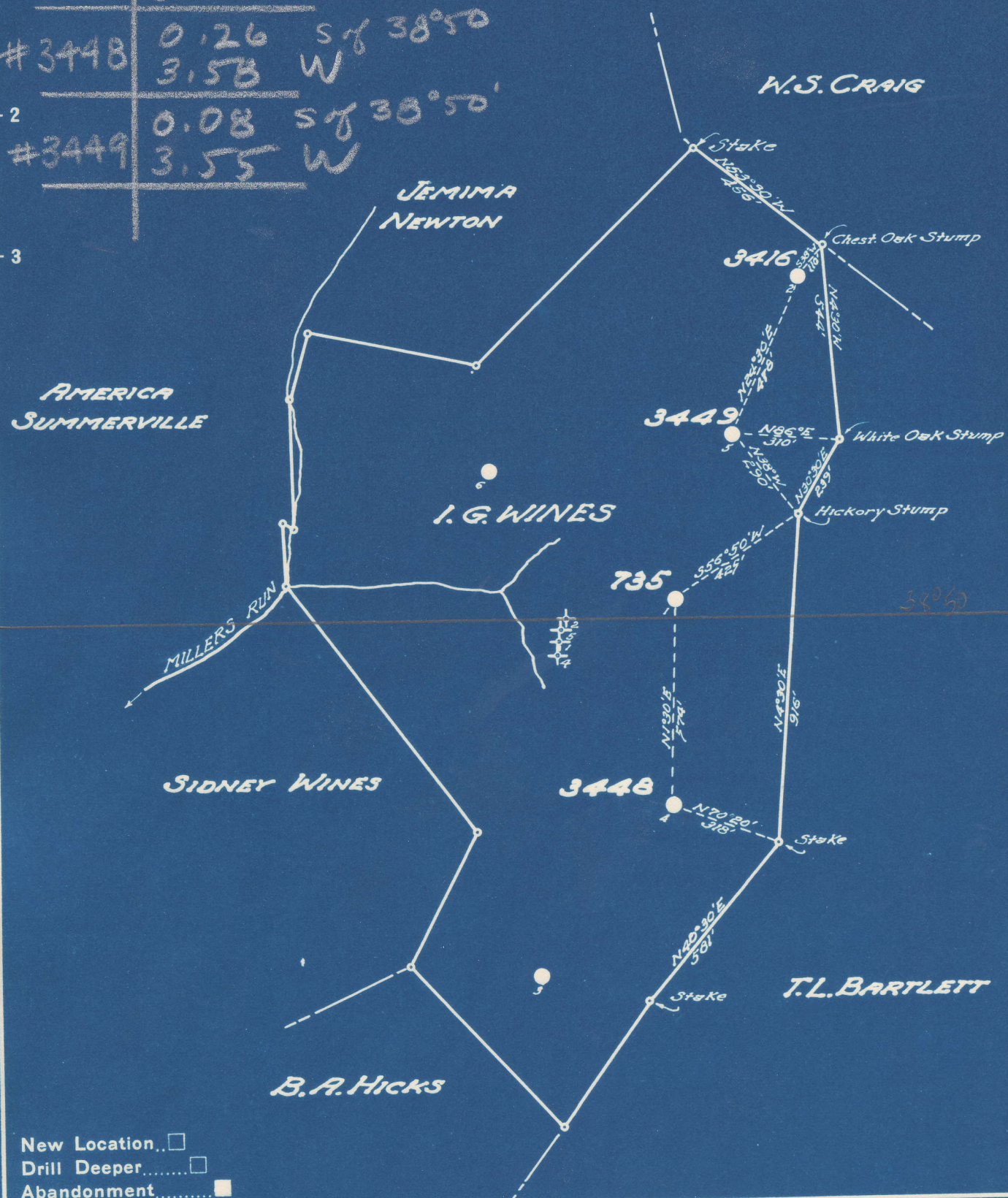


Latitude 38° 55'

Longitude 81° 15'

#735	0.16	S of 38° 50'
	3.57	W
#3416	0.005	S of 38° 50'
	3.51	W
#3448	0.26	S of 38° 50'
	3.53	W
#3449	0.08	S of 38° 50'
	3.55	W



New Location   
 Drill Deeper   
 Abandonment

Company UNITED FUEL GAS CO.  
 Address CHARLESTON, W.VA.  
 Farm I.G. WINES  
 Tract \_\_\_\_\_ Acres 56 Lease No. 1895  
 Well (Farm) No. 1, 2, 4, 5 Serial No. 3448-735  
 Elevation (Spirit Level) 1-1000, 4-999, 5-1036  
 Quadrangle SPENCER  
 County ROANE District SPENCER  
 Engineer J.H. Moore SE  
 Engineer's Registration No. 662  
 File No. 78-91 Drawing No. \_\_\_\_\_  
 Date 3-7-49 Scale 1" = 400'

STATE OF WEST VIRGINIA  
 DEPARTMENT OF MINES  
 OIL AND GAS DIVISION  
 CHARLESTON

*See microfilm for Well Records*

**WELL LOCATION MAP**  
 ROA-636-A-#735  
 FILE NO. ROA-637-A-#3416  
 ROA-638-A-#3448  
 ROA-639-A-#3449

+ Denotes location of well on United States Topographic Maps, scale 1 to 62,500, latitude and longitude lines being represented by border lines as shown.

- Denotes one inch spaces on border line of original tracing.