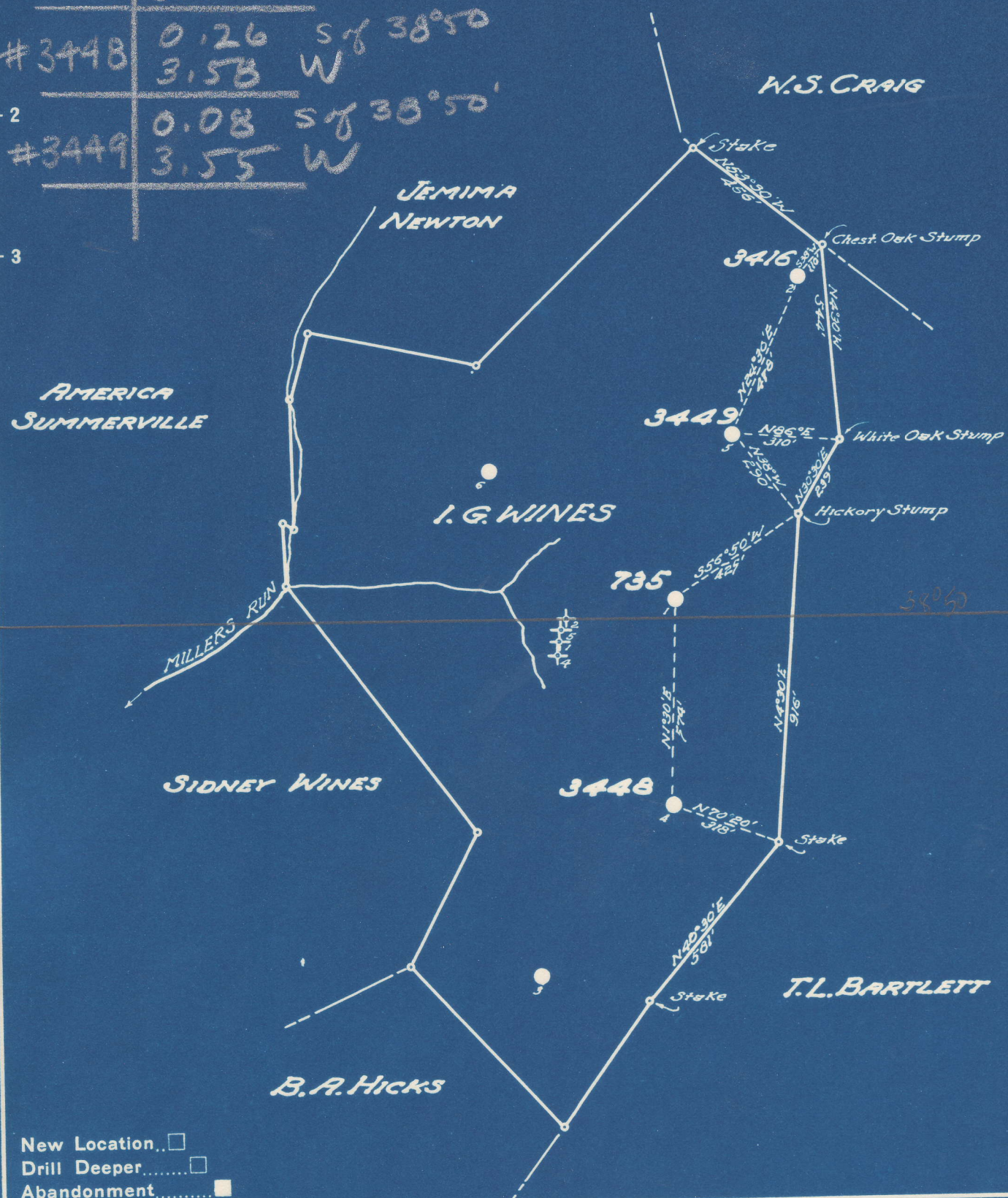


Latitude 38° 55'

Longitude 81° 15'

#735	0.16	S of	38° 50'
	3.57	W	
#3416	0.005	S of	38° 50'
	3.51	W	
#3448	0.26	S of	38° 50'
	3.53	W	
#3449	0.08	S of	38° 50'
	3.55	W	



New Location
 Drill Deeper
 Abandonment

Company UNITED FUEL GAS CO.
 Address CHARLESTON, W.VA.
 Farm I.G. WINES
 Tract _____ Acres 56 Lease No. 1895
 Well (Farm) No. 1, 2, 4, 5 Serial No. 3448-735
 Elevation (Spirit Level) 1-1000, 4-999, 5-1036
 Quadrangle SPENCER
 County ROANE District SPENCER
 Engineer J.H. Moore SE
 Engineer's Registration No. 662
 File No. 78-91 Drawing No. _____
 Date 3-7-49 Scale 1" = 400'

STATE OF WEST VIRGINIA
 DEPARTMENT OF MINES
 OIL AND GAS DIVISION
 CHARLESTON

See microfilm for Well Records

WELL LOCATION MAP
 ROA-636-A-#735
 FILE NO. ROA-637-A-#3416
 ROA-638-A-#3448
 ROA-639-A-#3449

+ Denotes location of well on United States Topographic Maps, scale 1 to 62,500, latitude and longitude lines being represented by border lines as shown.

- Denotes one inch spaces on border line of original tracing.