

0

1

2

3

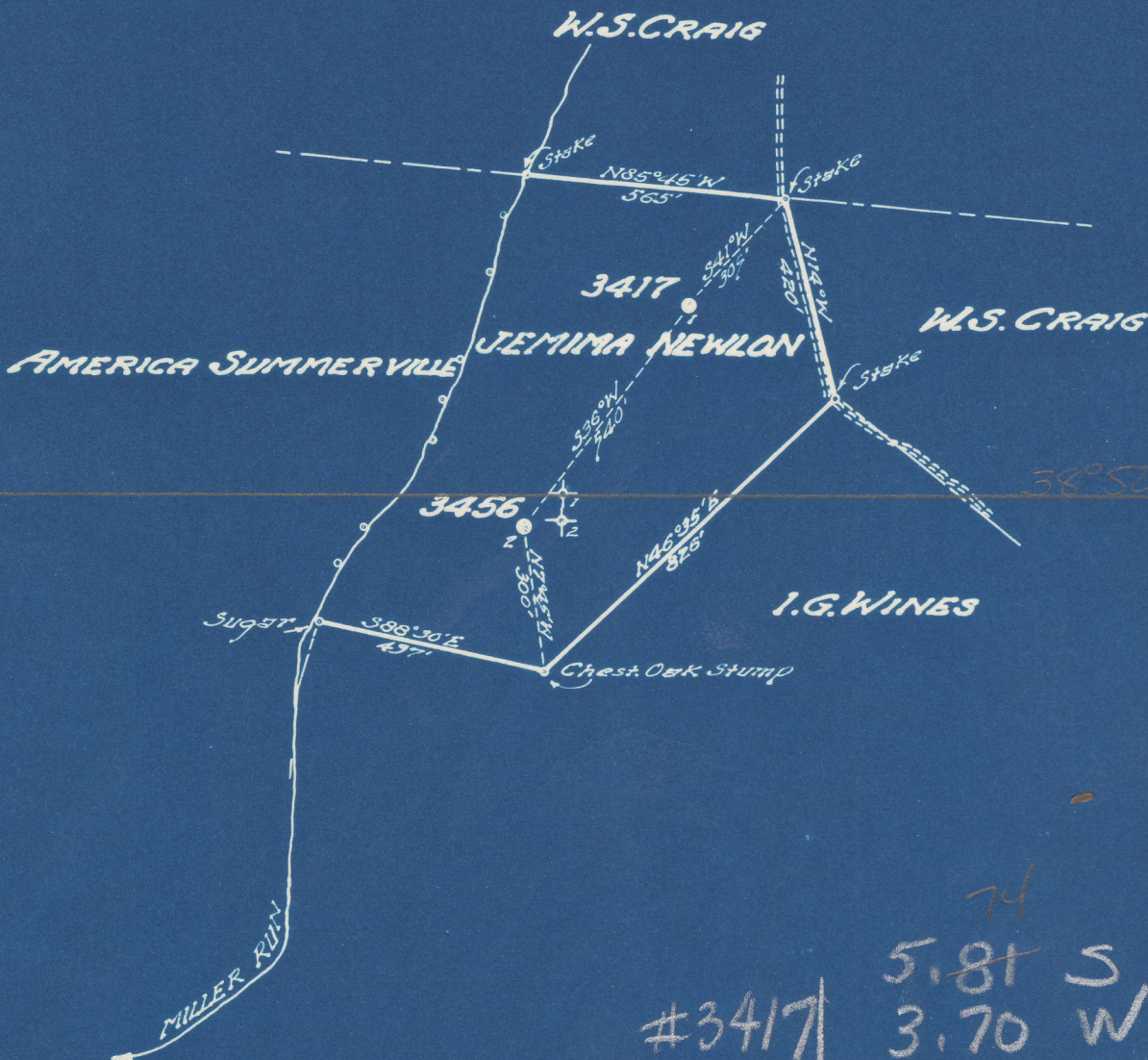
Latitude 38° 55'

1

2

3

Longitude 81° 15'



#3417	5.81 S	3.70 W
#3456	0.13 S of 38°50'	3.70 W

New Location   
 Drill Deeper   
 Abandonment

Company UNITED FUEL GAS CO.  
 Address CHARLESTON, W.VA.  
 Farm JEMIMA NEWLON  
 Tract \_\_\_\_\_ Acres 15 Lease No. 27236  
 Well (Farm) No. 1, 2 Serial No. 3417  
 Elevation (Spirit Level) 1-1045, 2-1006  
 Quadrangle SPENCER  
 County ROANE District SPENCER  
 Engineer J.H. MOORE  
 Engineer's Registration No. 662  
 File No. 78-91 Drawing No. \_\_\_\_\_  
 Date 3-7-49 Scale 1" = 400

STATE OF WEST VIRGINIA  
 DEPARTMENT OF MINES  
 OIL AND GAS DIVISION  
 CHARLESTON  
*see microfilm for well records*  
**WELL LOCATION MAP**  
 FILE NO. ROA - 631-A-#3417  
ROA - 632-A-#3456  
 Denotes location of well on United States Topographic Maps, scale 1 to 62,500, latitude and longitude lines being represented by border lines as shown.  
 — Denotes one inch spaces on border line of original tracing.

J. NEWLON NO. 1 WELL.

631A

Spencer District, Boone County, W. Va.  
By Ohio Fuel Oil Co.  
On 15 1/8 acres.  
Keller Map 1-22.  
Elevation.....  
Completed.....  
Oil well.  
From Heck's notes.

	Top.	Bottom.
Big Injun Sand (oil)	2195	<del>2214</del> - 2211.
Total depth		2214

632A

J. NEWLON NO. 2 WELL.

	Top.	Bottom.
Big Injun Sand (oil, probably B.I.; check)	2157	....
Total depth		2171