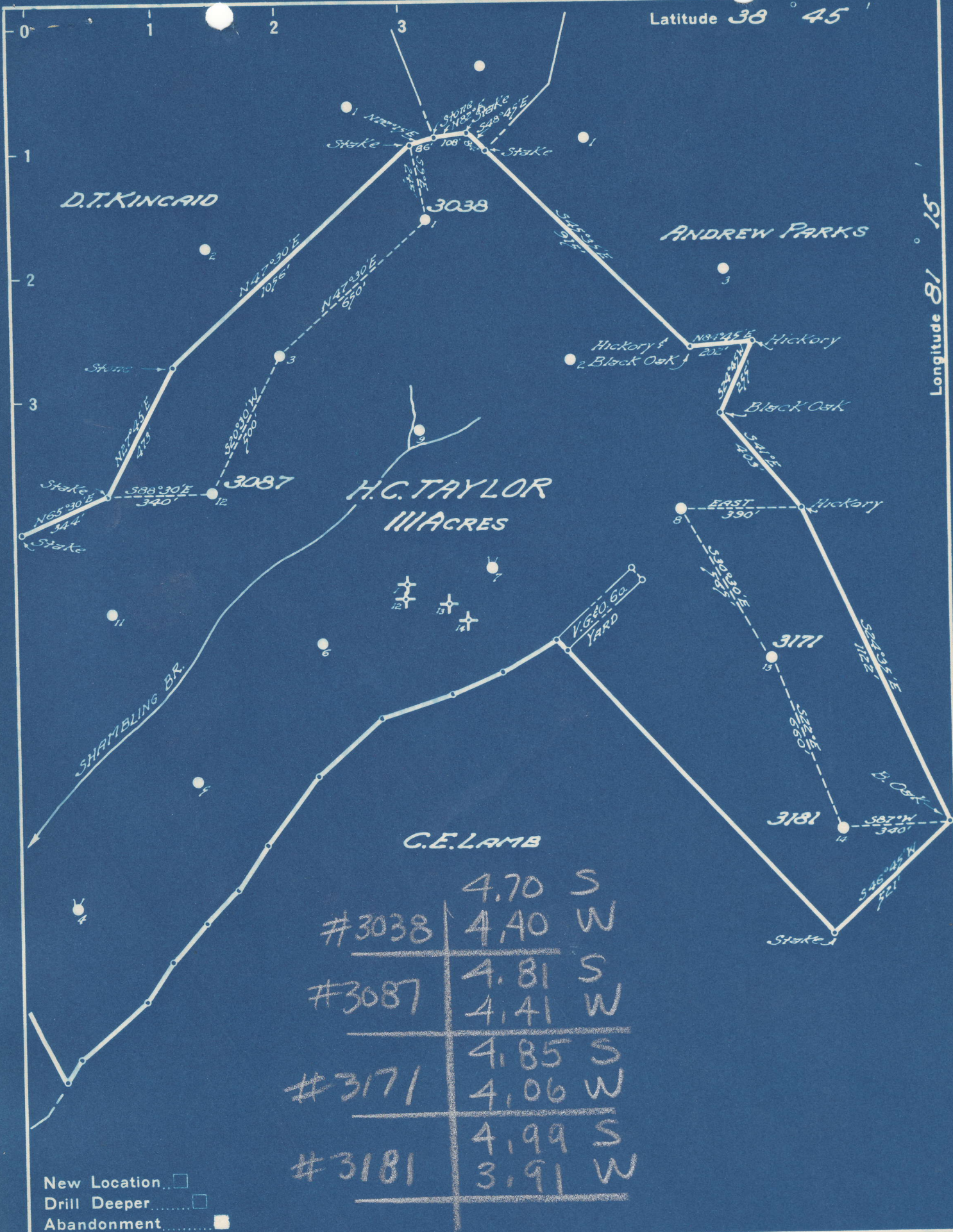


Latitude 38 45

Longitude 81 15



New Location
 Drill Deeper
 Abandonment

Company UNITED FUEL GAS CO.
 Address CHARLESTON, W.VA.
 Farm H.C. TAYLOR
 Tract _____ Acres 111 Lease No. 1793
 Well (Farm) No. 12, 13, 14 Serial No. 3171 3181
 Elevation (Spirit Level) 1-1134 13-933
12-878 14-858
 Quadrangle WALTON
 County ROANE District SMITHFIELD
 Engineer J.M. Moore
 Engineer's Registration No. 662
 File No. 78-81 Drawing No. _____
 Date 3-5-49 Scale 1"=400'

STATE OF WEST VIRGINIA
 DEPARTMENT OF MINES
 OIL AND GAS DIVISION
 CHARLESTON

WELL LOCATION MAP
 ROA-607-A-#3038
 FILE NO. ROA-608-A-#3087
 ROA-609-A-#3171
 ROA-610-A-#3181
 + Denotes location of well on United States Topographic Maps, scale 1 to 62,500, latitude and longitude lines being represented by border lines as shown.

- Denotes one inch spaces on border line of original tracing.

O & G Div An. Rpt, Table 6, 1949

Roane 607A comp. 1913 oil well TD 2229
 608A comp. 1914 oil well TD 2058
 609A comp. 1915 oil well TD 1989
 610A comp. 1915 oil well TD 1912

87-30610

No. 2

Ohio Fuel Oil Co. Sheet # 9676
COMPLETION

SERIAL No. _____ FARM H.C. Taylor WELL No. 14

ELEVATION 858 N. _____ S. 52 E. _____ W. 40-1

CONTRACTOR _____ ACRES _____ MAP No. _____

WATERS OF _____

DISTRICT Smithfield COUNTY Roane STATE W. Va.

DRILLING COMMENCED 5/10/1915 COMPLETED 6/16/15 DEPTH 1915-1912

SANDS	TOP	BOTTOM	ELEV. TOP	CASING
<u>Little Dunk</u>	<u>480</u>	<u>510</u>		
<u>Big Dunk</u>	<u>680</u>	<u>790</u>		
<u>Salt sand</u>	<u>1430</u>	<u>1704</u>		
<u>Little lime</u>	<u>1704</u>	<u>1747</u>		
<u>Pencil cave</u>	<u>1747</u>	<u>1757</u>		
<u>Big Lime</u>	<u>1759</u>	<u>1873</u>		
<u>BI</u>	<u>1873</u>	<u>1906</u>		

PGH. COAL OR BIG LIME _____

PACKERS AND DEPTH SET _____

INITIAL PROD. Est. 15 Bbls. @ 3) SAND Injun DEPTH No Rec.

GAS TEST _____ QUARTS _____

SHOT 6/16/15 QUARTS _____

REMARKS See microfilm for well record

REPORTED BY Poca District ABANDONED _____

STATE OF WEST VIRGINIA
 DEPARTMENT OF MINES
 OIL AND GAS DIVISION
 CHARLESTON

WELL LOCATION MAP

Denotes location of well on United States Topographic Maps, scaled to 62,500, lat. and longitude lines being represented by dotted lines as shown.

Denotes one-half blocks on better line of original location.

Denotes location of well on United States Topographic Maps, scaled to 62,500, lat. and longitude lines being represented by dotted lines as shown.

FILE NO. 607A-608A-609A-610A

UNITED FUEL GAS CO.
 CHARLESTON, W. VA.
 CONTRACTOR
 Lease No. 1123
 Well (Farm) No. 14
 Elevation (Smithfield) 858
 County Roane
 Engineer See
 Registration No. See
 District No. See

6-6 (196) (all 4)