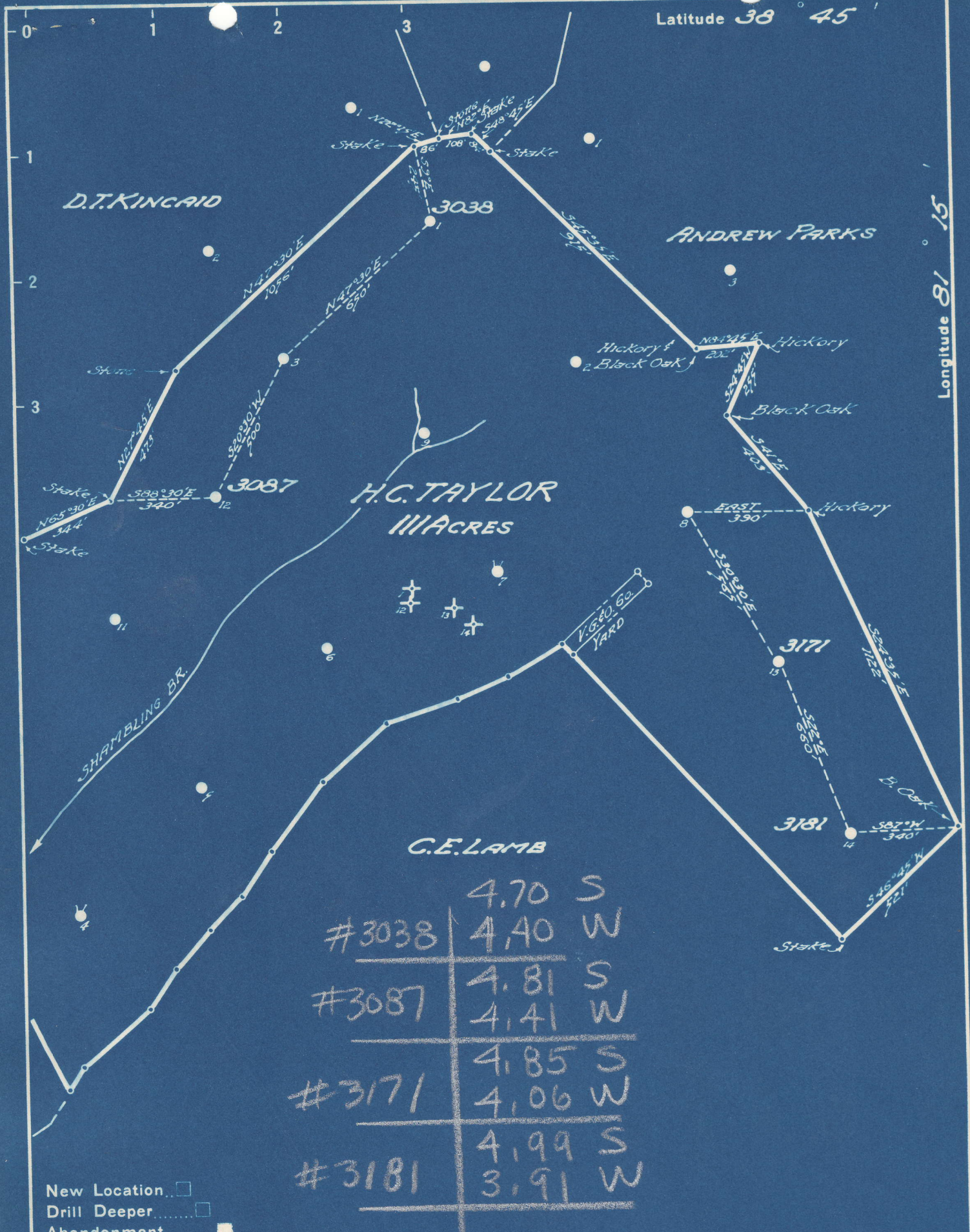


Latitude 38 45

Longitude 81 15



	4.70	S
#3038	4.40	W
#3087	4.81	S
	4.41	W
#3171	4.85	S
	4.06	W
#3181	4.99	S
	3.91	W

Company UNITED FUEL GAS CO.  
 Address CHARLESTON, W.VA.  
 Farm H.C. TAYLOR  
 Tract \_\_\_\_\_ Acres 111 Lease No. 1793  
 Well (Farm) No. 12, 13, 14 Serial No. 3171 3181  
 Elevation (Spirit Level) 1-1194 12-878 13-933 14-858  
 Quadrangle WALTON  
 County ROANE District SMITHFIELD  
 Engineer J.M. Moore  
 Engineer's Registration No. 662  
 File No. 78-81 Drawing No. \_\_\_\_\_  
 Date 3-5-49 Scale 1"=400'

STATE OF WEST VIRGINIA  
 DEPARTMENT OF MINES  
 OIL AND GAS DIVISION  
 CHARLESTON

**WELL LOCATION MAP**  
 ROA-607-A-#3038  
 FILE NO. ROA-608-A-#3087  
 ROA-609-A-#3171  
 ROA-610-A-#3181

+ Denotes location of well on United States Topographic Maps, scale 1 to 62,500, latitude and longitude lines being represented by border lines as shown.

- Denotes one inch spaces on border line of original tracing.

6-6 1196

O & G Div An. Rpt, Table 6, 1949

Roane 607A comp. 1913 oil well TD 2229  
 608A comp. 1914 oil well TD 2058  
 609A comp. 1915 oil well TD 1989  
 610A comp. 1915 oil well TD 1912

87-30607

Sheet #6665

No. 2 Ohio Fuel Oil Co. COMPLETION

SERIAL NO. 2038 FARM H.C. Taylor WELL No. 1

ELEVATION 1134 N. 52 S. 41 E. 41 W. 41

CONTRACTOR \_\_\_\_\_ ACRES \_\_\_\_\_

WATERS OF \_\_\_\_\_

DISTRICT Smithfield COUNTY Roane STATE W. Va.

DRILLING COMMENCED 4/11/1913 COMPLETED 5/28/13 DEPTH 2229

SANDS	TOP	BOTTOM	ELEV. TOP	CASING
<del>PGR. COAL OR BIG LIME</del>				
Salt sand	1740	2025		
Little lime	2025	2065		
Pencil cave	2065	2070		
Big lime	2070	2180		
BI	2180	2227		

PACKERS AND DEPTH SET \_\_\_\_\_

INITIAL PROD. Est. 20 Bbl. SAND Injun DEPTH No Rec.

GAS TEST \_\_\_\_\_ " \_\_\_\_\_ " \_\_\_\_\_

SHOT 5/29/1913 QUARTS \_\_\_\_\_ " \_\_\_\_\_ " \_\_\_\_\_

REMARKS See microfilm for Well Record

REPORTED BY poca district ABANDONED \_\_\_\_\_

WELLS LOCATION MAP  
 This map shows the location of wells on United States  
 Topographic Maps, scale 1 to 62,500, lat-  
 itude and longitude lines being represented  
 by dotted lines as shown.  
 - Denotes one or more places on border line  
 of original location.  
 + Denotes location of well on United States  
 Topographic Maps, scale 1 to 62,500, lat-  
 itude and longitude lines being represented  
 by dotted lines as shown.  
 FILE NO. 607A-1913  
 ROANE COUNTY, WEST VIRGINIA  
 DATE 5/29/1913

6-6 (196) (all 4)