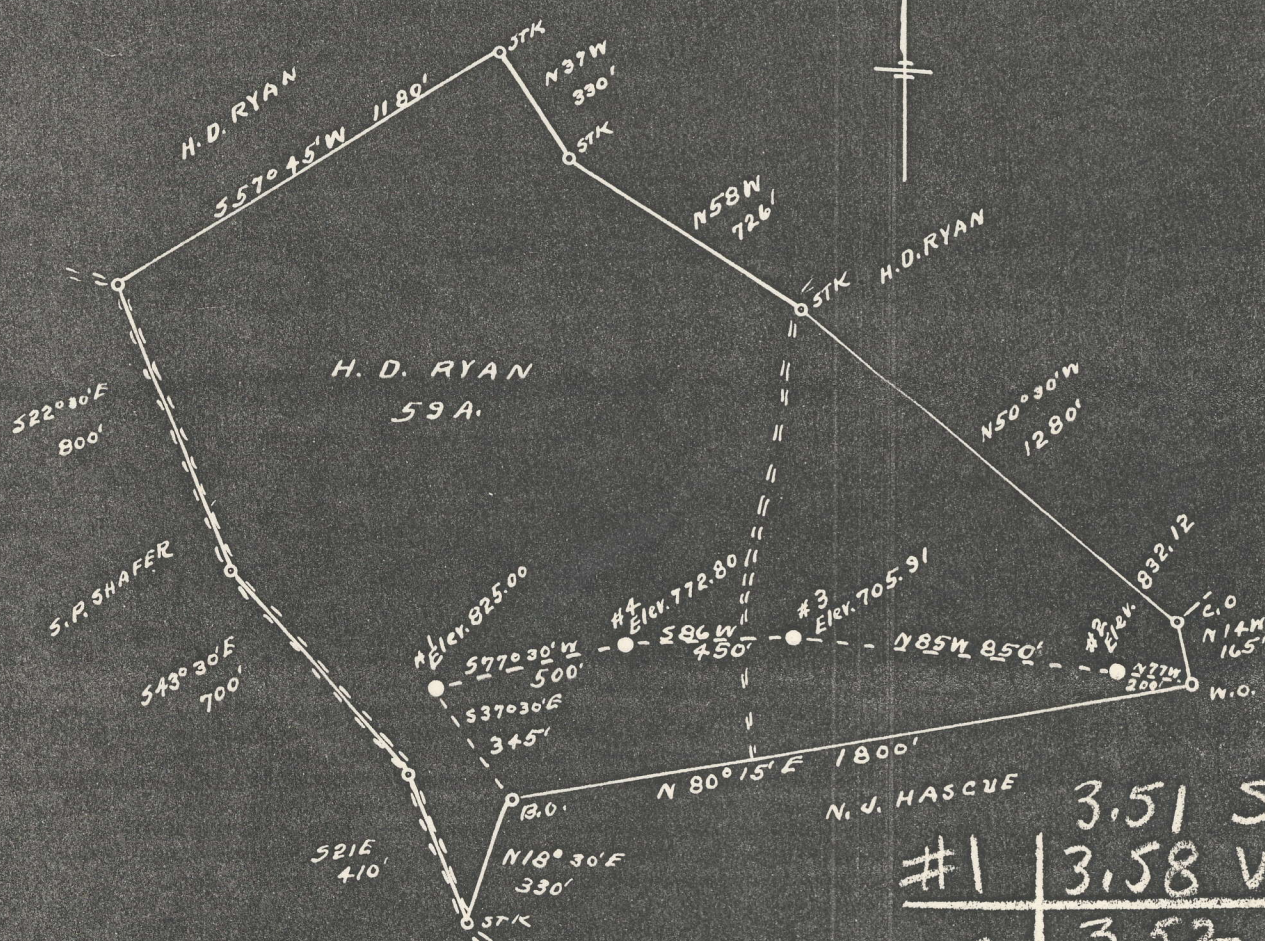


Latitude 38° 40'

Longitude 81° 20'



	3.51 S
#1	3.58 W
#2	3.52 S 3.47 W
#3	3.47 S 3.49 W
#4	3.48 S 3.52 W

New Location...
 Drill Deeper...
 Abandonment...

Company FARTHING SUPPLY CO.
 Address SHAWNEE, OKLA.
 Farm H. D. RYAN
 Tract _____ Acres 59 Lease No. _____
 Well (Farm) No. 51-2-3-4 Serial No. _____
 Elevation (Spirit Level) SEE ABOVE
 Quadrangle WALTON
 County ROANE District WALTON
 Engineer L. F. Dye
 Engineer's Registration No. 804
 File No. _____ Drawing No. _____
 Date 1-17-49 Scale 1" = 500'

STATE OF WEST VIRGINIA
 DEPARTMENT OF MINES
 OIL AND GAS DIVISION
 CHARLESTON

WELL LOCATION MAP
 ROA-599-A-#1
 FILE NO. ROA-600-A-#2
 ROA-601-A-#3
 ROA-602-A-#4

+ Denotes location of well on United States Topographic Maps, scale 1 to 62,500, latitude and longitude lines being represented by border lines as shown.
 - Denotes one inch spaces on border line of original tracing.

(196) (copy) →

RYAN, H. D., NO. 3.

Roa-601-A.

By Farthing Supply Co.

Walton Dist.

(ON BLUE PRINT PLAT 599-A)

see microfilm
for Well record

TD = 1927

371: 1887-1927