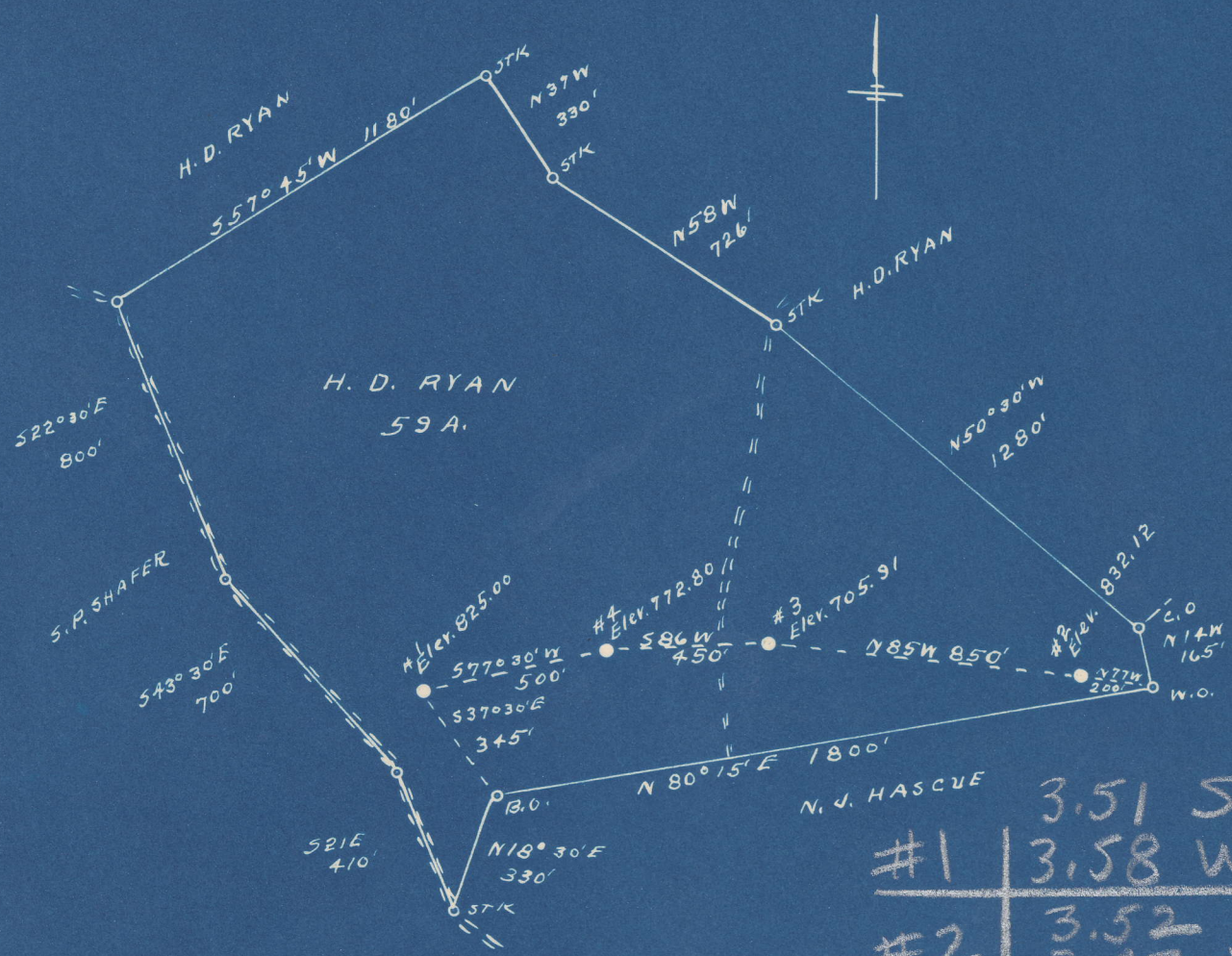


Latitude 38° 40'

Longitude 81° 20'



	3.51 S
#1	3.58 W
#2	3.52 S
	3.47 W
#3	3.47 S
	3.49 W
#4	3.48 S
	3.52 W

New Location   
 Drill Deeper   
 Abandonment

Company FARTHING SUPPLY CO.  
 Address SHAWNEE, OKLA.  
 Farm H. D. RYAN  
 Tract \_\_\_\_\_ Acres 59 Lease No. \_\_\_\_\_  
 Well (Farm) No. 51-2-3-4 Serial No. \_\_\_\_\_  
 Elevation (Spirit Level) SEE ABOVE  
 Quadrangle WALTON  
 County ROANE District WALTON  
 Engineer L. F. Dye  
 Engineer's Registration No. 804  
 File No. \_\_\_\_\_ Drawing No. \_\_\_\_\_  
 Date 1-17-49 Scale 1" = 500'

STATE OF WEST VIRGINIA  
 DEPARTMENT OF MINES  
 OIL AND GAS DIVISION  
 CHARLESTON

*See microfiche for well record*

**WELL LOCATION MAP**  
 ROA-599-A-#1  
 FILE NO. ROA-600-A-#2  
 ROA-601-A-#3  
 ROA-602-A-#4

+ Denotes location of well on United States Topographic Maps, scale 1 to 62,500, latitude and longitude lines being represented by border lines as shown.

- Denotes one inch spaces on border line of original tracing.

0+G Div. Ann. Rept. 1949-Table 6  
 Roane 599A Oil well TD 2109'  
 600A Oil well TD 2118'  
 601A oil well TD 1927'  
 602A oil well TD 2078'



New Location  
 Drill Record  
 Abandonment

Company (Name)  
 Address  
 Town  
 State  
 Post Office  
 Well Farm No.  
 Section  
 Township  
 Range  
 District  
 Registration No.  
 Drawing No.

STATE OF WEST VIRGINIA  
 DEPARTMENT OF MINES  
 OIL AND GAS DIVISION  
 CHARLESTON

WELL LOCATION MAP

FILE NO. 599A  
 600A  
 601A  
 602A

\* Denotes location of well on United States Topographic Map, scale 1 to 62,500. Leds and landline lines being represented by dotted lines as shown.

- Denotes one inch square on grid (top of original drawing)

6-6 (196)