

38° 37' 30"

Latitude

210 57' 30"

Longitude

7 1/2 loc

Topo Location

7.5' Loc. 2.68 S 15' Loc. 5.56 S
0.90 W (calc.) 3.15 W

Company _____

Farm C M Robbins 57

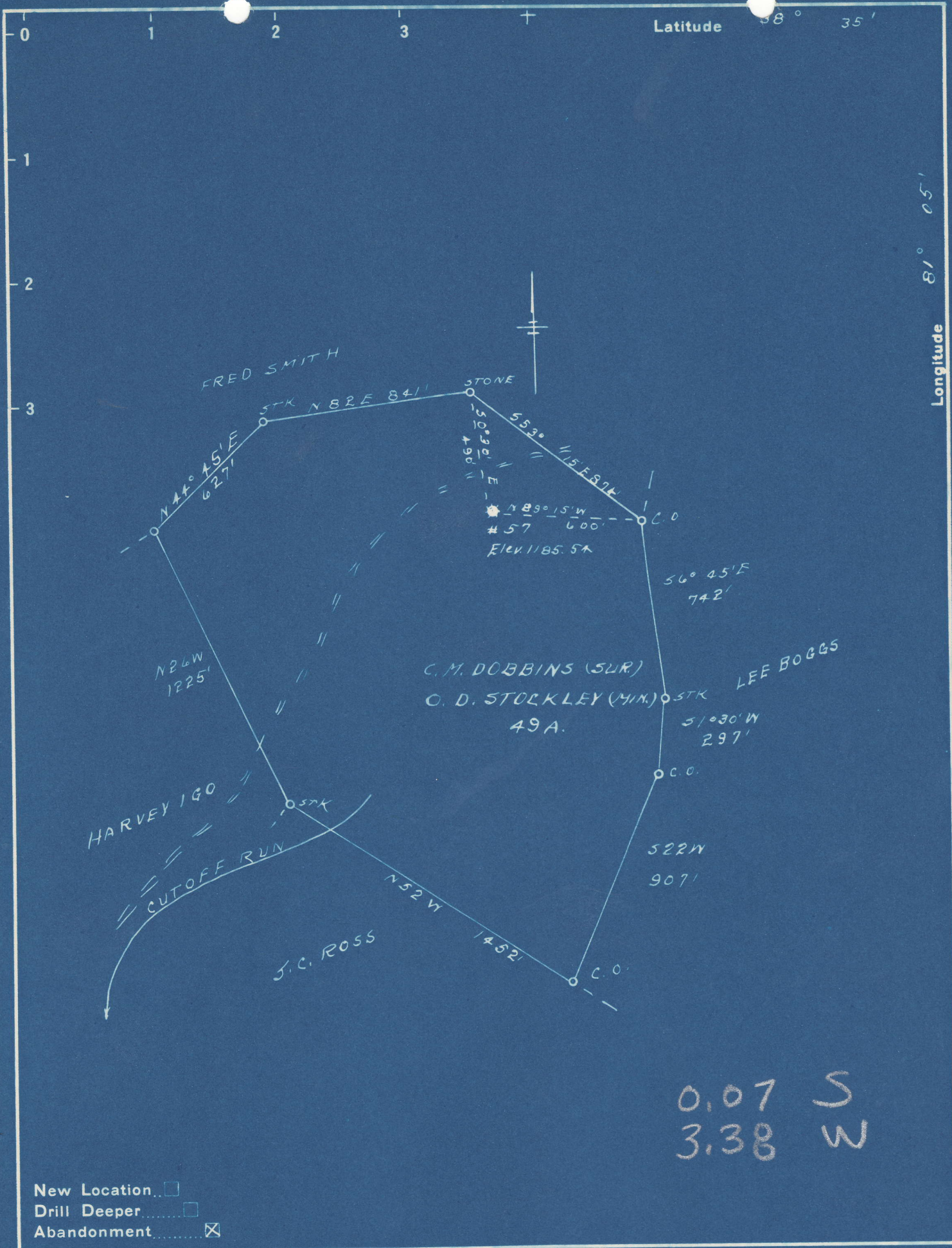
15' Quad Otter
(sec.) _____

7.5' Quad Newton

District _____

WELL LOCATION PLAT

County 87 Permit 30596



0.07 S
3.38 W

New Location
 Drill Deeper
 Abandonment

Company S.G. LIMING SPECIAL
 Address CHENDENNIN, W.VA.
C.M. DOBBINS (SUR)
O.D. STOCKLEY (MIN.)
 Farm _____
 Tract _____ Acres 49 Lease No. _____
 Well (Farm) No. 57 Serial No. _____
 Elevation (Spirit Level) 1185.54
 Quadrangle OTTER
 County ROANE District GEARY
 Engineer L.F. Dyer
 Engineer's Registration No. 804
 File No. _____ Drawing No. _____
 Date 11-24-48 Scale 1" = 500'

STATE OF WEST VIRGINIA
 DEPARTMENT OF MINES
 OIL AND GAS DIVISION
 CHARLESTON

See microfilm for well record
WELL LOCATION MAP
 FILE NO. ROA-596-A

+ Denotes location of well on United States Topographic Maps, scale 1 to 62,500, latitude and longitude lines being represented by border lines as shown.
 - Denotes one inch spaces on border line of original tracing.