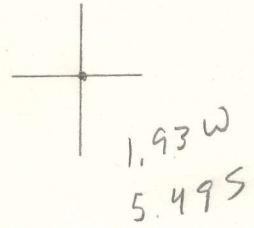


LATITUDE 38° 45'

LONGITUDE 81° 10'



7'5 OGIS topo location

7.5' loc _____ 15' loc _____
 _____ (calc.) _____

Company _____

Farm _____

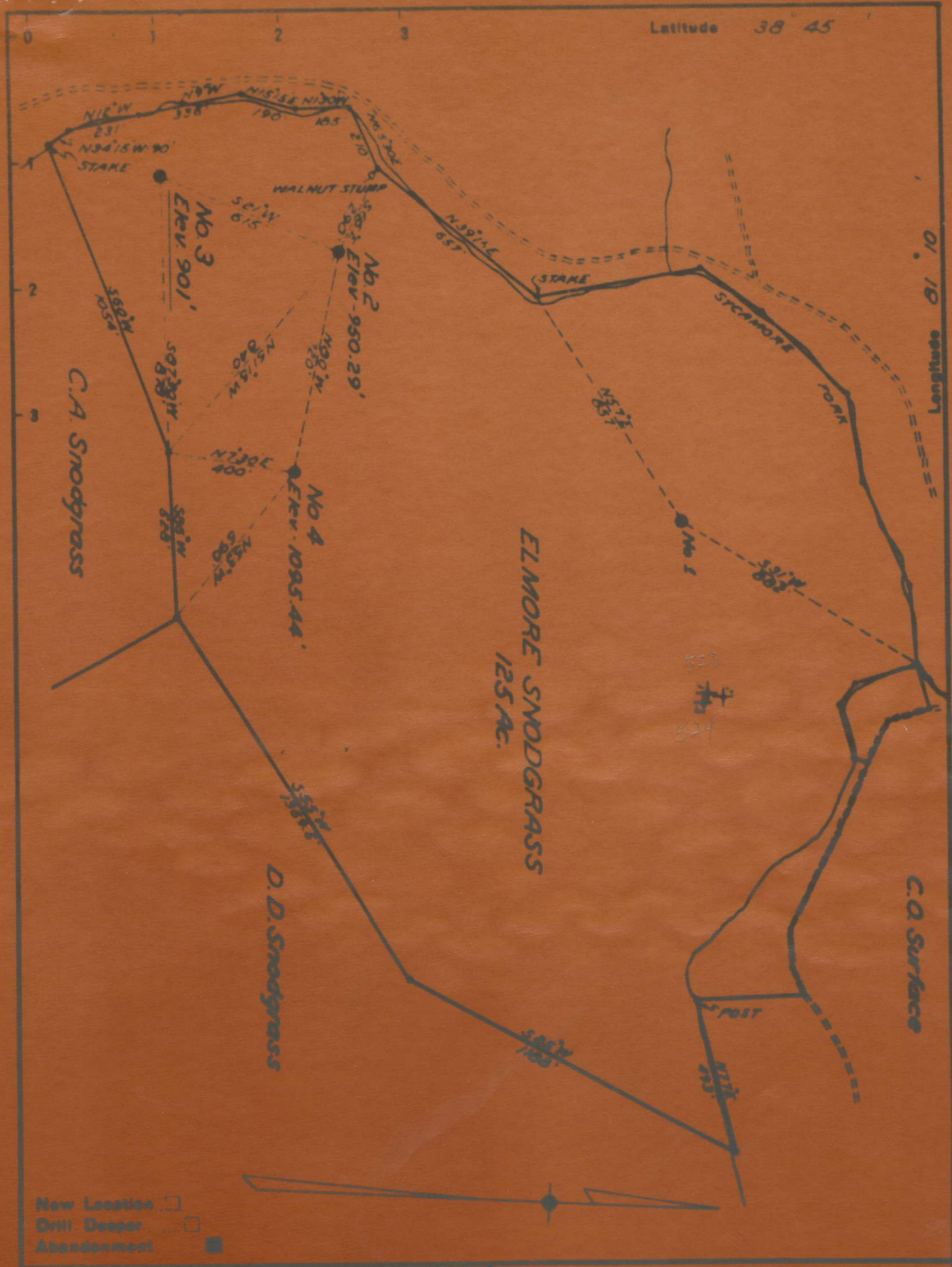
Quad Otter (NW)

County Roane

District Smithfield

WELL LOCATION MAP

File No. 087 - 523A



Company UNITED FUEL GAS CO.
 Address CHARLESTON, W.VA.
 Field ELMORE SNODGRASS
 Tract Area 125 Lease No.

STATE OF WEST VIRGINIA
 DEPARTMENT OF MINES
 OIL AND GAS DIVISION
 CHARLESTON

SNODGRASS, ELMORE, NO. 3.

Roa-523-A.

By United Fuel Gas Co.

Smithfield Dist.

See microfilm
for well record & plot