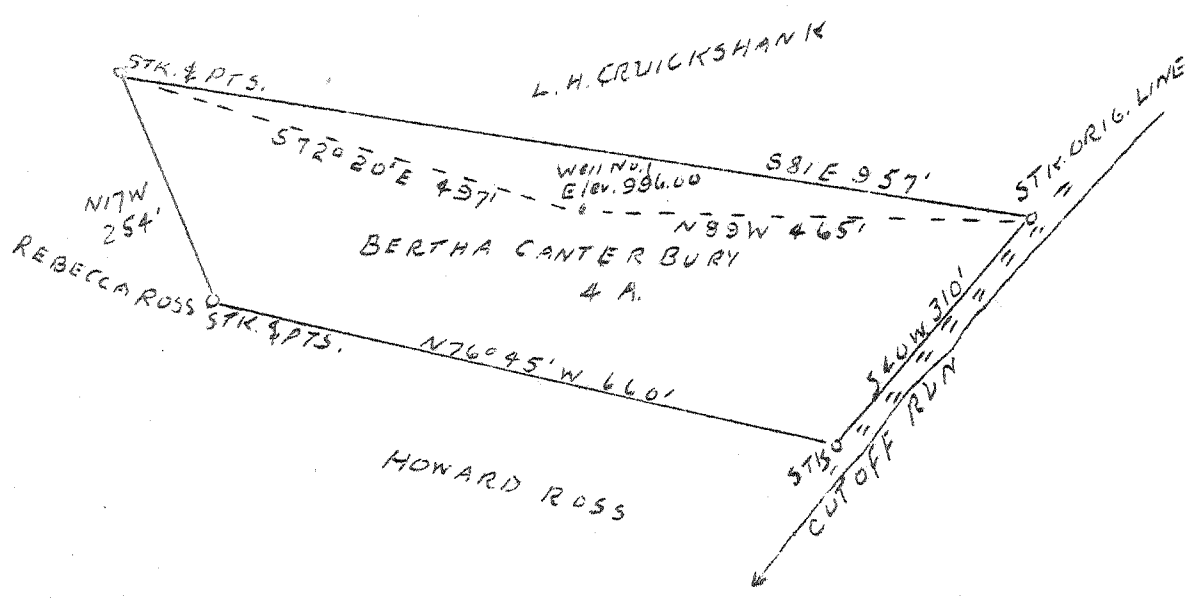


Latitude 38° 35'

0.20 S
3.56 W

Longitude 81° 05'



NEW LOCATION
DRILL DEEPER
ABANDONMENT X

COMPANY	PET OIL COMPANY
ADDRESS	SPENCER, W. VA.
FARM	BERTHA CANTERBURY
TRACT	ACRES 4 LEASE NO.
WELL (FARM) NO.	1 SERIAL NO.
ELEVATION (SPIRIT LEVEL)	996.00
QUADRANGLE	OTTER
COUNTY	ROANE DISTRICT GEARY
ENGINEER	L. F. DYE
ENGINEER'S REGISTRATION NO.	804
FILE NO.	DRAWING NO.
DATE	8-19-47 SCALE 1" = 200'

STATE OF WEST VIRGINIA
DEPARTMENT OF MINES
OIL AND GAS DIVISION
CHARLESTON

WELL LOCATION MAP
FILE No. ROA-473-A

+ DENOTES LOCATION OF WELL ON UNITED STATES TOPOGRAPHIC MAPS, SCALE 1 TO 62,500, LATITUDE AND LONGITUDE LINES BEING REPRESENTED BY BORDER LINES AS SHOWN.

- DENOTES ONE INCH SPACES ON BORDER LINE OF ORIGINAL TRACING.