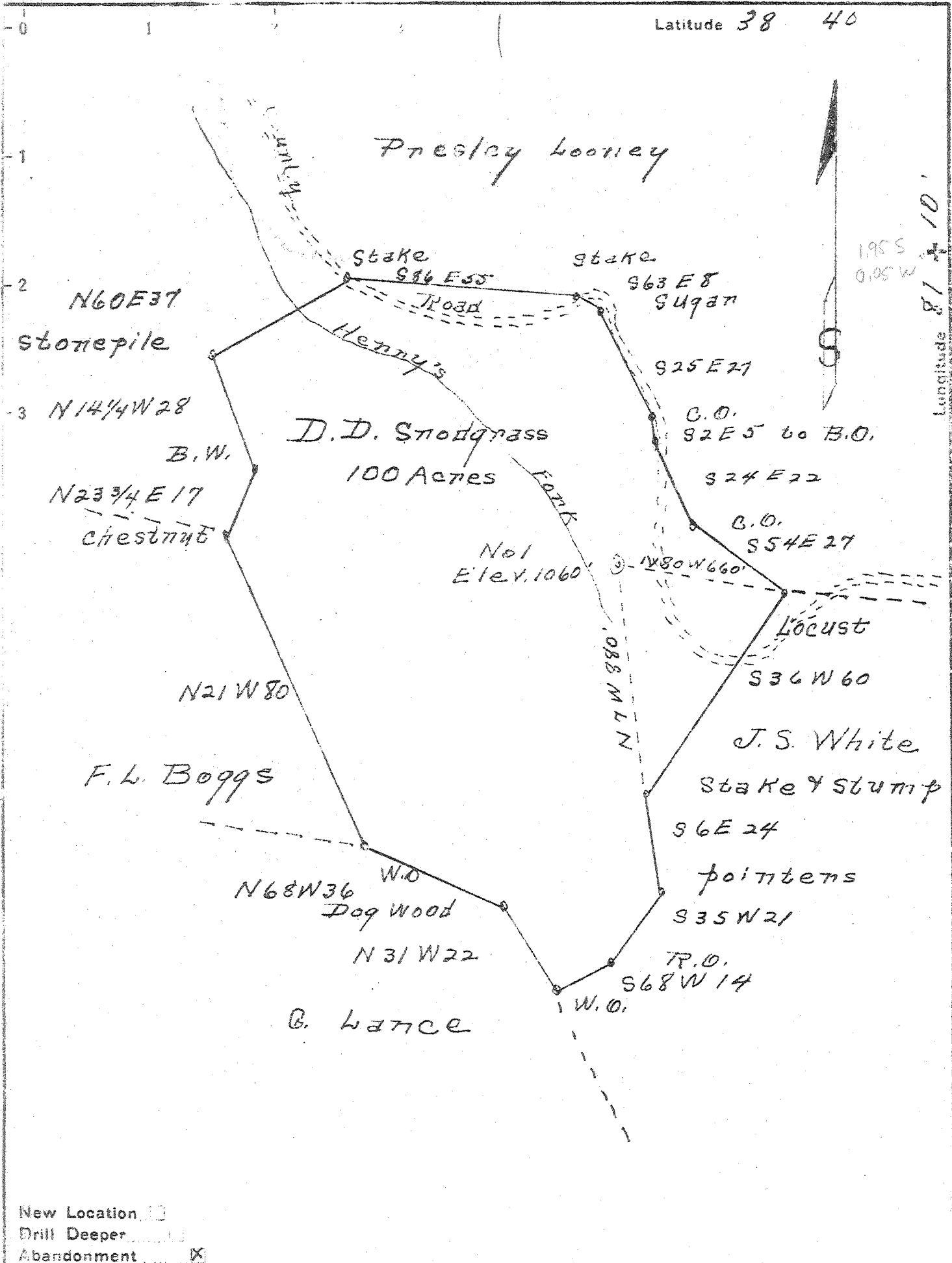


Latitude 38 40



- New Location
- Drill Deeper
- Abandonment

Company Southeastern Gas Co
 Address Charleston, W. Va.
 Farm D. D. Stodgrass
 Tract _____ Acres 100 Lease No. 2308
 Well (Farm) No. 1 Serial No. 734
 Elevation (Spirit Level) 1060'
 Quadrangle Obter
 County Boone District Smithfield
 Engineer Casey Neeter
 Engineer's Registration No. _____
 File No. _____ Drawing No. _____
 Date 6-12-47 Scale 1" = 30 poles

STATE OF WEST VIRGINIA
 DEPARTMENT OF MINES
 OIL AND GAS DIVISION
 CHARLESTON

see microfilm for well record
WELL LOCATION MAP
 FILE NO. ROA-468-A

- + Denotes location of well on United States Topographic Maps, scale 1 to 62,500, latitude and longitude lines being represented by border lines as shown.
- Denotes one inch spaces on border line of original tracing.