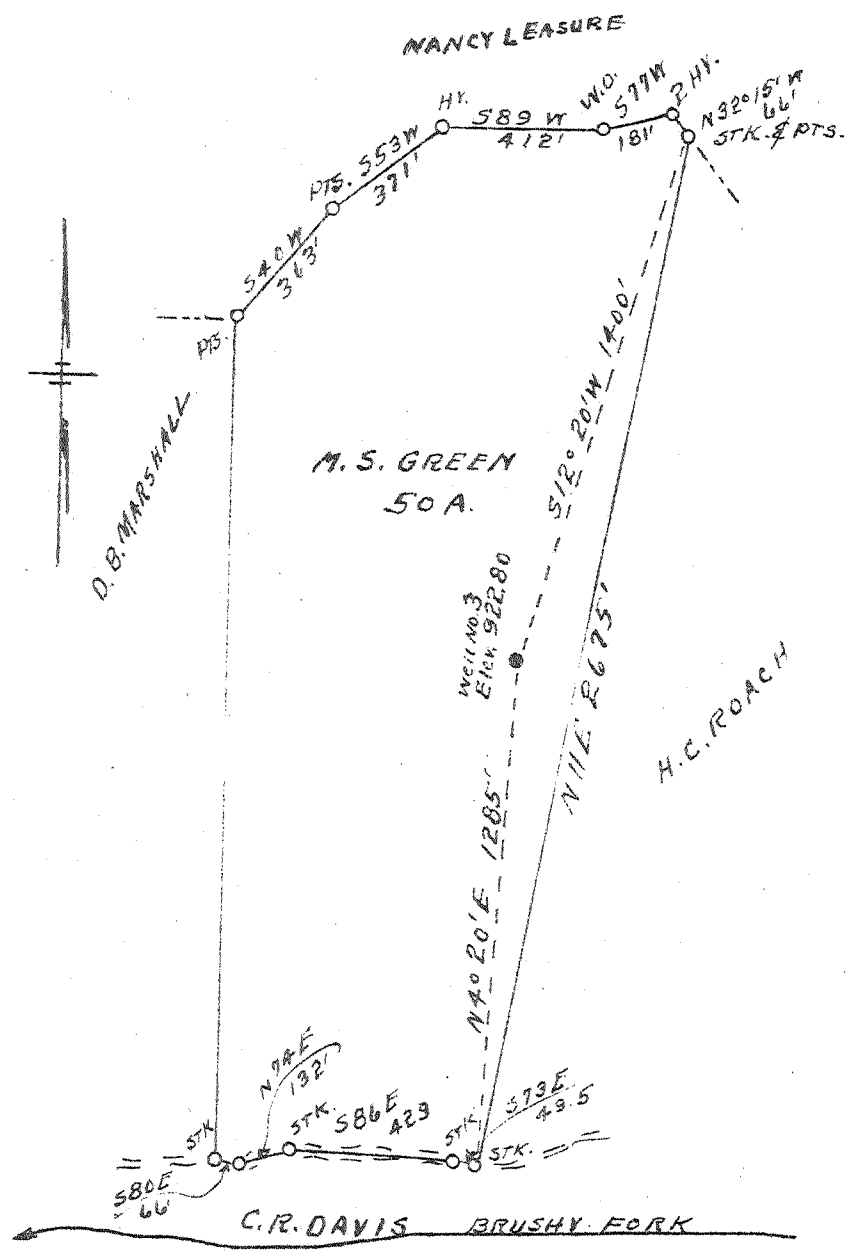


Latitude 38° 55'

1275
+091W

Longitude 81° 30'



New Location

Drill Deeper

Abandonment

Company PAUL K. WEEKLEY

Address SPENCER, W.VA.

Farm M.S. GREEN

Tract _____ Acres 50 Lease No. _____

Well (Farm) No. 3 Serial No. _____

Elevation (Spirit Level) 922.80

Quadrangle RIPLEY

County ROANE District REEDY

Engineer L. F. Dye

Engineer's Registration No. 804

File No. _____ Drawing No. _____

Date 11-20-46 Scale 1" = 500'

STATE OF WEST VIRGINIA
DEPARTMENT OF MINES
OIL AND GAS DIVISION
CHARLESTON

See Microfilm for complete well record

WELL LOCATION MAP

FILE NO. ROA-465-A

+ Denotes location of well on United States Topographic Maps, scale 1 to 62,500, latitude and longitude lines being represented by border lines as shown.

- Denotes one inch spaces on border line of original tracing.