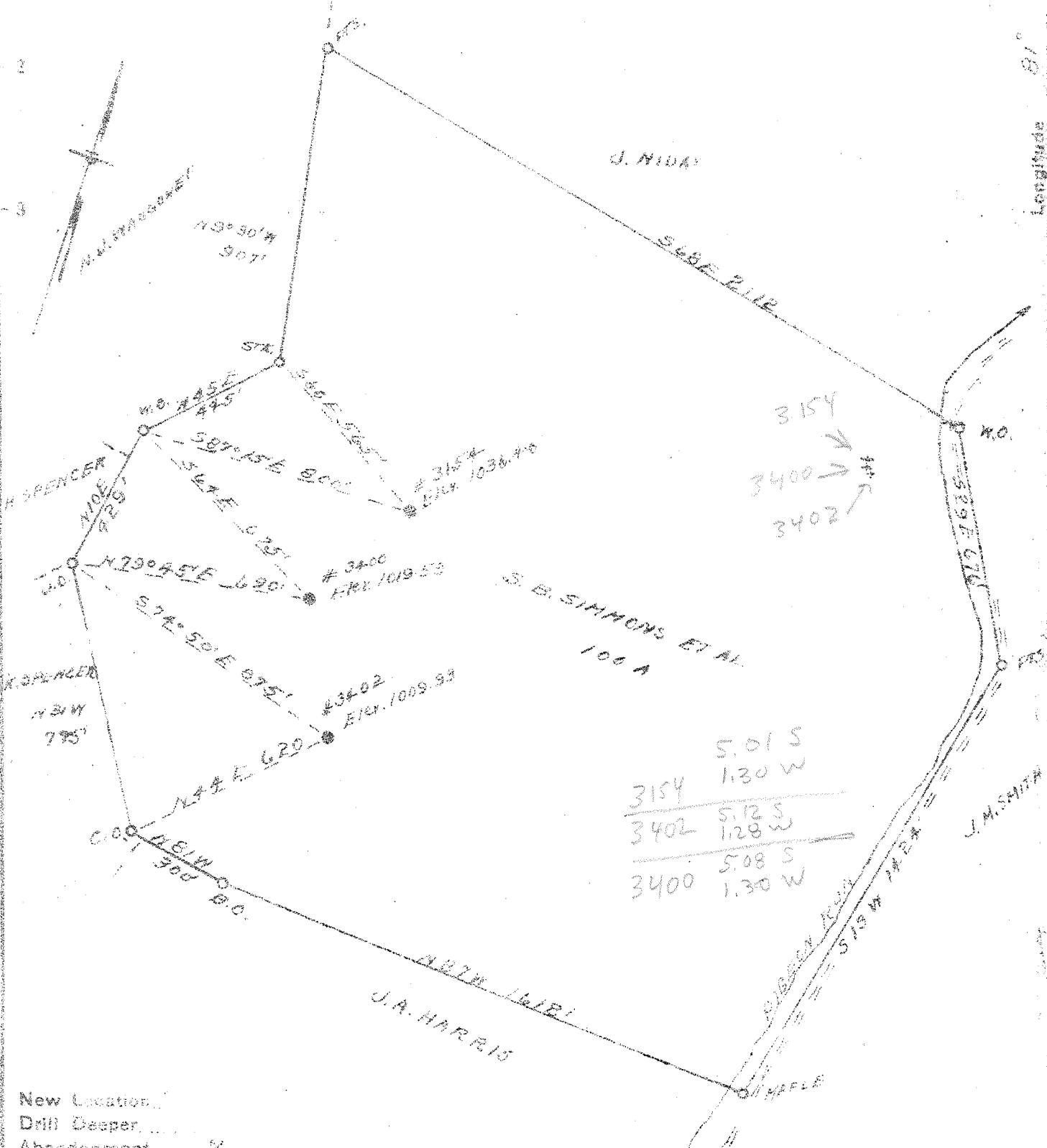


Latitude 38° 56'

Longitude 81° 15'



3154	5.01 S
	1.30 W
3402	5.12 S
	1.28 W
3400	5.08 S
	1.30 W

New Location
 Drill Deeper
 Abandonment

Company YARBY HILDRETH
 Address SPENCER, W.VA.
 Farm S. B. SIMMONS ET AL.
 Tract _____ Acres 100 Lease No. _____
 Well (Farm) No. _____ Serial No. 3154-3400
3402
 Elevation (Spirit Level) 3400-1019.53
1036.40 # 3400-1019.53
3402-1009.93
 Quadrangle SPENCER
 County ROANE District SPENCER
 Engineer R. H. Day
 Engineer's Registration No. 802
 File No. _____ Drawing No. _____
 Scale 1" = 400'

STATE OF WEST VIRGINIA
 DEPARTMENT OF MINES
 OIL AND GAS DIVISION
 CHARLESTON

See microfilm for well records
WELL LOCATION MAP
 FILE NO. ROA-447-A; No. 3154
ROA-448-A; No. 3402; ROA-449-A; No. 3400

+ Denotes location of well on United States Topographic Maps, scale 1 to 62,500, latitude and longitude lines being represented by border lines as shown.
 - Denotes one inch spaces on border line of original tracing.