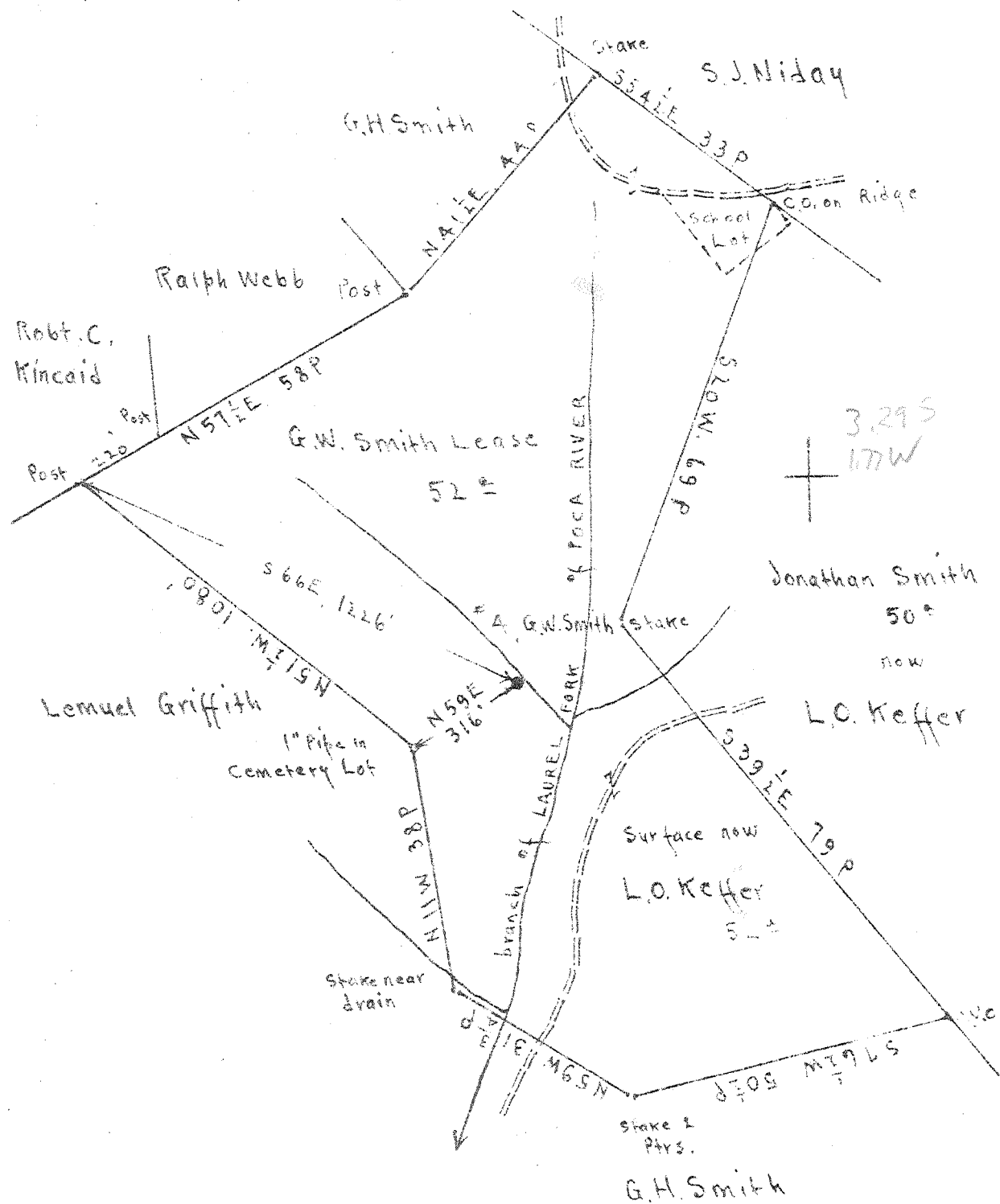


Latitude 38 45

Longitude 81 15

Scale 1" = 400'



No Coal.

Surface: L.O. Keffer.  
Clover, Roane Co., W. Va.

New Location...  
Drill Deeper...  
Abandonment... X

Company Road Supply Co.  
 Address Salem, W. Va.  
 Farm G. W. Smith  
 Tract Acres 51<sup>2</sup> Lease No. \_\_\_\_\_  
 Well (Farm) No. 4 Serial No. \_\_\_\_\_  
 Elevation (Spirit Level) Floor 949.07  
 Ground 946.07  
 Quadrangle Walton NE  
 County Roane District Smithfield  
 Engineer E. C. Tabler  
 Engineer's Registration No. \_\_\_\_\_  
 File No. \_\_\_\_\_ Drawing No. \_\_\_\_\_  
 Date July 13<sup>th</sup> 1946 Scale 1" = 400'

STATE OF WEST VIRGINIA  
DEPARTMENT OF MINES  
OIL AND GAS DIVISION  
CHARLESTON

WELL LOCATION MAP  
FILE NO. ROA-437-A

+ Denotes location of well on United States Topographic Maps, scale 1 to 62,500, latitude and longitude lines being represented by border lines as shown.

- Denotes one inch spaces on border line of original tracing.



STATE OF WEST VIRGINIA  
DEPARTMENT OF MINES  
OIL AND GAS DIVISION

366

WELL RECORD

Permit No. 437-A

Oil or Gas Well X

Company Road Supply Company  
Address 184 East Main St., Salem, W. Va.  
Farm G. W. Smith Acres 52  
Location (waters) Br. of Laurel Fork  
Well No. 4 Elev. 946.07  
District Smithfield County Roane  
The surface of tract is owned in fee by L. O. Keffner  
Address Clover, W. Va.  
Mineral rights are owned by NO COAL.  
Address \_\_\_\_\_

Drilling commenced \_\_\_\_\_  
Drilling completed December 2, 1911  
Date Shot \_\_\_\_\_ From \_\_\_\_\_ To \_\_\_\_\_  
With \_\_\_\_\_

Open Flow \_\_\_\_\_ /10ths Water in \_\_\_\_\_ Inch  
\_\_\_\_\_ /10ths Merc. in \_\_\_\_\_ Inch  
Volume \_\_\_\_\_ Cu. Ft.  
Rock Pressure \_\_\_\_\_ lbs. \_\_\_\_\_ hrs.  
Oil \_\_\_\_\_ bbls., 1st 24 hrs.  
Fresh water \_\_\_\_\_ feet \_\_\_\_\_ feet  
Salt water \_\_\_\_\_ feet \_\_\_\_\_ feet

Casing and Tubing	Used in Drilling	Left in Well	Packers
Size			
16			Kind of Packer _____
13			Size of _____
10			Depth set _____
8 1/4			Perf. top _____
6 1/2	<u>1821</u>	<u>1821</u>	Perf. bottom _____
5 3/16			Perf. top _____
3			Perf. bottom _____
2	<u>1960</u>	<u>1960</u>	
Liners Used _____			

CASING CEMENTED \_\_\_\_\_ SIZE \_\_\_\_\_ No. Ft. \_\_\_\_\_ Date \_\_\_\_\_

COAL WAS ENCOUNTERED AT None FEET \_\_\_\_\_ INCHES  
\_\_\_\_\_ FEET \_\_\_\_\_ INCHES  
\_\_\_\_\_ FEET \_\_\_\_\_ INCHES

Formation	Color	Hard or Soft	Top	Bottom	Oil, Gas or Water	Depth Found	Remarks
Conductor				16			
Big Dunkard			745	835			
Salt Sand			1447	1746			
Water			1485	1526	Water		
Little Lime			1746	1782			
Pencil			1782	1790			
Big Lime			1790	1918			
Water			1841		Water		
Big Injun			1918	1965			
Gas			1919		Gas		
Oil			1953		Oil		
Total Depth				1965			

