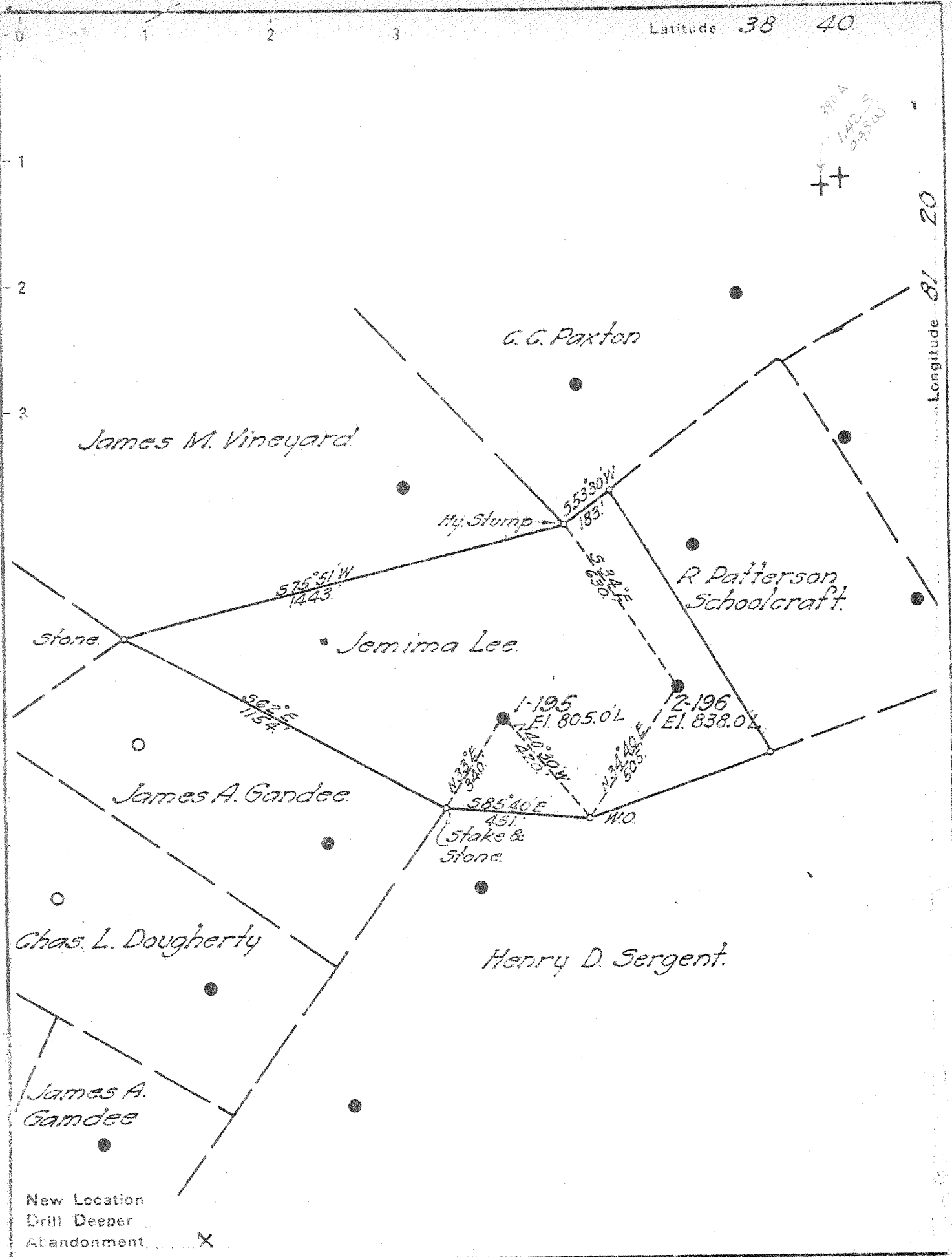


Latitude 38 40

Longitude 81 20



New Location  
 Drill Deeper  
 Abandonment X

Company SUPERIOR PIPE & SUPPLY CO.  
 Address GRAND RAPIDS, MICHIGAN.  
 Farm JEMIMA LEE  
 Tract \_\_\_\_\_ Acres 25 Lease No. \_\_\_\_\_  
 Well (Farm) No. 1 Serial No. 1-195  
 Elevation (Spirit Level) 805  
 Quadrangle WALTON  
 County ROANE District WALTON  
 Engineer W. H. Minnigram  
 Engineer's Registration No. 659  
 File No. 76-79 Drawing No. \_\_\_\_\_  
 Date OCT. 6, 1944 Scale 1" = 400'

STATE OF WEST VIRGINIA  
 DEPARTMENT OF MINES  
 OIL AND GAS DIVISION  
 CHARLESTON

WELL LOCATION MAP  
 FILE NO. ROA-390-A

+ Denotes location of well on United States Topographic Maps, scale 1 to 62,500, latitude and longitude lines being represented by border lines as shown.  
 --- Denotes one inch spaces on border line of original tracing

OHIO FUEL OIL CO.  
**UNITED FUEL GAS COMPANY** UFG. 2775  
 O.F.O. 195  
 Map 541. 76-79

Lease No.

RECORD of Well No. # *1-123* on *Jessima Lee* Farm Acres *25*  
 Field *Millen* District *Pratt* County *4*  
 Rig Commenced *Sept-26* 19*10* Completed *Oct. 4* 19*10*  
 Drilling Commenced *Oct-6* 19*10* Completed *Nov-17* 19*10*  
 Cost per foot, Contractor *Pratt Rig Co.* Address *Charleston*  
 Drillers' Names *E. J. Hurst & G. R. Bruce Duncan*

CONDUCTOR AND CASING USED IN DRILLING

Conductor	13 Inch	10 Inch	8 1/2 Inch	8 Inch	7 1/2 Inch	6 3/4 Inch	6 1/2 Inch	5 1/2 Inch	5 1/4 Inch	4 1/2 Inch
<i>16'</i>		<i>290</i>		<i>360</i>		<i>1757</i>				

CONDUCTOR AND CASING LEFT IN WELL

Conductor	13 Inch	10 Inch	8 1/2 Inch	8 Inch	7 1/2 Inch	6 3/4 Inch	6 1/2 Inch	5 1/2 Inch	5 1/4 Inch	4 1/2 Inch
<i>16'</i>						<i>1757</i>				

OIL WELL

GAS WELL

When Shot	Size of Torpedo	1st Days Production	Tubing	Rods	Size of Packer	Depth Set	Tubing	1st Minute Pressure	Rock Pressure
<i>Nov. 16 4 o'clock</i>		<i>17-13</i>							

FORMATION TOP BOTTOM THICKNESS REMARKS

Conductor		<i>16'</i>			
Red Brk. Slate L	<i>16</i>	<i>94</i>	<i>75</i>		
Sand Red Brk	<i>74</i>	<i>769</i>	<i>175</i>		
Sand Lime	<i>269</i>	<i>429</i>	<i>160</i>		
Red Brk. fine Sand	<i>429</i>	<i>614</i>	<i>185</i>		
Little Runhard	<i>614</i>	<i>724</i>	<i>110</i>		
Slate Lime	<i>724</i>	<i>744</i>	<i>20</i>		
Big Runhard	<i>744</i>	<i>929</i>	<i>185</i>		
Lime Shells & Slate	<i>929</i>	<i>1319</i>	<i>460</i>		
Salt Sand	<i>1359</i>				
Water	<i>1494</i>				
Little Lime	<i>1716</i>				
Big "	<i>1755</i>	<i>1457</i>	<i>107</i>		
Sand	<i>1857</i>	<i>1405</i>	<i>48</i>		
Bot Hole	<i>1908</i>				

*6 3/4" casing  
 threads 14'-8"*

*315*

*0*

*Elev. 805'*

*Log-390-A*

Examined and Approved by *E. H. Hauge* Foreman.

NOTE.—The above blank must be filled out carefully by the Contractor with a complete and accurate record of the Well and accompany, when presented for payment, the bill for drilling.  
 All formations and known sands must be given their proper name, and under head of "Remarks" must be reported in what sand and at what depth Oil, or Water was found, the quantity of same, the quality of the sand, and the thickness of pay.