

38° 37' 30"

81° 07' 30"

Latitude

Longitude

• 7 1/2' loc

Topo Location

7.5' Loc. 2.80 S 15' Loc. 5.68 S
0.70 W (calc.) 2.95 W

Company _____

Farm L D Boggs 4 (1951)

15' Quad Otter
(sec.) _____

7.5' Quad Newton

District _____

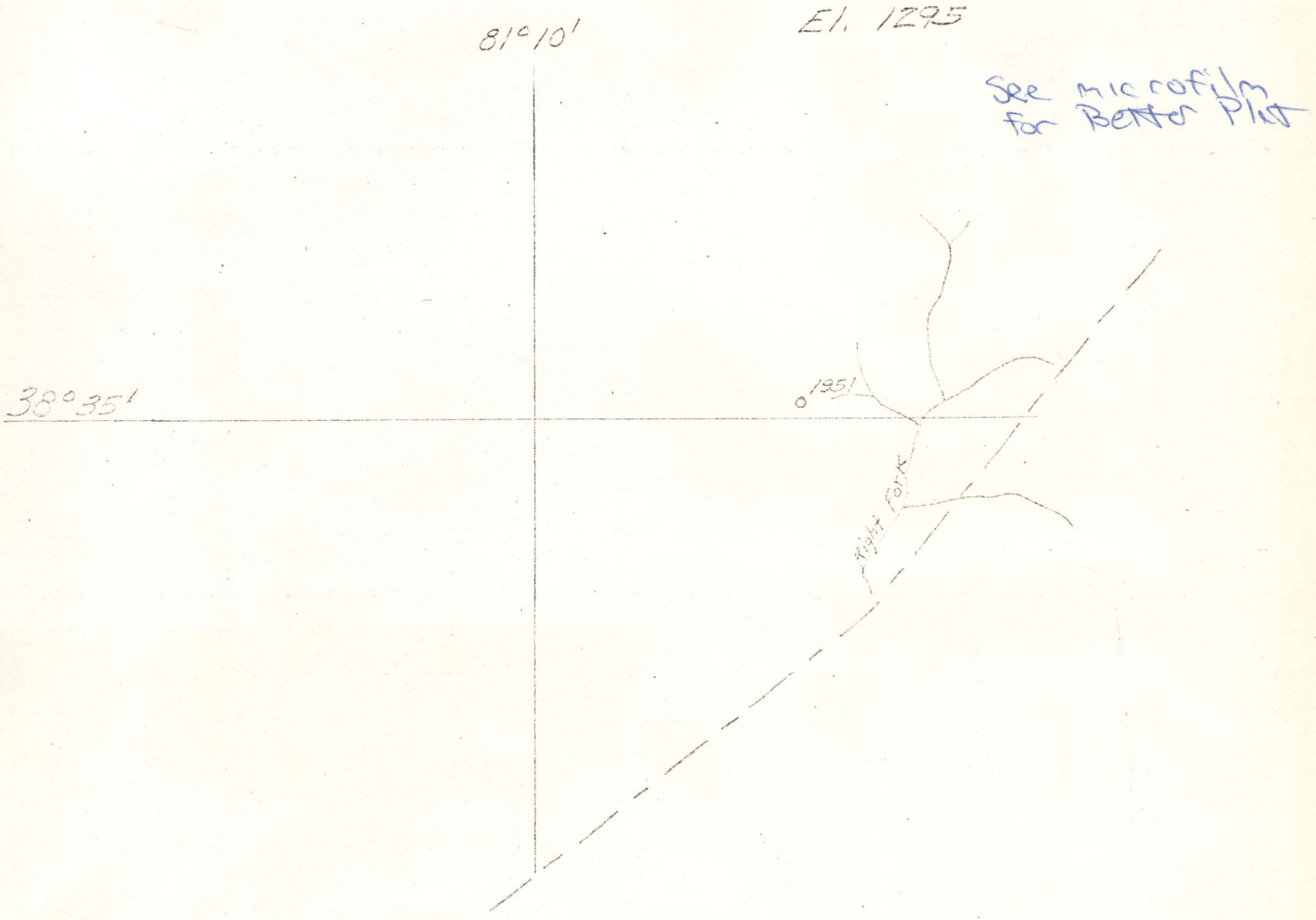
WELL LOCATION PLAT

County 87 Permit 389A

UNITED FUEL GAS COMPANY

OUTSIDE LOCATIONS

Location by Clendinning Field
United Fuel Gas Co., Well No. 1951
L. D. Boggs Farm, on waters of Right Fork of
Sandy Cr. Map Square _____
Geary District, Beane County, West Virginia
Scale 1/62500 Made _____, 192_____



No. _____

L. D. BOGGS NO. 4 (1951) WELL.

Geary District, Roane County, W. Va.
 By United Fuel Gas Co., Charleston, W. Va.
 On lease No. 19893; Map Sq. 88-75.
 Elevation.....' L.
 Rig commenced May 28, 1928; completed June 2, 1928.
 Drilling commenced June 28, 1928; completed Aug. 5, 1928.
 Drilling to cost \$1.75 per foot.
 Contractor: Ramsey & Thompson, Charleston, W. Va.
 Drillers: C. M. Ramsey, Buck Ward.
 8 1/4" casing, 577' (pulled); 6 3/8", 2096'; 2" tubing, 2295'.
 Shot Aug. 13, 1928; size of torpedo, 1 - 3 1/2 x 10, at 2247-2257'.
 Swabbed 30 bbls. 1st 24 hrs.; swabbed 34 bbls. 1st (2nd?) 24 hrs.
 Packer, 6 3/8 x 8 1/2 x 10, Parmaco, B. H. 6 3/8" casing run 2117'.
 Oil well. Abandonment record filed with Dept. of Mines Aug. 29, 1944.
 Record to RCT from Mrs. Griffith Sept. 21, 1944. Old File No. 302.

	Top.	Bottom.
Surface	0	10
Sand	10	95
Slate	95	164
Slate and red rock	164	403
Slate and shell	403	430
Slate and red rock	430	522
Sand	522	550
Slate and shell	550	570
Lime	570	600
Sand	600	820
Slate	820	825
Sand	825	950
Lime	950	991
Slate and shell	991	1050
Sand	1050	1135
Slate and shell	1135	1160
Lime	1160	1185
Slate and shell	1185	1296
Sand	1296	1392
Slate	1392	1524
Sand	1524	1558
Slate	1558	1565
Gas Sand	1565	1590
Slate	1590	1599
Salt Sand	1599	1975
Slate	1975	1985
Red rock	1985	1990
Maxton Sand	1990	2003
Slate and lime shell	2003	2035
Little Lime	2035	2062
Slate	2062	2066
Sand	2066	2091
Big Lime	2091	2231
Big Injun Sand (SLM)	(oil pay, 2245-2256', SIM)	2231 - 2258
Slate		2258 - 2273
Total depth (SIM)		2273

UNITED FUEL GAS COMPANY
(INCORPORATED)

SERIAL WELL NO. 1951

LEASE NO. 19893

MAP SQUARE 88-75

RECORD OF WELL No. 4 on the
L. D. Boggs. Farm of Acres
in Geary District
Roane, County
Clendenin. Field, State of W. Va.

CASING AND TUBING

TEST BEFORE SHOT

SIZE	USED IN DRILLING	LEFT IN WELL
16		
13		
10		
8 1-4	577'	None
6 5-8	2096'	2096'
5 3-16		
4 7-8		
4		
3		
2	2295'	2295'

.....of Water in..... inch
10ths
.....of Merc. in..... inch
10ths
Volume.....Cu. ft.

TEST AFTER SHOT

.....of Water in..... inch
10ths
.....of Merc. in..... inch
10ths
Volume.....Cu. ft.

Rig Commenced May 28, 1928.
Rig Completed June 2, 1928.
Drilling Commenced June 28, 1928.
Drilling Completed August 3, 1928.
Drilling to cost \$1.75 per foot
Contractor is: Ramsey & Thompson.
Address: Charleston, W. Va.

Rock Pressure.....
Date Shot 8-13-28
Size of Torpedo 1-3 1/2 x 10
Oil Pumped Swbd 30.....bbls. 1st 24 hrs.
Oil Pumped Swbd 34.....bbls. 1st 24 hrs.

Drillers' Names C. E. Ramsey.
Buck Ward.

SHUT IN
Date.....
.....in Tubing or Casing Well abandoned and
Size of Packer 6-5/8" x 8 1/2" x 10' Plugged.....19.....
Kind of Packer Parmaco, B. H.
1st Perf. Set.....from.....
2nd Perf. Set.....from.....

DRILLER'S RECORD

6-5/8" casing run 2117'

FORMATION	TOP	BOTTOM	THICKNESS	REMARKS
Surface.		10	10	Hole full water 1705.
Sand.	10	95	85	Oil pay. 2245-2256 S. Line.
Slate.	95	164	69	
Slate & Red Rock.	164	403	239	
Slate & Shell.	403	430	27	
Slate & Red Rock.	430	522	92	
Sand.	522	550	28	Top n Shot 2247'
Slate & Shell.	550	570	20	Bottom. 2257'
Lime.	570	600	30	
Sand.	600	820	220	
Slate.	820	828	5	
Sand.	825	950	125	
Lime.	950	991	41	
Slate & Shell.	991	1050	60	
Sand.	1050	1135	85	
Slate & Shell.	1135	1160	25	
Lime.	1160	1185	25	
Slate & Shell.	1185	1296	111	
Sand.	1296	1392	96	
Slate.	1392	1524	132	
Sand.	1524	1558	34	
Slate.	1558	1565	7	
Gas Sand.	1565	1590	25	
Slate.	1590	1599	9	
Salt Sand.	1599	1975	376	
Slate.	1975	1985	10	
Red Rock.	1985	1990	5	
Maxon Sand.	1990	2003	13	

Handwritten notes:
A circled 'O'
RA-389-A
A horizontal line

UNITED FUEL GAS COMPANY
(INCORPORATED)

352

SERIAL WELL No. 1951.

LEASE No. 19893

MAP SQUARE 88-75

RECORD OF WELL No.

on the

CASING AND TUBING

TEST BEFORE SHOT

Farm of

Acres

SIZE

USED IN DRILLING

LEFT IN WELL

in

District

16

.....of Water in..... inch

10ths

.....of Merc. in..... inch

10ths

Volume.....Cu. ft.

Field, State of

13

10

TEST AFTER SHOT

.....of Water in..... inch

10ths

.....of Merc. in..... inch

10ths

Volume.....Cu. ft.

Rig Commenced

192

6 5-8

Rig Completed

192

5 3-16

Drilling Commenced

192

4 7-8

Drilling Completed

192

4

Rock Pressure.....

Drilling to cost

per foot

3

Date Shot.....

Contractor is:

2

Size of Torpedo.....

Address:

SHUT IN

Oil Flowed.....bbls. 1st 24 hrs.

Oil Pumped.....bbls. 1st 24 hrs.

Date.....

Drillers' Names

.....in

Tubing or Casing

Well abandoned and

Size of Packer.....

Plugged.....19.....

Kind of Packer.....

1st Perf. Set.....from.....

2nd Perf. Set.....from.....

DRILLER'S RECORD

FORMATION

TOP

BOTTOM

THICKNESS

REMARKS

Slate & Lime Shell.

2003

2035

32

Little Lime.

2035

2062

27

Slate.

2062

2066

4

Sand.

2066

2091

25

Big Lime.

2091

2231

140

Big Injun.

2231

2258

27

Steel Line.

Slate.

2258

2273

15

Total depth.

2273'

Steel Line.

3