

0 1 2 3 Latitude 38 50

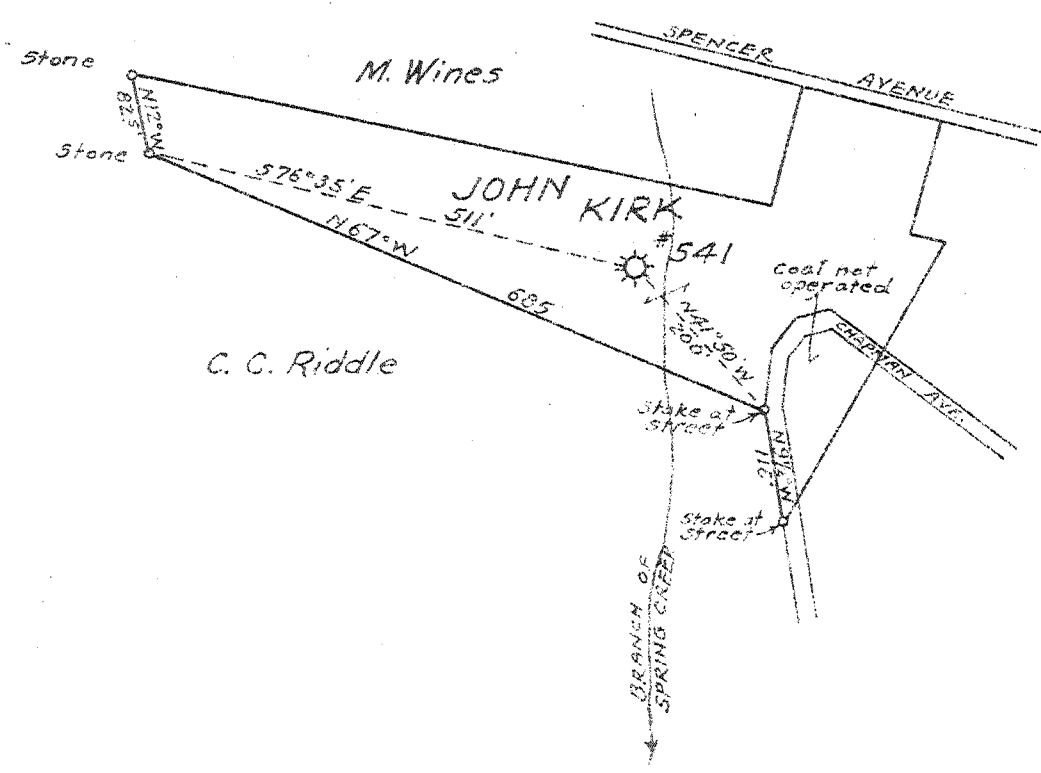
1

2

3

Longitude 81 20

+ 1.965
1.40 W



New Location
 Drill Deeper
 Abandonment X

Company UNITED FUEL GAS CO.
 Address CHARLESTON, W.VA.
 Farm JOHN KIRK
 Tract Acres 5 Lease No. 8277
 Well (Farm) No. 1 Serial No. 541
 Elevation (Spirit Level) 802
 Quadrangle SPENCER
 County ROANE District SPENCER CORR.
 Engineer M. W. Manningham
 Engineer's Registration No. 659
 File No. 76-89 Drawing No. _____
 Date MAY 5, 1944 Scale 1"=200'

STATE OF WEST VIRGINIA
 DEPARTMENT OF MINES
 OIL AND GAS DIVISION
 CHARLESTON

WELL LOCATION MAP
 FILE NO. ROA-378-A

+ Denotes location of well on United States Topographic Maps, scale 1 to 62,500, latitude and longitude lines being represented by border lines as shown.

- Denotes one inch spaces on border line of original tracing.