

Latitude

38° 37' 30"

81° 07' 30"

Longitude

7/2 loc 20347

Topo Location

7.5' Loc. 2.25 S 15' Loc. 5.13 S
0.51 W (calc.) 2.76 W

Company _____

Farm John Smith 4

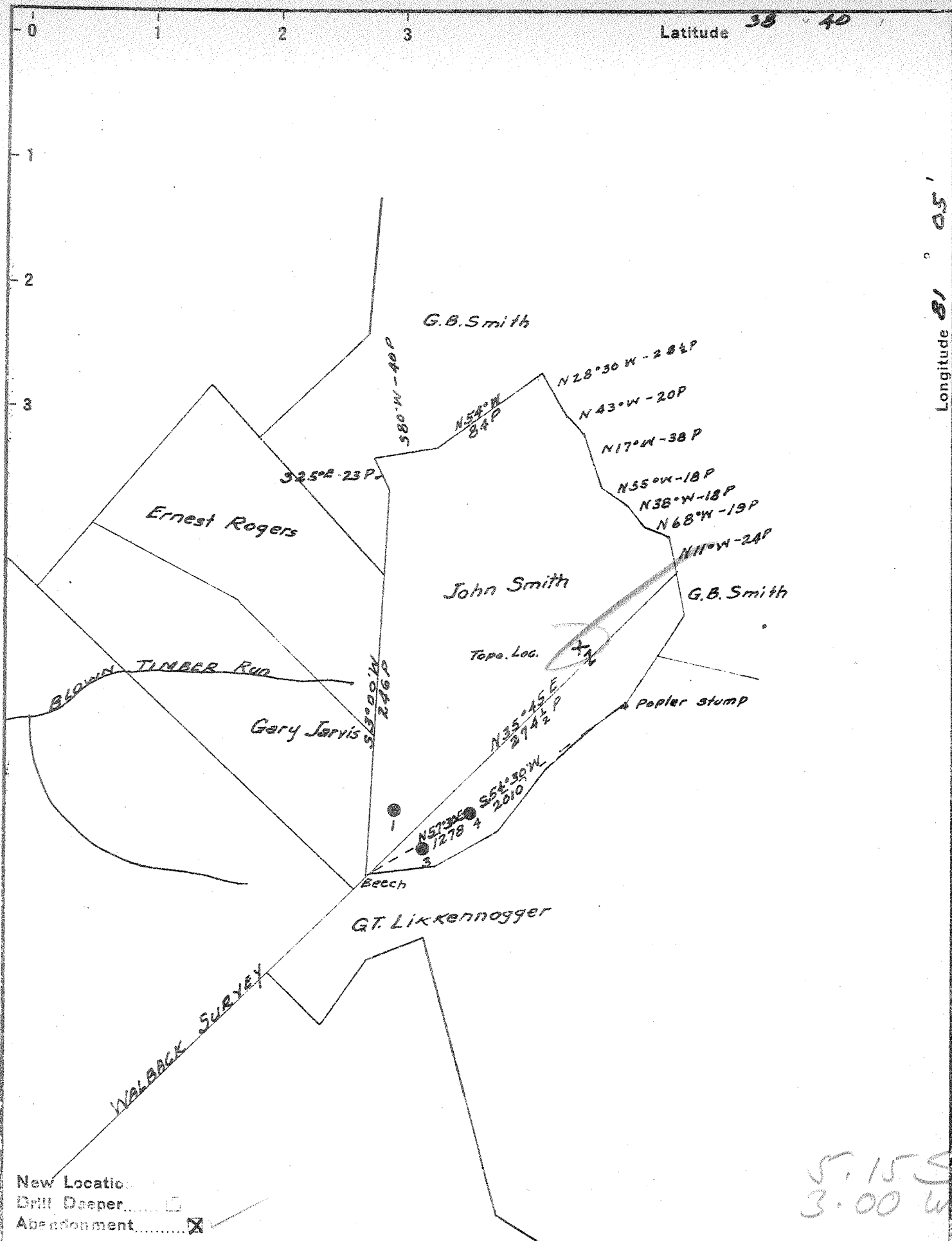
15' Quad Otter
(sec.)

7.5' Quad Newton

District _____

WELL LOCATION PLAT

County 87 Permit 20347



New Location
 Drill Deeper
 Abandonment

5.15 S
 3.00 W

| | | | |
|-----------------------------|---------------------------------|------------|------------|
| Company | GODFREY L CAROT INC | | |
| Address | 300 Union Bldg, Charleston W Va | | |
| Farm | JOHN SMITH | | |
| Tract | Acres | Lease No. | |
| | 83 | 3-8 | |
| Well (Farm) No. | 4 | Serial No. | 680 |
| Elevation (Spirit Level) | 1150 | | |
| Quadrangle | OTTER | | |
| County | District | | |
| ROANE | GEARY | | |
| Engineer | Ray Boston | | |
| Engineer's Registration No. | | | |
| File No. | Drawing No. | | |
| Date | 12-20-42 | Scale | 1" = 1320' |

STATE OF WEST VIRGINIA
 DEPARTMENT OF MINES
 OIL AND GAS DIVISION
 CHARLESTON

WELL LOCATION MAP
 FILE NO. Roa-347-A

+ Denotes location of well on United States Topographic Maps, scale 1 to 62,500, latitude and longitude lines being represented by border lines as shown.
 - Denotes one inch spaces on border line of original tracing.