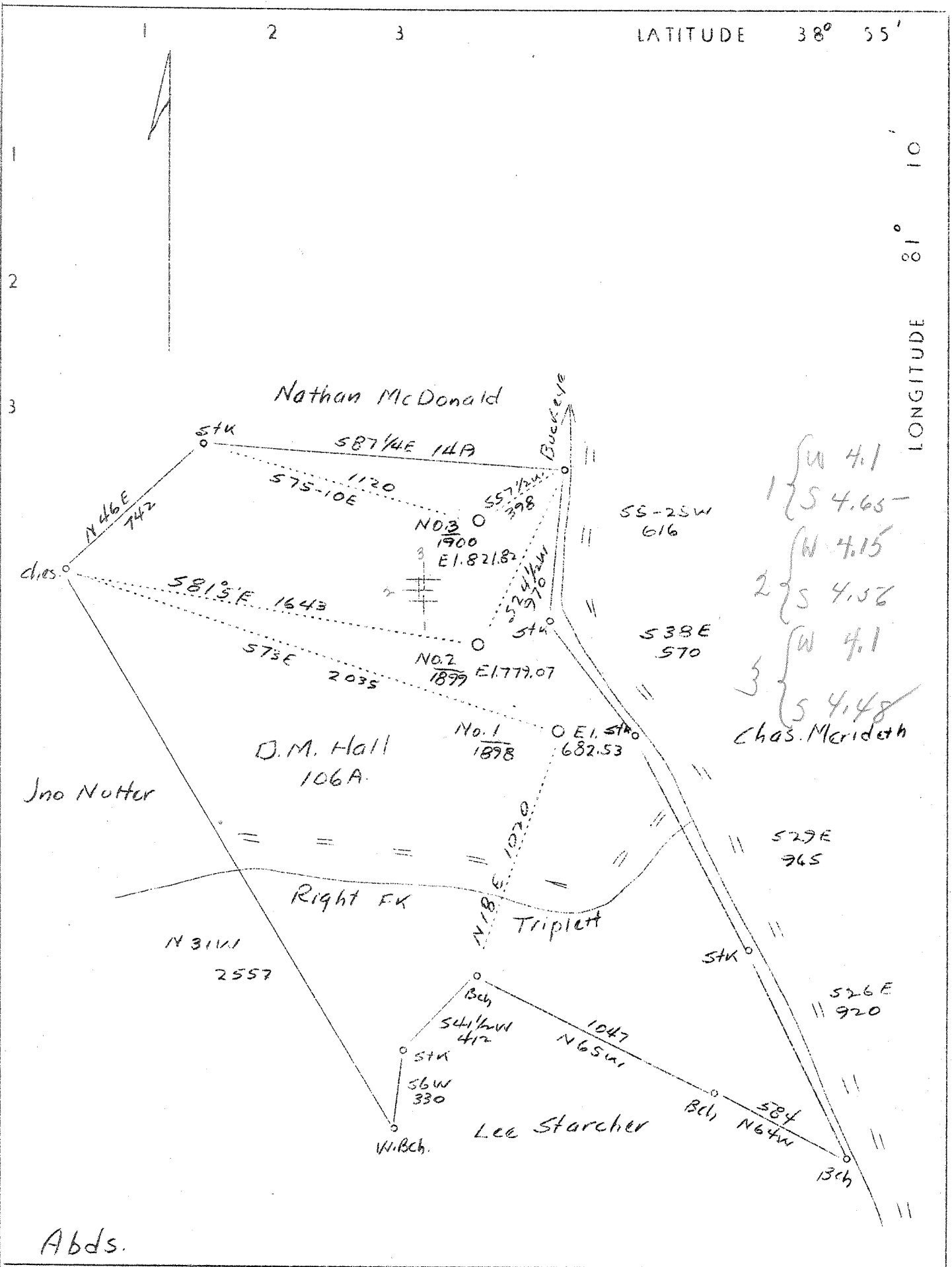


LATITUDE 38° 55'

LONGITUDE 81° 10'



Abds.

Company	Leroy Cassidy
Address	Triplett, W. Va.
Farm	D. M. Hall
Acres	106
Well (Farm) No.	1, 2 and 3
Serial No.	1898, 1899 and 1900
Elevation (SL)	682.53, 779.07 and 821.84
Quadrangle	Arnoldsburg W.C.
County	Roane
District	Spencer
Engineer	L. F. Dye
Eng. Reg. No.	804
Date	Sept. 21, 1939
Scale	1" = 500'

STATE OF WEST VIRGINIA
 Department of Mines
 OIL & GAS DIVISION
 Charleston

See microfilm for well records (Hard to read)

WELL LOCATION MAP

File No. ROA-253-254-255A

1898 1899 1900

x Denotes location of well on U. S. Topographic Maps, scale 1 to 62,500, latitude and longitude lines being represented by border lines as shown.

- - Denotes one inch spaces on border line of original tracing.