

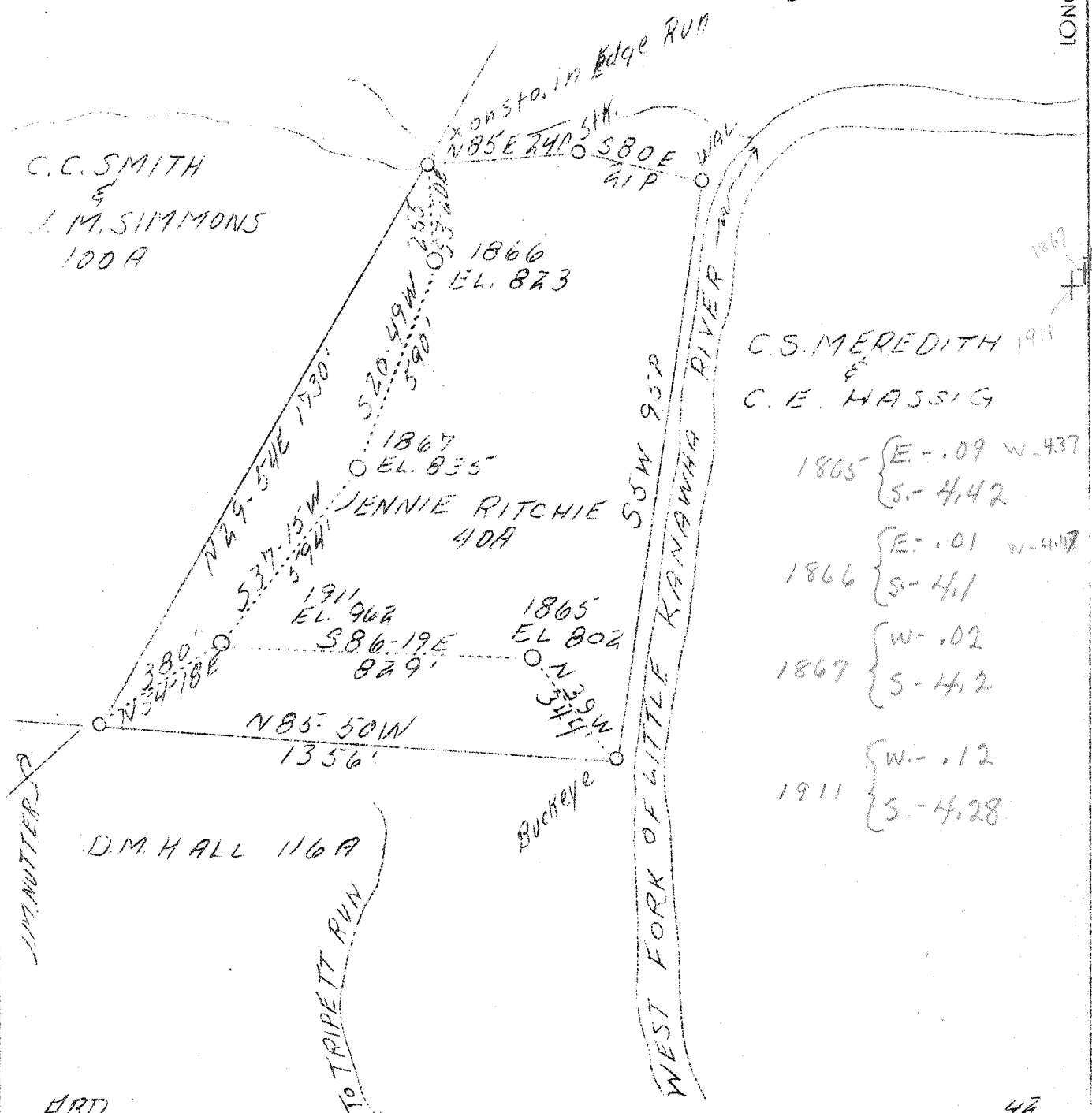
LATITUDE 38° 55'

JANE BLOSSER

T. J. HICKLE  
30A

NATHAN M. McDONALD  
103A

LONGITUDE 81° 15'



- 1865 { E-.09 W-.437
- { S-.442
- 1866 { E-.01 W-.447
- { S-.41
- 1867 { W-.02
- { S-.412
- 1911 { W-.12
- { S-.428

ABD.

F.B. 661 P 30 540 W 66 SH 47/52

Company	Hope Constr. & Ref. Co.	STATE OF WEST VIRGINIA
Address	Clarksburg, W. Va.	Department of Mines
Farm	Jennie Ritchie	OIL AND GAS DIVISION
Tract	1	Charleston
Acres	40	Well record on microfiche (hard to read)
Serial No.	1865, 1866, 1867, & 1911	WELL LOCATION MAP
Quadrangle	Spencer E1	File No. <u>P.O. 2467-85250-A</u>
County	Roane	Well # 1865-1866-1867 & 1911
District	Spencer	x Denotes location of well on U.S. Topographic Maps, scale 1 to 62,500, latitude and longitude lines being represented by border lines as shown.
Eng.	W.M. Bowers	- Denotes one inch spaces on border line of original tracing.
Eng. Reg. No.	900	
Date	8/29/39	
Scale	1" = 400'	